

FOR SALE



Archdale Close , Chesterfield
Offers In Excess Of £155,000


MARTIN&CO



Archdale Close , Chesterfield

3 Bedrooms, 1 Bathroom

Offers In Excess Of £155,000

- No Chain
- Large enclosed garden
- Beautifully presented
- Off street parking
- Cul-de-sac location

Now available to view is this spacious semi-detached property. With vacant possession and no chain it's ready to move straight in.

Upstairs are two large double rooms and one good sized single, landing with storage cupboard and a modern bathroom suite. Beautifully presented, the property has been fully redecorated and re carpeted throughout, giving it a fresh feel. Downstairs you will find a second WC and a spacious lounge, which leads into the large kitchen diner with storage cupboard. French doors lead out into the fabulous garden space. Fully enclosed and much larger than the average property in the area, making it an ideal family home.

The property is situated on a quiet cul-de-sac on Archdale Close, only a few minutes walk from the local shops, entertainment complex and is conveniently also walking distance into Chesterfield Town Centre

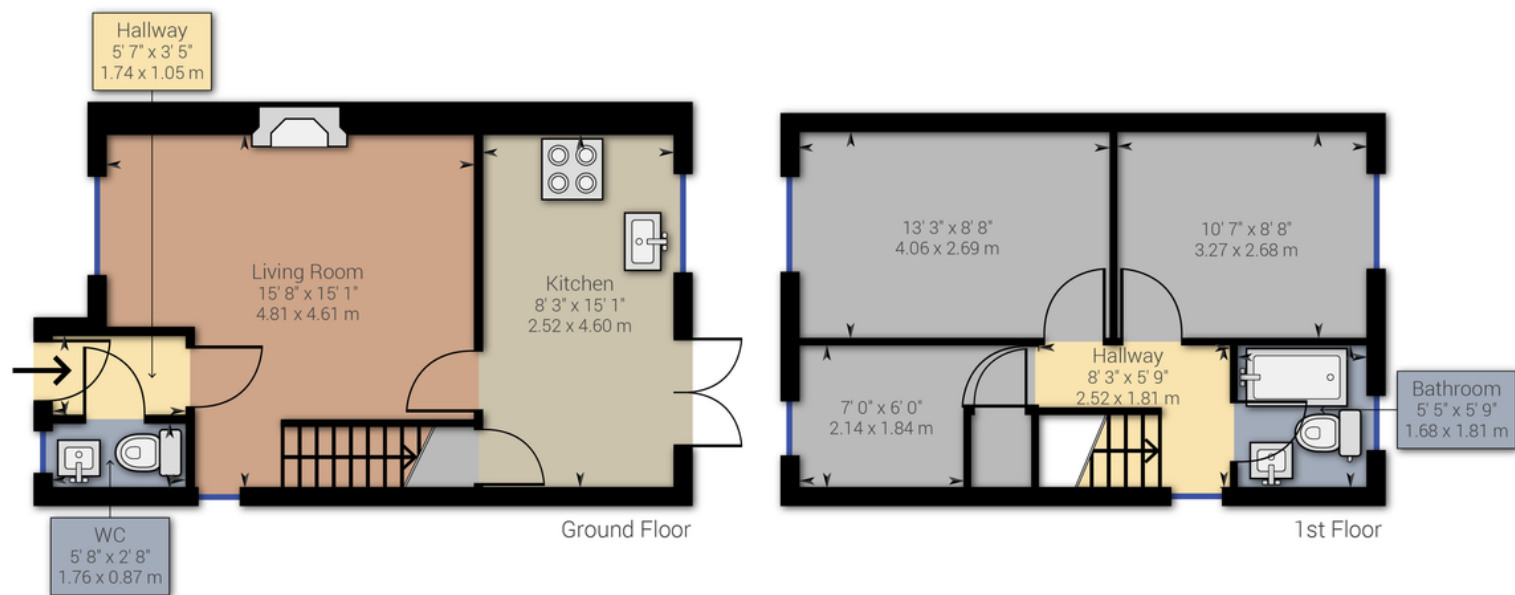






%epcGraph_c_1_544%





Approximate net internal area: 718.08 ft² / 66.71 m²

Martin & Co Chesterfield

77 Low Pavement • • Chesterfield • S40 1PB

T: 01246 220160 • E:

01246 220160

<http://www.martinco.com>

MARTIN&CO

Accuracy: References to the Tenure of a Property are based on information supplied by the Seller. The Agent has not had sight of the title documents. A Buyer is advised to obtain verification from their Solicitor. Items shown in photographs including but not limited to carpets, fixtures and fittings are not included unless specifically mentioned within the sales particulars. They may however be available by separate negotiation. Buyers must check the availability of any property and make an appointment to view before embarking on any journey to see a property. No person in the employment of the agent has any authority to make any representation about the property, and accordingly any information given is entirely without responsibility on the part of the agents, sellers(s) or lessors(s). Any property particulars are not an offer or contract, nor form part of one. **Sonic / Laser Tape:** Measurements taken using a sonic / laser tape measure may be subject to a small margin of error. **All Measurements:** All Measurements are Approximate. **Services Not tested:** The Agent has not tested any apparatus, equipment, fixtures and fittings or services and so cannot verify that they are in working order or fit for the purpose. A Buyer is advised to obtain verification from their Solicitor or Surveyor. **Mortgage & Financial Advice:** The Martin & Co mortgage service is provided by London & Country Mortgages the UK's largest Independent Fee-Free mortgage broker of Beazer House, Lower Bristol Road, Bath, BA2 3BA. Authorised and regulated by the Financial Conduct Authority. Their FCA number is 143002. **YOUR HOME IS AT RISK IF YOU DO NOT KEEP UP REPAYMENTS ON A MORTGAGE OR OTHER LOANS SECURED ON IT.** Full written quotation available on request. A suitable life policy may be required. Loans subject to status. Minimum age 18. If you are making a cash offer, we shall require written confirmation of the source and availability of your funds in order that our client may make an informed decision