



3, Hereford Road, Maidstone, ME15 7NE  
£310,000

## About this property.....

This good sized semi detached home offers 3 double bedrooms and lots of space for a growing family. The kitchen has a real wow factor and has a breakfast bar area ideal for grabbing a bite to eat. Leading off of the kitchen is the utility room. There is an attractive rear garden and ample parking at the front on the driveway. The property is ideally situated for the nearby Molehill Academy and Oaks Primary Academy, both rated as Good in the last Ofsted inspection. Call us now to arrange your viewing.

## Situation.....

Maidstone is the County town of Kent and as such boasts extensive retail, entertainment and leisure facilities in addition to numerous state and grammar educational establishments. The town has mainline train links via Maidstone East train station giving journey times to London of just over 1 hour. The town has links to junctions 5, 6 and 7 of the M20 providing road access to London



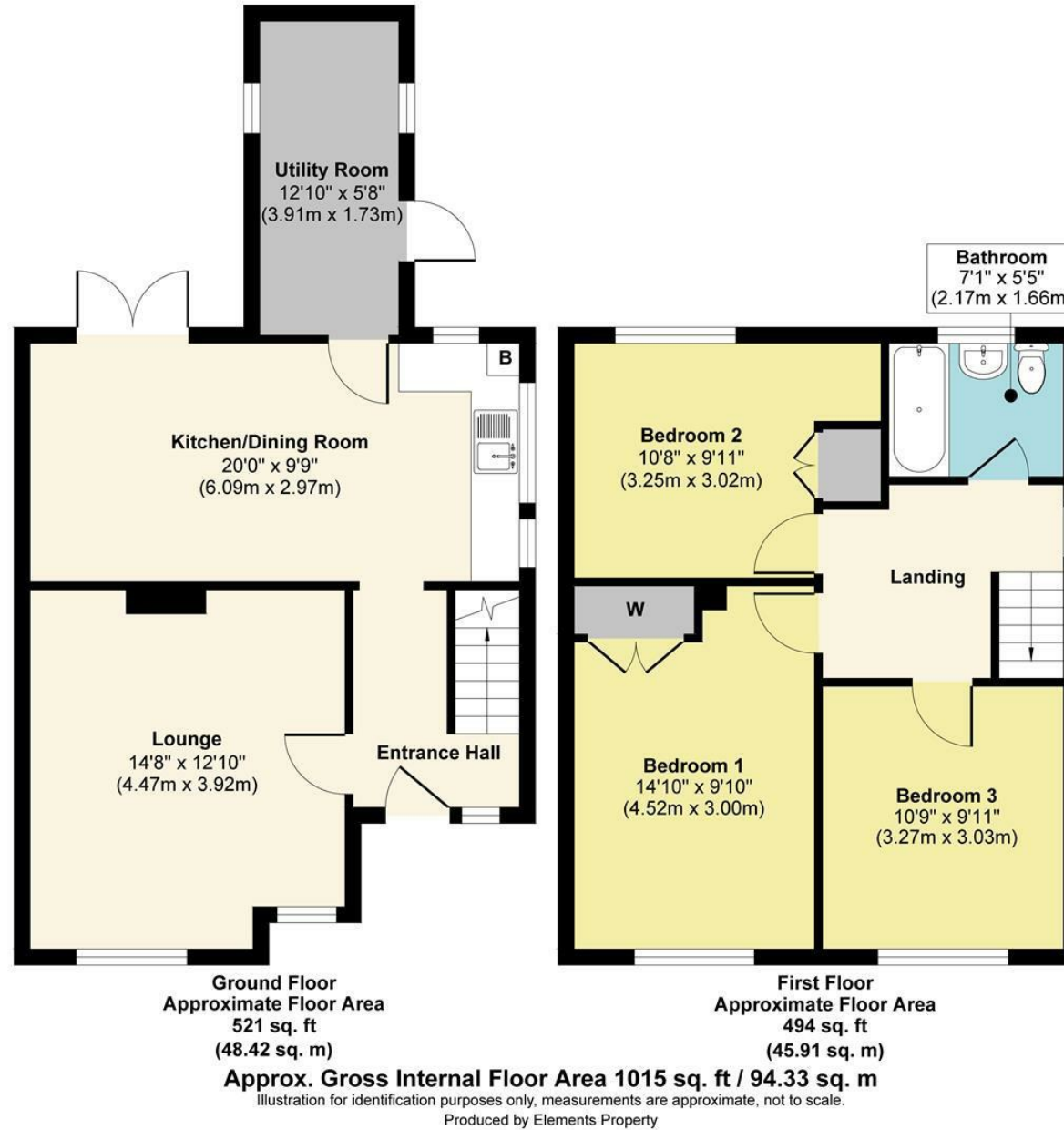






Useful Information.....

# 3, Hereford Road, Maidstone, ME15 7NE



## Agents Notes

Floor plans produced for illustrative purposes only. The position and sizes of doors, windows, rooms and other items are approximate and no responsibility is taken for any error, omission or mis-statement. These particulars are produced for information only and do not form part of any contract. The agent has not had sight of any title documents. Fixtures, fittings and services not tested.

