



130 Sunbridge Road, Bradford

£450 PCM

Step inside this modern 2-bedroom, 1-bathroom apartment at Airedale House. This imposing building is home to a range of beautiful apartments with an impeccable finish.

The open-plan lounge, dining area and kitchen are spacious and offer the perfect entertaining space. In the kitchen you'll find sleek modern cabinets with integrated oven/hub and stainless-steel extractor fan.

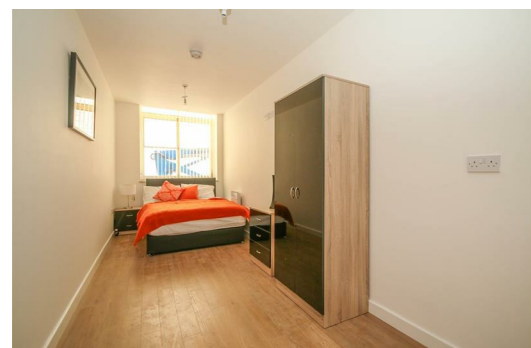
You'll also find wood flooring throughout for easy maintenance.

The bedrooms are spacious with plenty of natural light and the bathroom is lovely and neutral.

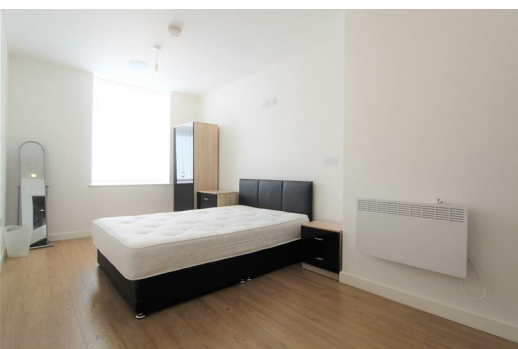
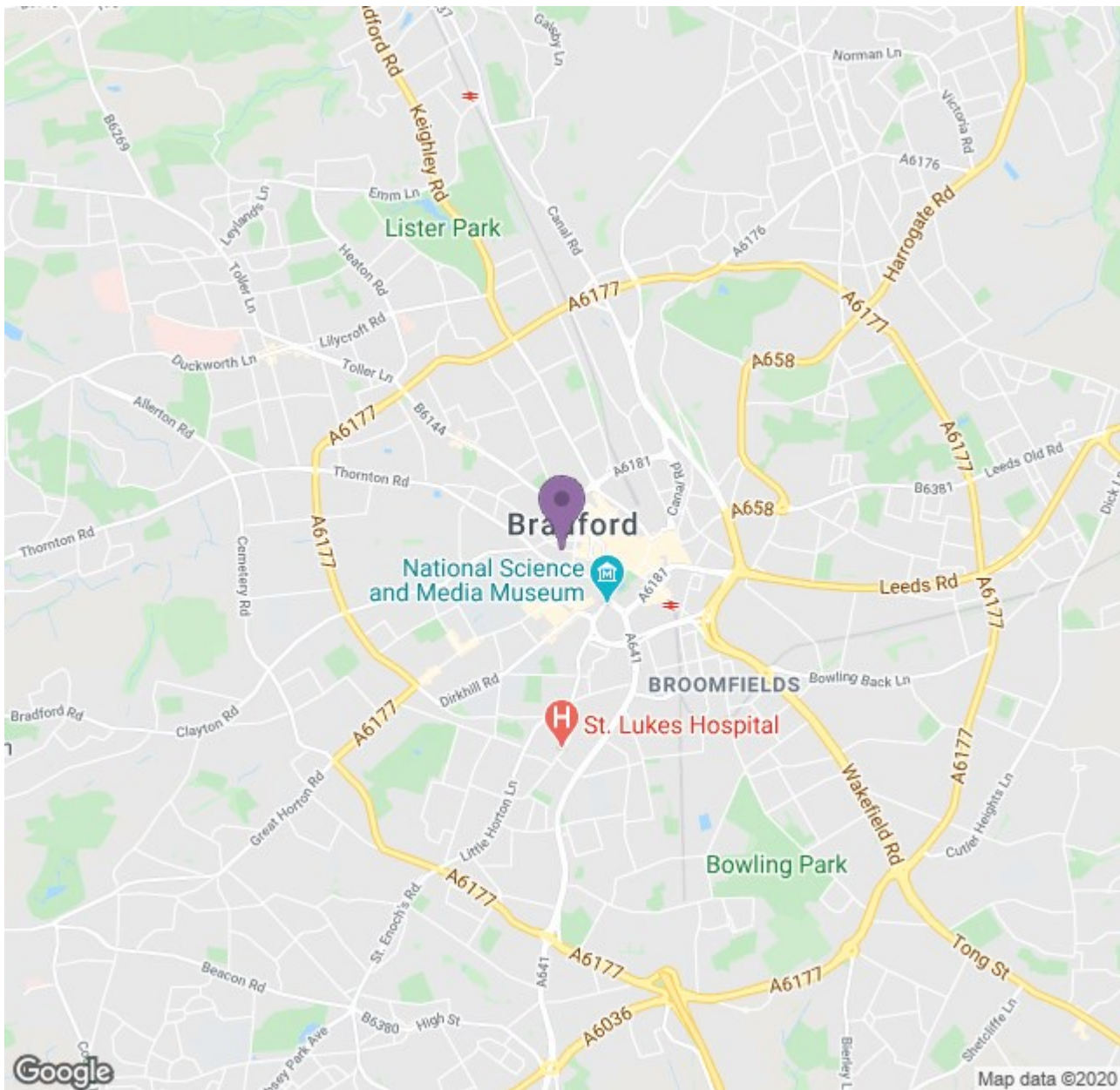
Outside you'll find Kirkgate Shopping Centre a 5-minute walk away, along with McDonald's, several banks and a cheeky Nando's. There's a wide range of amenities, bars and restaurants in the immediate area which makes this location spot on for those who want to be within the thick of all the action.

This apartment won't be on the market for long. Contact us today to book your viewing.

Available 20th October 2020







Energy Efficiency Rating		Current	Target
Energy Efficiency Rating	Current	81	81
Energy Efficiency Rating	Target	81	81
Energy Efficiency Rating	Target	81	81
Energy Efficiency Rating	Target	81	81
Energy Efficiency Rating	Target	81	81
Energy Efficiency Rating	Target	81	81
Energy Efficiency Rating	Target	81	81
Energy Efficiency Rating	Target	81	81
Energy Efficiency Rating	Target	81	81
Energy Efficiency Rating	Target	81	81

Environmental Impact (CO <sub>2</sub> ) Rating		Current	Target
Environmental Impact (CO <sub>2</sub> ) Rating	Current	65	68
Environmental Impact (CO <sub>2</sub> ) Rating	Target	65	68
Environmental Impact (CO <sub>2</sub> ) Rating	Target	65	68
Environmental Impact (CO <sub>2</sub> ) Rating	Target	65	68
Environmental Impact (CO <sub>2</sub> ) Rating	Target	65	68
Environmental Impact (CO <sub>2</sub> ) Rating	Target	65	68
Environmental Impact (CO <sub>2</sub> ) Rating	Target	65	68
Environmental Impact (CO <sub>2</sub> ) Rating	Target	65	68
Environmental Impact (CO <sub>2</sub> ) Rating	Target	65	68
Environmental Impact (CO <sub>2</sub> ) Rating	Target	65	68