

LONGTON ROAD

THE GABLES

TRENTHAM



WELCOME

This Tudor style town house located in the sought after residential area of Trentham is beautifully shielded from the road and boasts generous, flexible and well laid out living space.

The hidden gem of a home is tailored to meet the demands of a larger family seeking a stylish and spacious home and those who love to entertain and comfortably accommodate guests.





A delightful fusion of traditional character and contemporary decor have resulted in a light and airy interior which has been finished to extremely high standards. The property's most desirable features include; deep skirting boards, corniced ceilings and stripped wooden internal doors.

The impressive reception hall with its Minton tiled flooring gives a taste of things to come so let's follow the aroma of fresh coffee into the spectacular kitchen/breakfast room with plenty of space for a dining table and American style fridge freezer.

A range style cooker takes centre stage beneath mood lighting in an impressive brick inglenook whilst a Belfast sink is nestled between a myriad of timeless charcoal units topped by ivory work surfaces.

With a larger than average and well fitted out utility room, the laundry is easily taken care of and the kitchen remains clutter free.





The jewel in the crown of this delightful family residence is undisputedly the industrial chic themed entertainment room/ bar which has easy access to the alfresco hot tub and features an ornate wrought iron staircase. (Leading to sleeping space on the mezzanine floor.) The ground floor WC is located conveniently close.

Family movie nights are a must in the comfortable sitting room with its spectacular cast iron period fireplace and generous bay window.

The lavish lounge offers plenty of space for squishy sofas and boasts an ornate Victorian fireplace. The lounge area extends into a spacious gable conservatory offering the perfect spot for formal dining and elaborate entertaining.

Step out into the secluded rear courtyard with its Indian stone floor and plethora of comfortable outdoor living space and imagine the joy of soaking away the strains of the day in the gazebo covered hot tub.

Back indoors it's time to head up the statement staircase to the elegant first floor landing and be wowed by three generous bedrooms and an exquisite family bathroom.

The gorgeous master bedroom boasts an impressive feature fireplace with charming alcoves either side and gleaming wooden floorboards.

Bedroom two is an impressive size and the third smaller bedroom offers adequate space for a double bed.

The delightfully divided dolphin grey family bathroom features a claw footed bath with shower mixer taps plus an independent glass walled shower enclosure in one section of the room whilst the toilet area with its modern pedestal wash basin enjoys its own dedicated space.



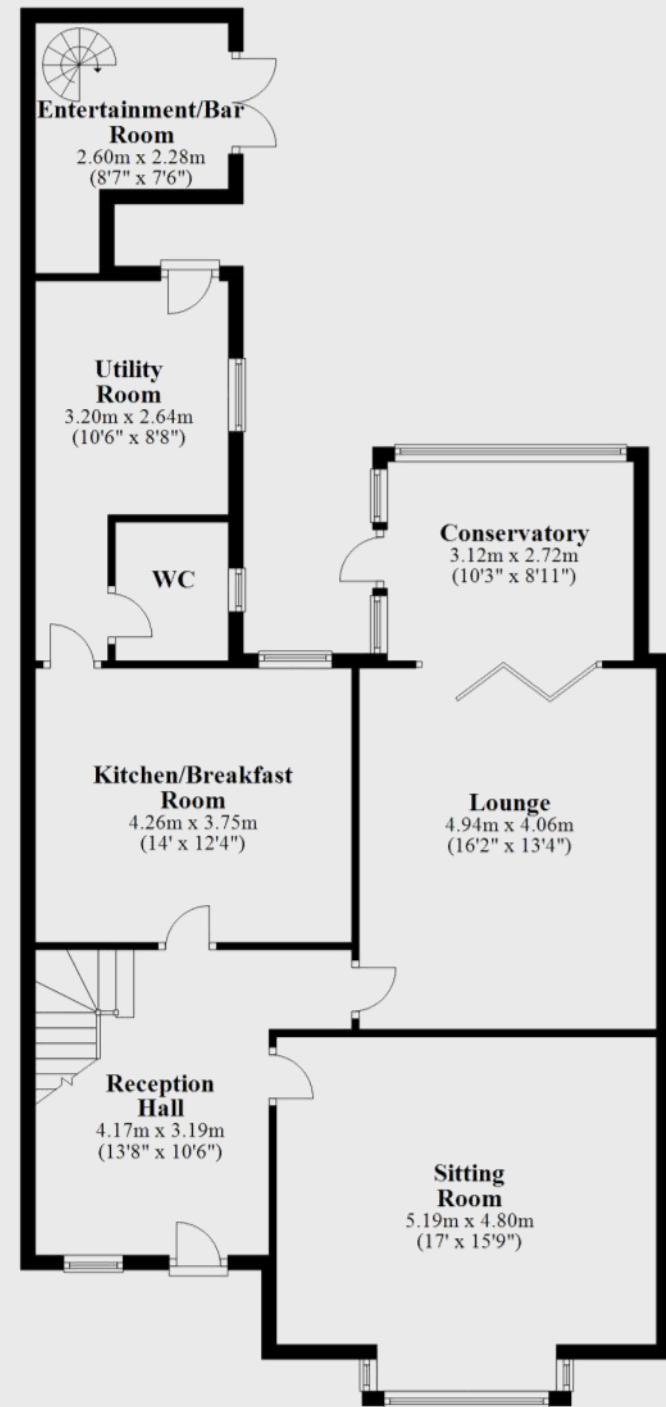


On the second floor are three further quirky and characterful bedrooms. With pride of place beneath the eaves the second floor bedrooms are bursting with personality created by their delightful nooks and crannies.

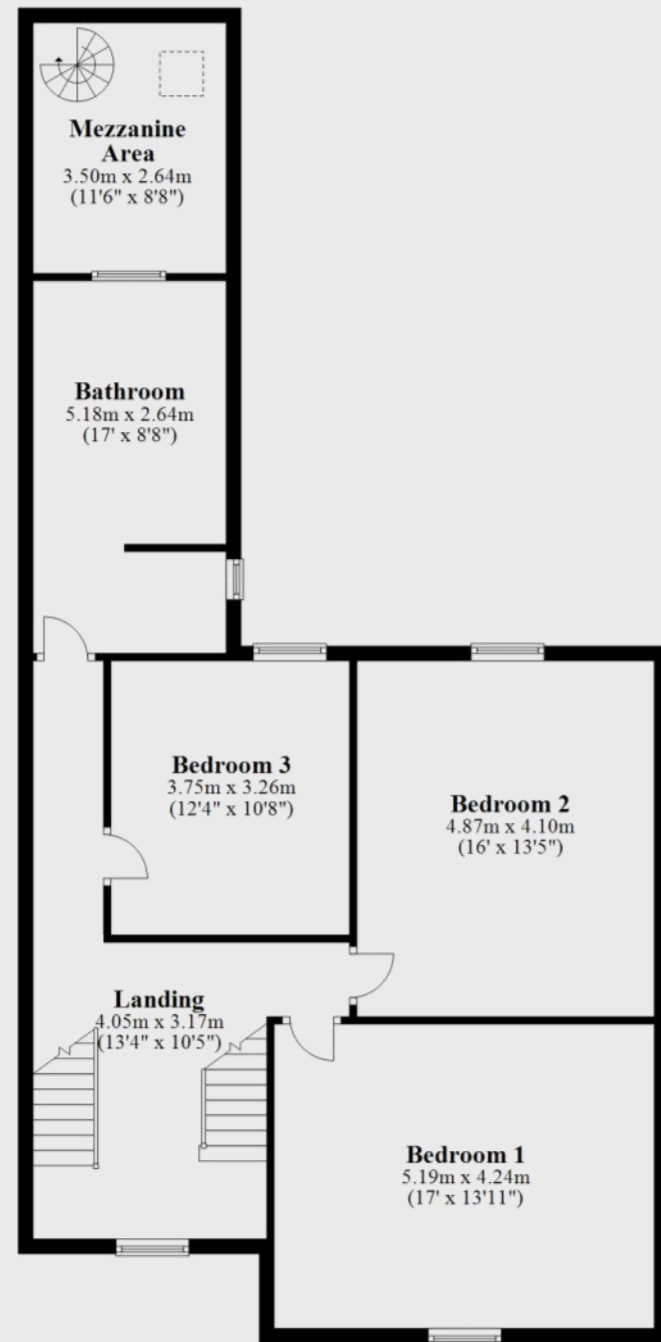
A modern geometric themed bathroom with claw footed bath and shower over plus vanity unit and toilet serve the second floor bedrooms.

Parking is provided at the rear of the property by a double detached garage plus allocated space for two cars.

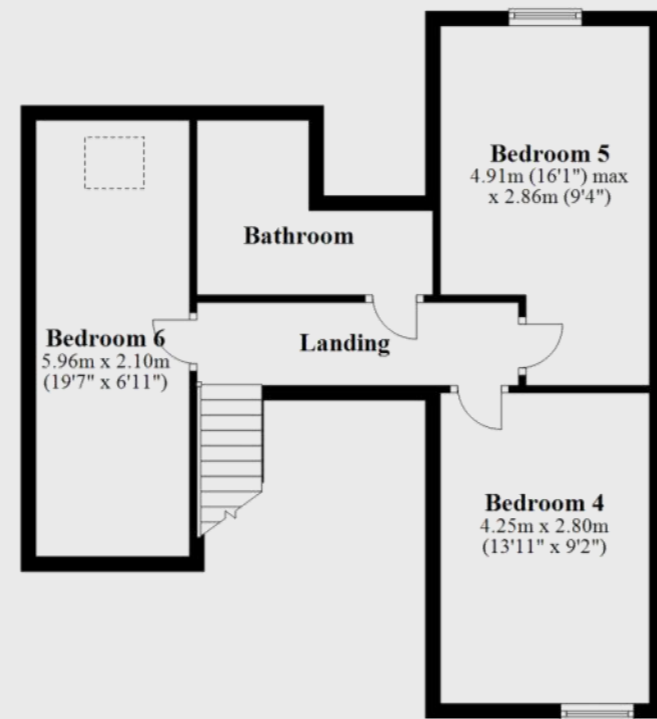
Ground Floor



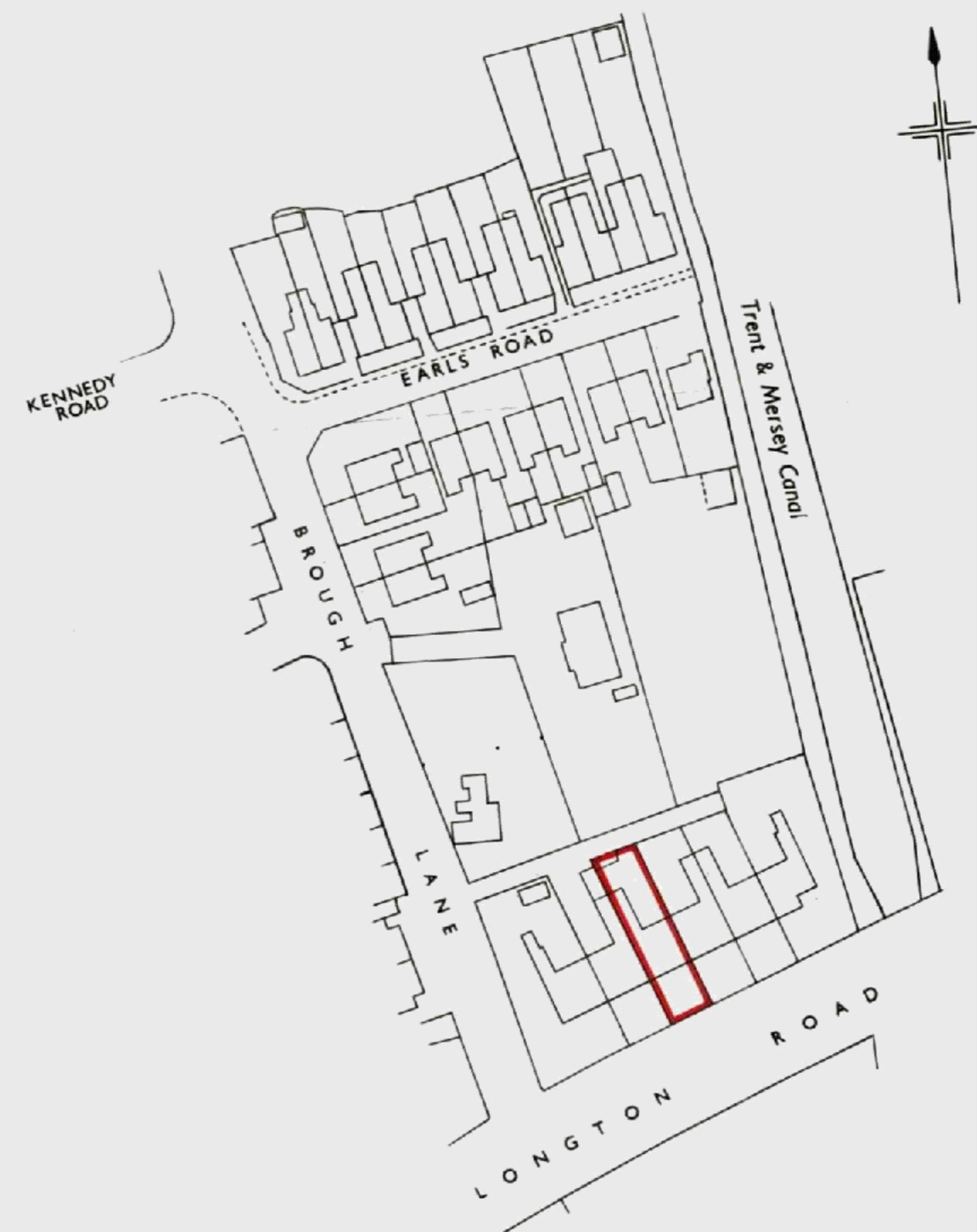
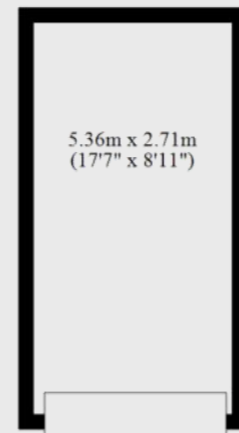
First Floor



Second Floor



Garage





Contact Becky for more information

01538 493333

sales@addisonmead.co.uk

Addison Mead

— EXCLUSIVE —