

Unique Apartment in Iconic Building on Canalside Location

Gasholders, Kings Cross, N1

Available 14 March - £775 per week* (£3,358.33 pcm)

*Additional fees may apply

Gasholders, Lewis Cubitt Square, Kings Cross, N1

£775 per week Unfurnished*

*Additional fees may apply

- Reception room with balcony
- Open plan kitchen
- Master bedroom with built in storage
- Bathroom
- Balcony
- Communal facilities include:
 - Roof Terrace
 - Swimming pool, spa and gym
 - Private dining room and catering kitchen
 - Private screening cinema room
 - Games room
- Mains water/sewerage/electric/gas
- Gas central heating

This very impressive, distinctive one bedroom apartment is set on the fourth floor and forms part of the iconic Gasholders Building in Kings Cross. The apartment benefits from breathtaking communal roof gardens, sophisticated entertaining suite comprising private dining room and catering kitchen, 14 person screening room and games room. Gasholders' Spa is open daily from 6am till 10pm and includes residents gym, swimming pool and relaxing space. With its canal side, urban location, Gasholders is perfectly located for easy access to local, national and international transport links and shopping amenities.

- Available Immediately - Furnished or Unfurnished
- Camden Council Tax Band: E £2,457.37 PA
- EPC Rating: 85/B
- Approx. Gross Internal Area: 644 Sq Ft
- Security Deposit: £3,875 (5 wks rent)
- Holding Deposit: £775 (1 wks rent)



Gasholders, Kings Cross, N1

Available 14 March - £775 per week* (£3,358.33 pcm)

*Additional fees may apply

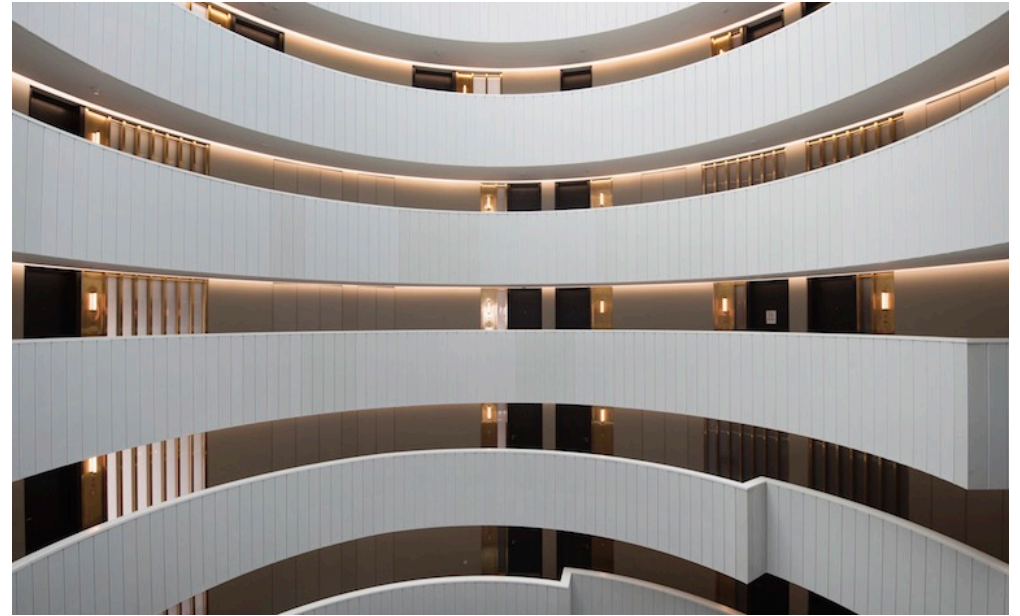


Unique Apartment in Iconic Building on Canalside Location

Gasholders, Kings Cross, N1

Available 14 March - £775 per week* (£3,358.33 pcm)

*Additional fees may apply



Unique Apartment in Iconic Building on Canalside Location

Gasholders, Kings Cross, N1

Available 14 March - £775 per week* (£3,358.33 pcm)

*Additional fees may apply



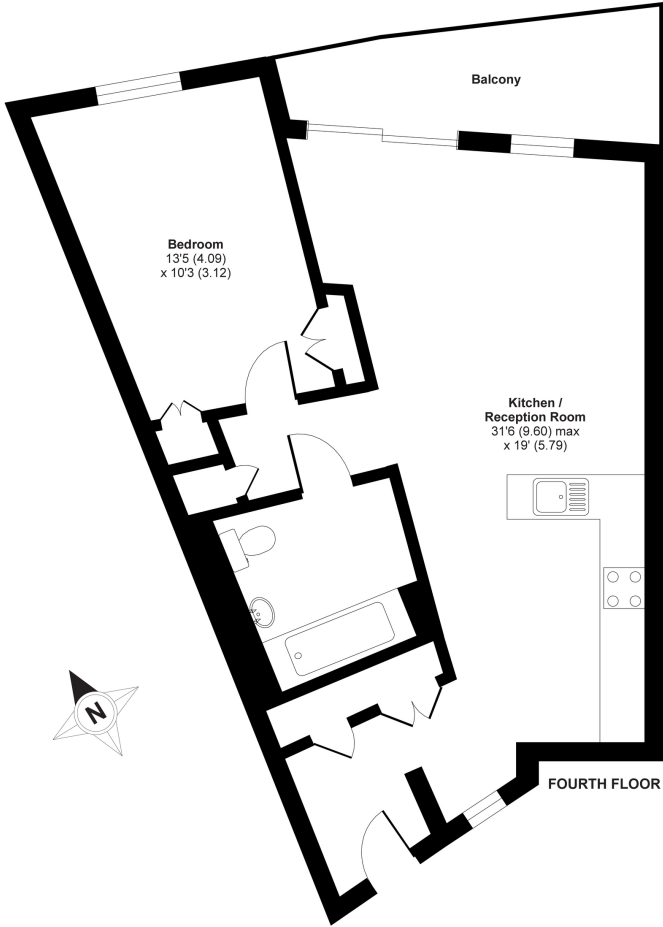
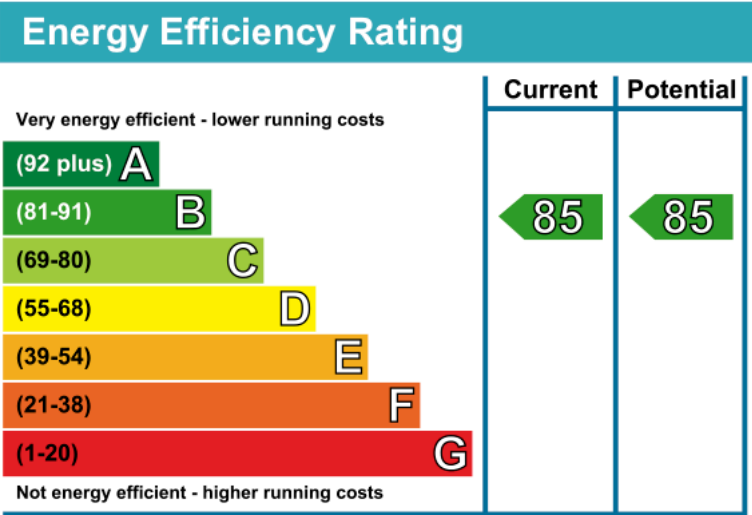
Unique Apartment in Iconic Building on Canalside Location

Gasholders, Kings Cross, N1

Available 14 March - £775 per week* (£3,358.33 pcm)

*Additional fees apply

Approx Gross Internal Area: **644 Sq Ft / 59.8 Sq M**



Whilst every attempt has been made to ensure the accuracy of the floor plan contained here, measurements of doors, windows and rooms are approximate and no responsibility is taken for any error, omission or misstatement. These plans are for representation purposes only as defined by RICS Code of Measuring Practice and should be used as such by any prospective purchaser. Specifically no guarantee is given on the total square footage of the property if quoted on this plan. Any figure given is for initial guidance only and should not be relied on as a basis of valuation.

Copyright nichecom.co.uk 2018 Produced for Stella Lange LLP REF : 391927

* A holding deposit of 1 weeks rent will be offset against the initial rental payment. The necessary paperwork should be completed within 15 days or such longer period as might be agreed. A security deposit equivalent to 5 weeks rent to be held during the tenancy against unpaid rent, bills, dilapidations and any other costs or losses incurred. Contract variations £50, Change of sharer £50, all inclusive of VAT at the prevailing rate.

Please note that the above measurements are approximate only. Any internal photographs are intended as a guide only and it should not be assumed that any of the furniture is included