



PERIOD
HOMES



Waterhouse Street
Chelmsford Essex CM1 2TY
£375,000

Waterhouse Street, Chelmsford, Essex CM1 2TY

Located in a convenient position in a no through road, within just 20 minutes' walk from Chelmsford Railway Station and city centre, is this older style three bedroom end of terrace house. The property offers well-planned accommodation with the advantage of a large rear garden and garage.

To the ground floor is an entrance hall with stairs rising to the first floor. A door leads to the bright triple aspect lounge/dining room with exposed floorboards, underfloor heating and a built-in under stairs storage cupboard. To the rear is the kitchen, comprehensively fitted in a range of cool white units and matching onyx style worktops incorporating a breakfast bar, integrated appliances and a tiled floor. A door leads out to the rear garden and a door gives access to the ground floor cloakroom.

To the first floor is a long landing with access to the loft area. The master bedroom is situated to the front of the house with exposed floor boards. The second double bedroom overlooks the garden and the third bedroom, located to the rear also overlooks the garden and could be used as a home office if required. The family bathroom is fitted with a white suite and includes fitted storage cupboards.

The front garden is block paved and retained by railings with a gate to the entrance. The rear garden extends to around 80 feet in depth and commences with a sundial effect patio, extensive lawns and a garden deck to the rear where there is a garden office with power & light connected. There is a door to the large pre-cast garage accessed via a service road to the rear.



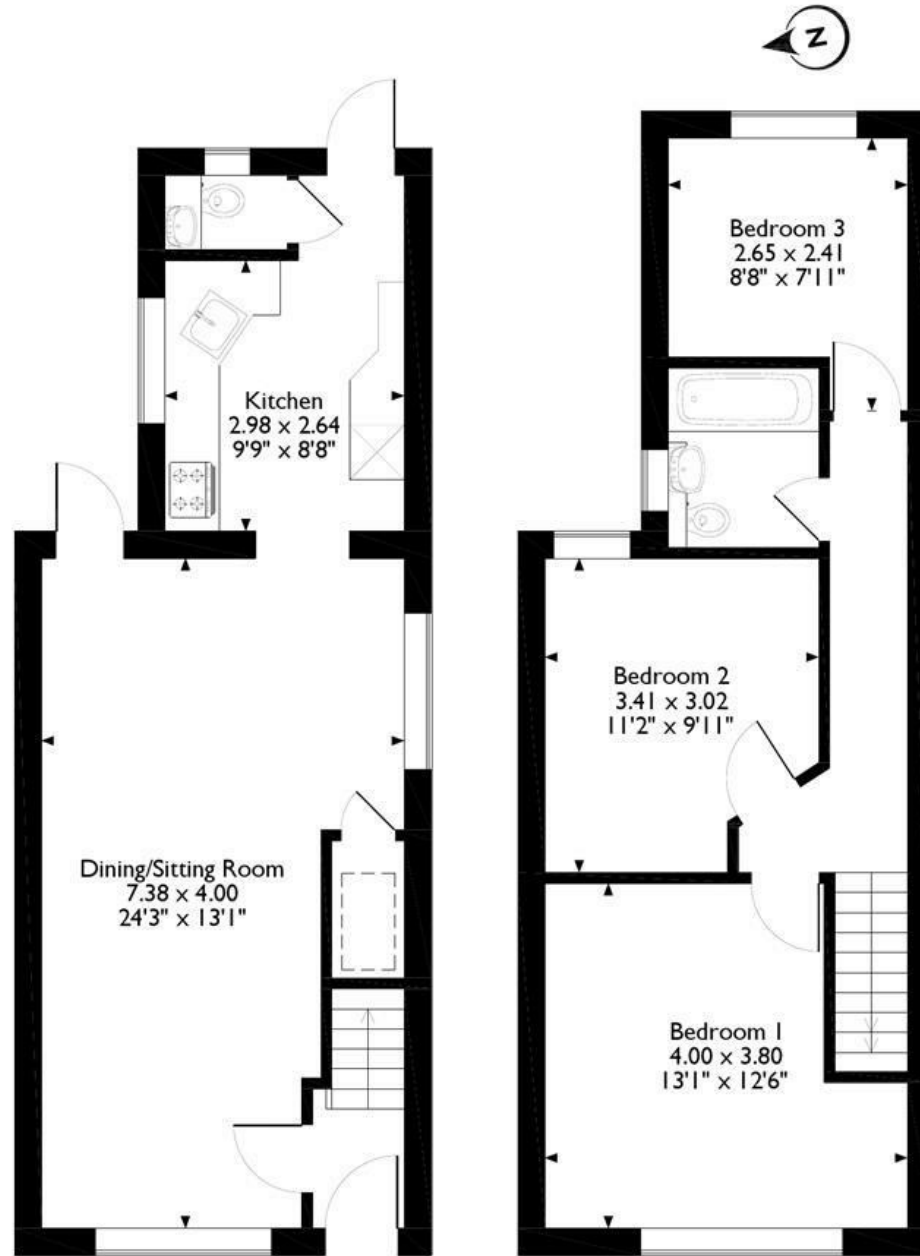


ENTRANCE HALL
SITTING / DINING ROOM
24'2" x 13'1" (7.38m x 4.00m)
KITCHEN
9'9" x 8'7" (2.98m x 2.64m)
FIRST FLOOR LANDING
BEDROOM ONE
13'1" x 12'5" (4.00m x 3.80m)
BEDROOM TWO
11'2" x 9'10" (3.41m x 3.02m)
BEDROOM THREE
8'8" x 7'10" (2.65m x 2.41m)
BATHROOM
REAR GARDEN





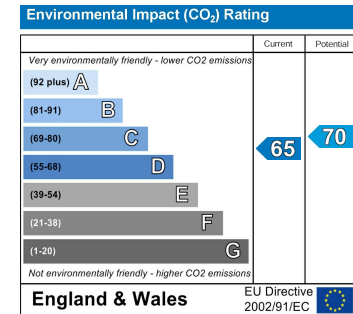
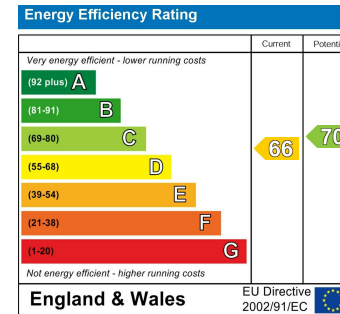
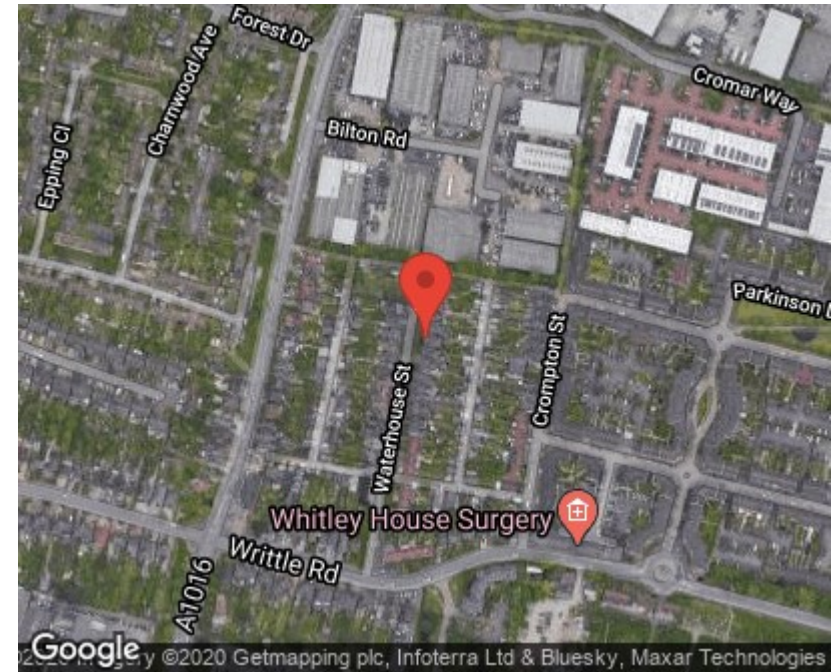
Waterhouse Street, Chelmsford, Essex
Approximate Gross Internal Area
83 Sq M/887 Sq Ft



Ground Floor

First Floor

Please note that the location of doors, windows and other items are approximate and this floorplan is to be used for illustrative purposes only. Unauthorized reproduction is prohibited.



PLEASE CALL 01277 288000 TO ARRANGE A VIEWING
www.periodhomes.co.uk

INDEPENDENT ESTATE AGENTS - VALUATIONS WITH NO OBLIGATION - PROFESSIONAL SERVICE

These particulars do not constitute any part of an offer or contract. All measurements are given as a guide, no liability can be accepted for any errors arising therefrom. No responsibility is taken for any other error, omission, or mis-statement in these particulars. Period Homes, a trading style of Walkers Village and Country Homes Limited do not make or give, whether in these particulars, during negotiations or otherwise, any representation whatsoever in relation to this property.

