

15 Maitland Avenue, Chorlton, M21 7ND



JP&Brimelow
SALES

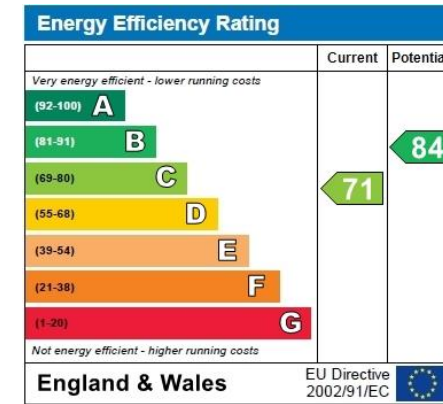
Price: £325,000

****VIDEO TOUR AVAILABLE**** A well-presented & tastefully extended, **FOUR BEDROOMED**, bay fronted, traditional semi-detached property situated on a highly popular residential road off Barlow Moor Road here in Chorlton. Nearby to Chorlton Water Park, Chorlton Golf Club, the Metrolink station on Mauldeth Road West and located perfectly for the commuter with access to the local motorway links to Manchester International Airport. West Didsbury is a twenty-minute walk away with Burton Road providing a lively and vibrant atmosphere and includes street cafes, bars and restaurants. The well-planned accommodation comprises; porch, an entrance hall, a through family/ lounge with bay window to the front aspect and access out into the rear enclosed lawned garden and an impressive open plan fitted kitchen/breakfast/dining room with access into the rear garden. To the first floor there are four bedrooms, bedroom one benefits from a three-piece white bathroom ensuite and there is an impressive white four-piece family bathroom. The property benefits a driveway providing off road parking, double glazing throughout, CCTV, an alarm, warmed by gas fired central heating and rear lawned garden with raised decked patio. Internal inspection is highly recommended.

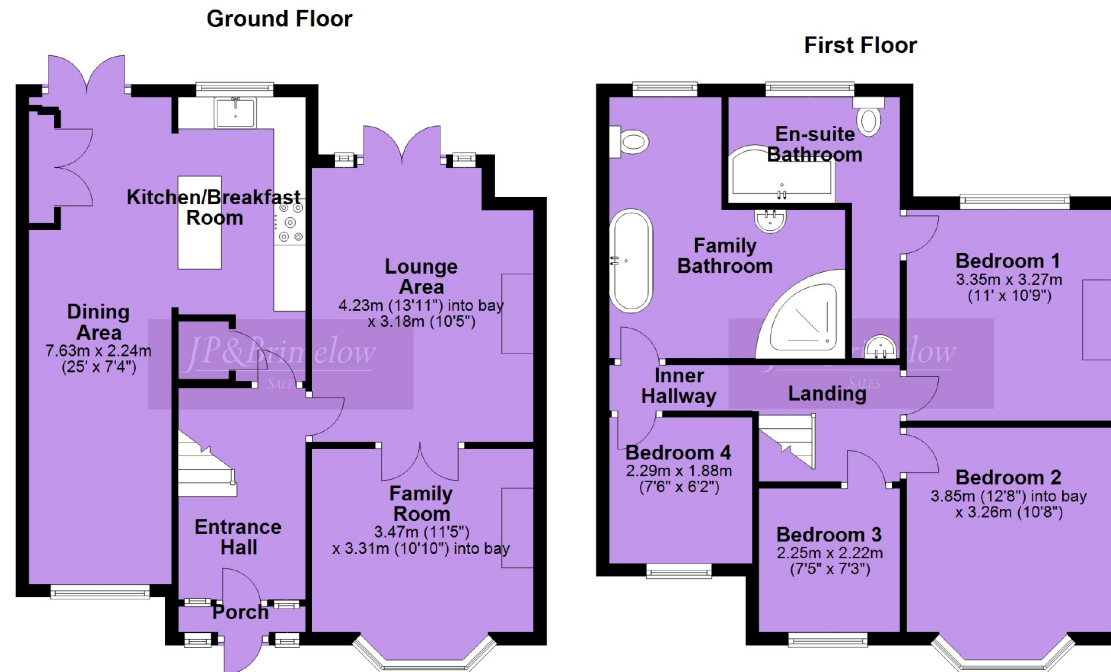




EPC Chart



Freehold Council Tax Band: C



Chorlton & Didsbury Sales
 430 Barlow Moor Road, Chorlton, Manchester, M21 8AD
 Chorlton: 0161 882 2233 Didsbury: 0161 448 0622
 E: chorlton@jpbrimelow.co.uk www.jpandbrimelow.co.uk



JP&Brimelow
 SALES

NOTICE: JP & Brimelow Chorlton & Didsbury Ltd for themselves and for the vendors or lessors of this property whose agents they are give notice that:

- (i) the particulars are set out as a general outline only for the guidance of intending purchasers or lessees, and do not constitute, nor constitute part of, an offer or contract;
- (ii) all descriptions, dimensions, references to the condition and necessary permissions for use and occupation, and other details are given in good faith and are believed to be correct but any intending purchasers or tenants should not rely on them as statements or representations of fact but must satisfy themselves by inspection or otherwise as to the correctness of each of them;
- (iii) no person in the employment of JP & Brimelow Ltd has any authority to make or give any representation or warranty whatever in relation to this property.



Follow us on Twitter @jpandbrimelows