



Eastbury Grove, London, W4 2JT

£630,000

WHITMAN & CO.

SALES · LETTINGS · COMMERCIAL

- West facing garden
- Open plan living area
- 19' Reception room
- Two double bedrooms
- Bespoke fitted kitchen
- No chain

Tenure - Leasehold with share in the freehold
 Lease Length - New 999 year lease
 Ground Rent - peppercorn
 Outgoings - 50% of expenditure
 Local Authority - Hounslow
 Council Tax - Band D

THE PROPERTY

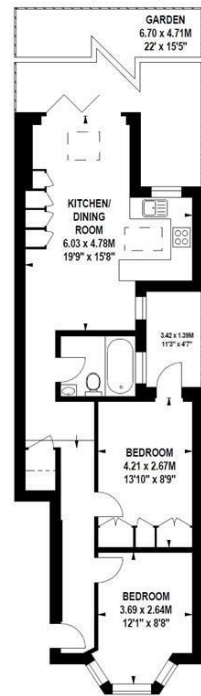
An immaculately presented two bedroom garden flat situated in this very popular residential road, located in this central Chiswick location, within a short walk of Chiswick's main thoroughfare with its array of boutique shops, restaurants and high street stores. The accommodation provides two double bedrooms, luxury bathroom, beautiful multi-aspect spacious open plan living area with bespoke fitted kitchen, skylights, wooden floors, bi-fold doors opening onto the landscaped private rear garden with westerly aspect, central light well/small courtyard, underfloor heating to main living areas. Local transport links include both Turnham Green and Stamford Brook tube stations, numerous local bus routes and convenient vehicular access via the A4/M4 to central London and Heathrow. No chain.

SITUATION



Eastbury Grove, W4

Approximate gross internal area
 58.53 sq m / 630 sq ft



Ground Floor

The floor plan is not to scale and measurements and areas shown are approximate and therefore should be used for illustrative purposes only. The plan has been prepared in accordance with the RICS code of Measuring Practice and whilst we have confidence in the information produced, it must be not be relied on. If there is any aspect of particular importance, you should carry out or commission your own inspection of the property.
 Copyright of FeaturePRO.

5-7 Turnham Green Terrace, Chiswick, London, W4 1RG

Tel 020 8747 8800

E-mail sales@whitmanandco.com

Website www.whitmanandco.com