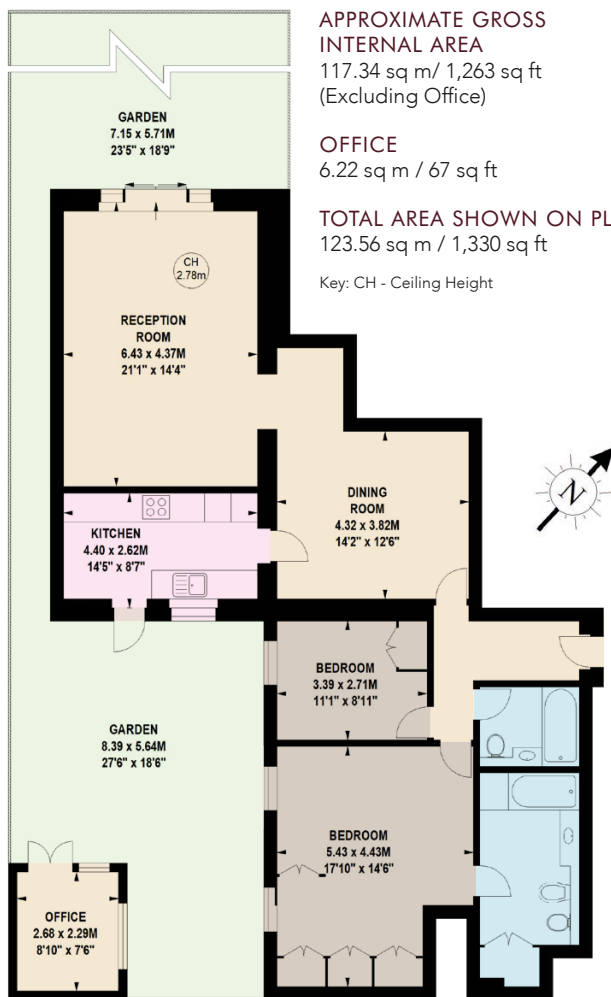




BELGRAVIA HOUSE

HALKIN PLACE, BELGRAVIA SW1X





APPROXIMATE GROSS INTERNAL AREA

117.34 sq m / 1,263 sq ft
(Excluding Office)

OFFICE

6.22 sq m / 67 sq ft

TOTAL AREA SHOWN ON PLAN

123.56 sq m / 1,330 sq ft

Key: CH - Ceiling Height

An extremely well presented two bedroom flat situated in this highly regarded 1930's portered block in the heart of Belgravia.

The flat benefits from good entertaining space, two large private patios and has access to the expansive gardens and tennis courts of Belgrave Square (by separate negotiation).

Belgravia house is a short walk to Motcomb Street, Sloane Street, Knightsbridge and all the shops, restaurants and further amenities that the area has to offer.

ACCOMMODATION & AMENITIES

- Master bedroom with ensuite bathroom
- Second bedroom
- Bathroom
- Reception room
- Dining room
- Kitchen
- Self-contained office
- Two private patio gardens.
- Lift
- Resident porter
- Central heating and hot water
- Access to Belgrave Square Gardens and tennis courts by separate negotiation



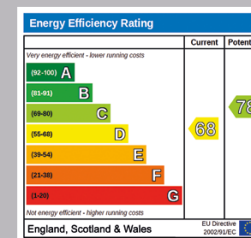
TERMS

TENURE: Leasehold circa 107 years remaining

Ground Rent: TBC

Service Charge: £10,507.20 per annum

Price: £2,400,000



NICOLAS VAN PATRICK
INCORPORATING
HOBART SLATER

6-8 MONTEPIER STREET,
LONDON SW7 1EZ
SALES | +44 (0)20 7581 8277
LETTINGS | +44 (0)20 7590 1200
info@nicolasvanpatrick.com
www.nicolasvanpatrick.com



These details have been prepared for general guidance only and should not be relied upon by prospective purchaser/ tenants who before proceeding must check and otherwise satisfy themselves as to the property and the nature, state and availability of any facility or service.