

Parkheath

Sold on Service

Kentish Town Road NW1

£265 per week (£1,148.33 Pcm)

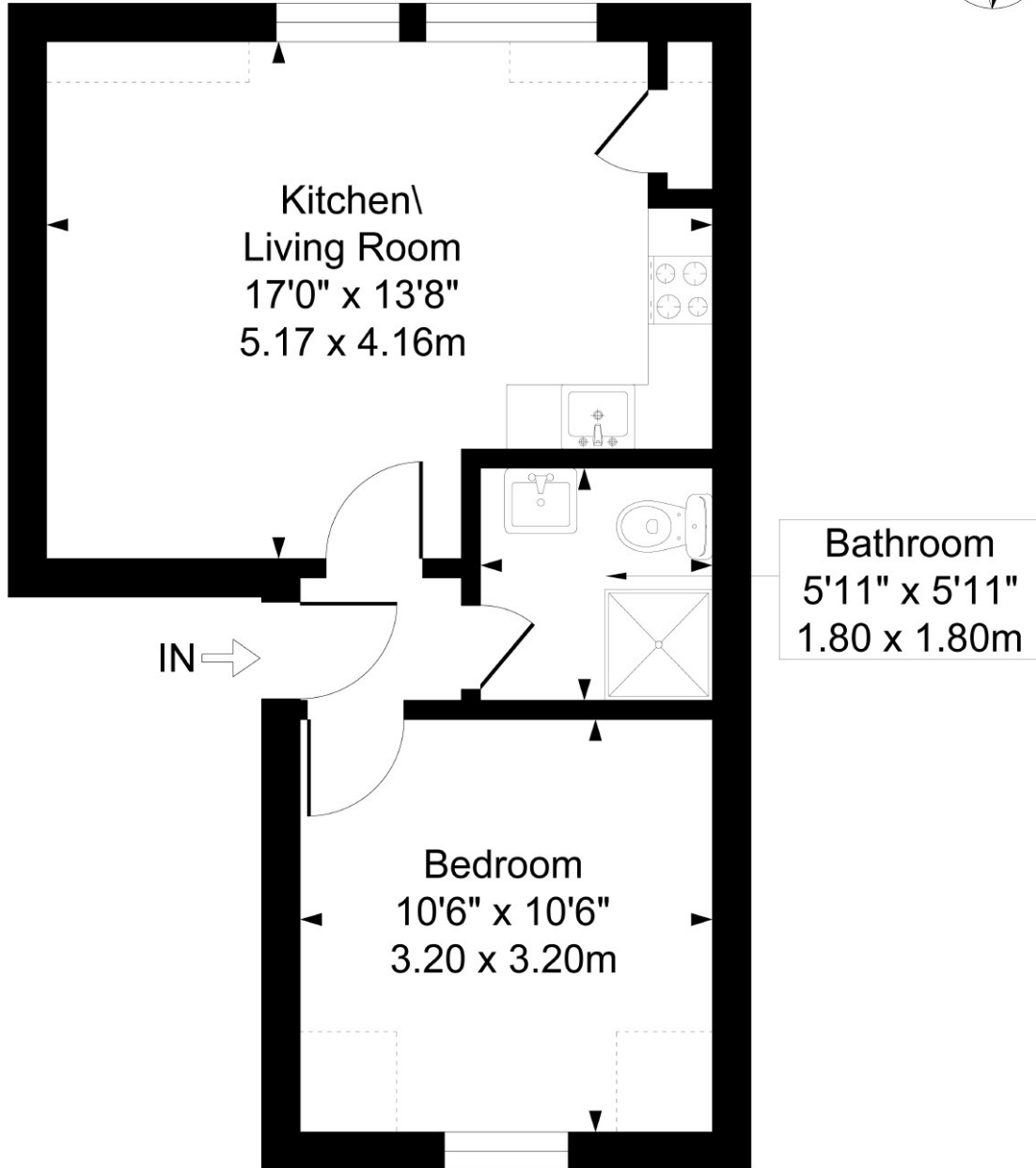


Incredibly bright and spacious one bedroom apartment
Located on the top floor of a period conversion

Open plan kitchen
Fully tiled bathroom with walk in shower

Kentish Town Road

Approximate Gross Internal Area = 35 sq m / 380 sq ft



Measured in accordance with RICS guidelines. Every attempt is made to ensure accuracy
However all measurements are approximate.
The Floor plan is illustrative purposes Only and is not to scale
ELLIE CLAIRE PHOTOGRAPHY LTD

The particulars do not constitute part of an offer or contract. The particulars, including text, photographs and plans, are for the guidance only of prospective purchasers/tenants and must not be relied upon as statements of fact. The descriptions provided therein represent the opinion of the author and whilst given in good faith should not be construed as statements of fact. Nothing in these particulars shall be deemed a statement that the property is in good condition or otherwise or that any services or facilities are in good working order. All measurements are approximate.