



4 Westland Cottage

Gilmerton, Edinburgh, EH17 8QT

Fixed Asking Price £169,995

Ref:

Charming, traditional mid terraced cottage, newly refurbished to form a quaint home within a tranquil location.

The property benefits from a new fitted kitchen, bathroom with shower, new central heating boiler, wood floors throughout and complete redecoration. There is a shared garden to the rear to which there is direct access.

The accommodation comprises:- Hall, Living Room with open plan Dining/Kitchen, Bedroom and Bathroom.

Viewing: Please telephone 07801442800

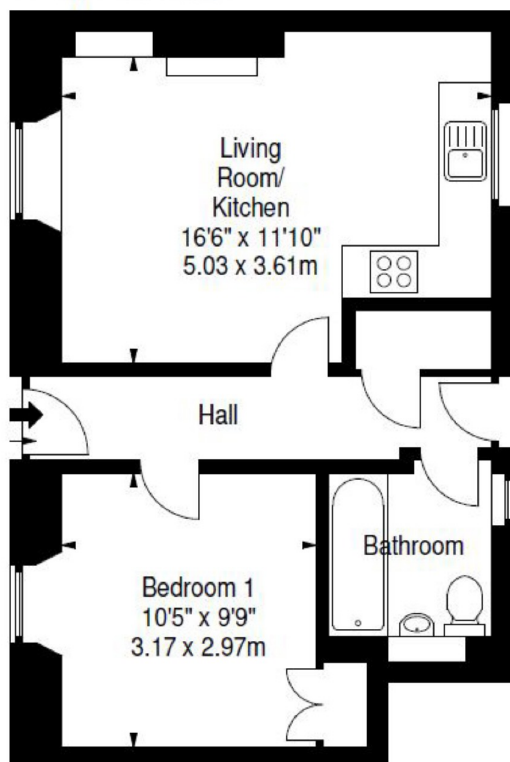




Westland Cottages,
Edinburgh,
Midlothian, EH17 8QT



Approx. Gross Internal Area
447 Sq Ft - 41.53 Sq M
For identification only. Not to scale.
© SquareFoot 2020



Ground Floor

Important Information You may download, store and use the material for your own personal use and research. You may not republish, retransmit, redistribute or otherwise make the material available to any party or make the same available on any website, online service or bulletin board of your own or of any other party or make the same available in hard copy or in any other media without the website owner's express prior written consent. The website owner's copyright must remain on all reproductions of material taken from this website.

Berwick Office
36 Hide Hill, Berwick-upon-Tweed
Northumberland, TD15 1AB

T: (01289) 307571
F: (01289) 302948
E: berwick@aitchisons.co

Wooler Office
25 High Street, Wooler
Northumberland, NE71 6BU

T: (01668) 281819
F: (01668) 281717
E: wooler@aitchisons.co



Zoopa.co.uk

