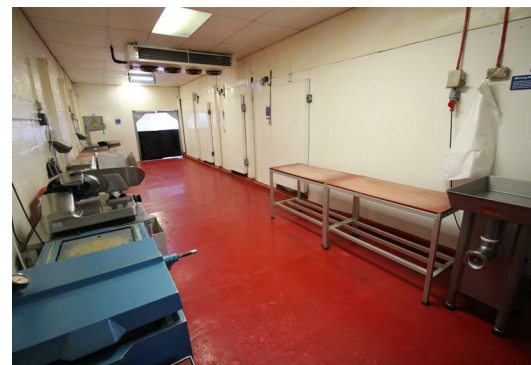
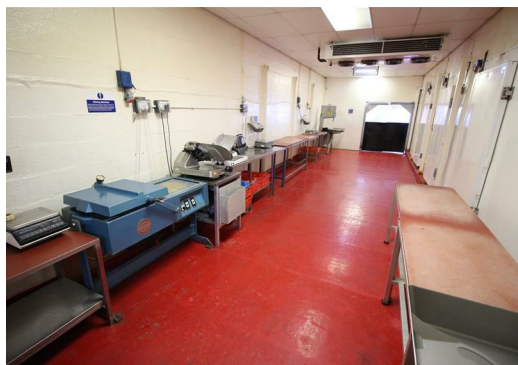




## City Trading Estate, Icknield Square

Birmingham, West Midlands, B16 0PP

£940 PCM





Light Industrial / Butchers Wholesale Preparation Unit in Trading Estate approx 1/2 mile from Birmingham City Centre. Having Loading Bay, Production Area, Two Chillers and One Freezer. Located on City Trading Estate, which is off Icknield Square in Ladywood, Birmingham near the A4540 Ladywood Middleway. Available with half price rent for January, February and March 2021.

**Loading Bay**



**Toilets and Washroom**



**Main Production Area**



**Chiller One**



**Chiller Two**



**Freezer**



**Locker Room/Changing/Wash Room**



Office



Storage Mezzanine

Outside

Front

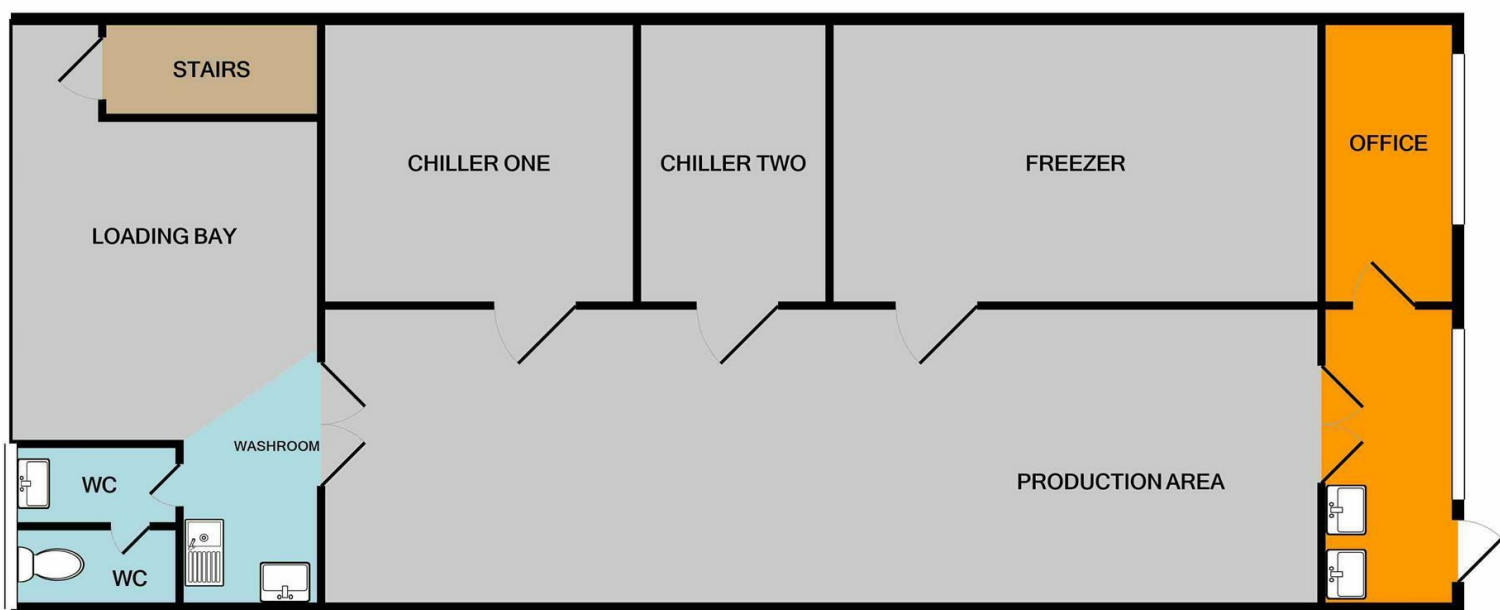


Rear

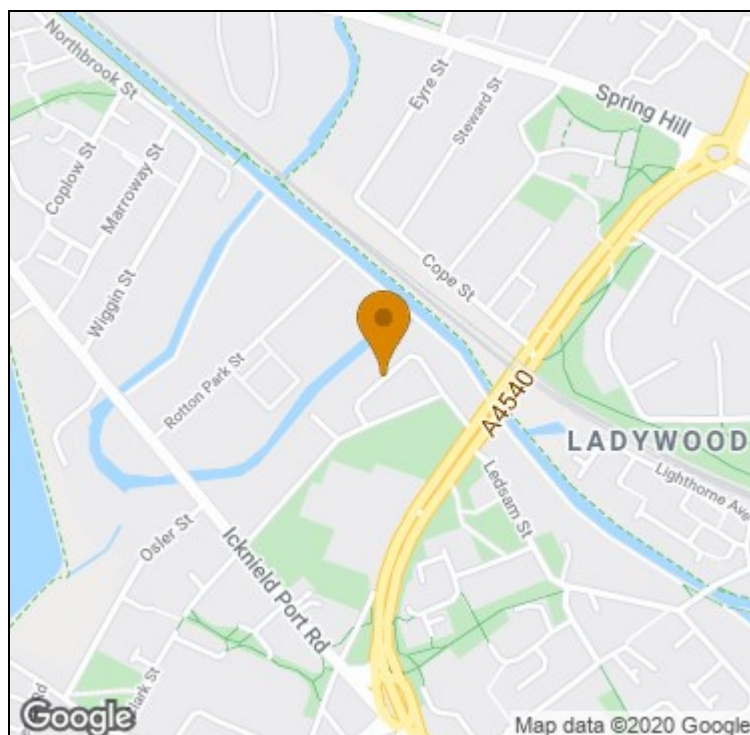


Yard/Parking





Whilst every attempt has been made to ensure the accuracy of the floor plan contained here, measurements of doors, windows, rooms and any other items are approximate and no responsibility is taken for any error, omission, or mis-statement. This plan is for illustrative purposes only and should be used as such by any prospective purchaser. The services, systems and appliances shown have not been tested and no guarantee as to their operability or efficiency can be given  
 Made with Metropix ©2020



t: 01212709744 e: [erdington@goodchilds-uk.com](mailto:erdington@goodchilds-uk.com)

[www.newtonfallowell.co.uk](http://www.newtonfallowell.co.uk)