

Ratray Road, Brixton, SW2

2 bedroom flat - conversion for sale

£650,000

Share of Freehold

Property Details

This truly lovely two double bedroom flat is split over the top two floors of a handsome converted Victorian terraced house, situated on the centrally located Ratray Road. Full of character and tastefully decorated throughout, the attractive qualities of this apartment are amplified by its exciting potential. The front of the first floor boasts a well proportioned sized reception room. The separate kitchen resides at the back side of this floor, with loads of surface space, storage and sleek, modern appliances. Up the stairs, you will find the second bedroom, with plenty of space and a characterful conversion of the fire place. This room neighbors a beautiful family sized bathroom, making this apartment ideal to share with friends or rent a spare room as there is privacy and space for everyone.

Features

- Two double bedrooms
- 2 Bathrooms
- Bright and tasteful throughout
- 808 square feet of internal space
- Split level apartment
- Short walk to local amenities
- Share of freehold
- Potential to extend (STPP)

Council tax band C

EPC rating D (56)



Ratray Road, Brixton, SW2



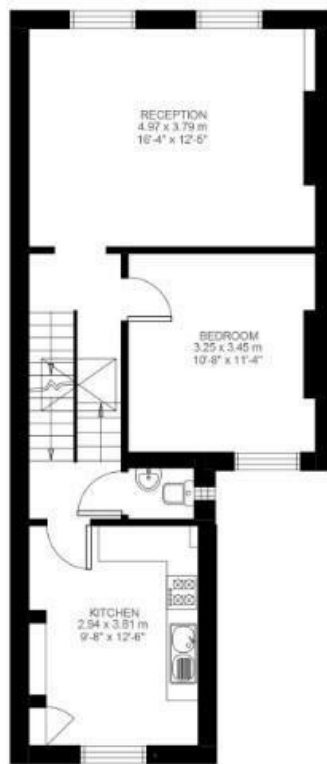
2 Bedroom Flat

Approx internal area:

808 sqft 75 sqm

While we do try our very best, floor plans are produced as a guide only and we take no responsibility for the precise accuracy with which any property is represented

Ratray Road



First Floor



Second Floor



Ground Floor



Ratray Road, Brixton, SW2

