

****AVAILABLE NOVEMBER 2020****

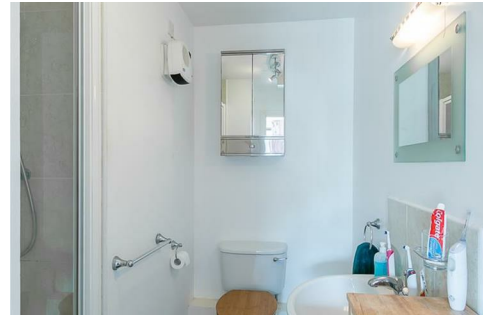
****MODERN FIRST FLOOR APARTMENT**** ****FURNISHED**** A

fantastic first floor apartment found in central Gosforth, with two double bedrooms, two bathrooms, off street parking and stylish finish throughout this is a great property not to be missed!

Situated on the first floor of the development, this smartly furnished apartment is modern throughout and comprises a communal entrance hall with lift access to all floors. In the apartment itself you will find two double bedrooms, the master of which has built in wardrobe space and an en suite shower room. There is a separate family bathroom WC, a spacious storage cupboard in the hallway and finally an impressive open plan reception, with a pleasant view from the lounge as well as a modern fitted kitchen with appliances. With electric heating and double glazed windows throughout. Externally there is off street parking, both secure underground and a communal courtyard.

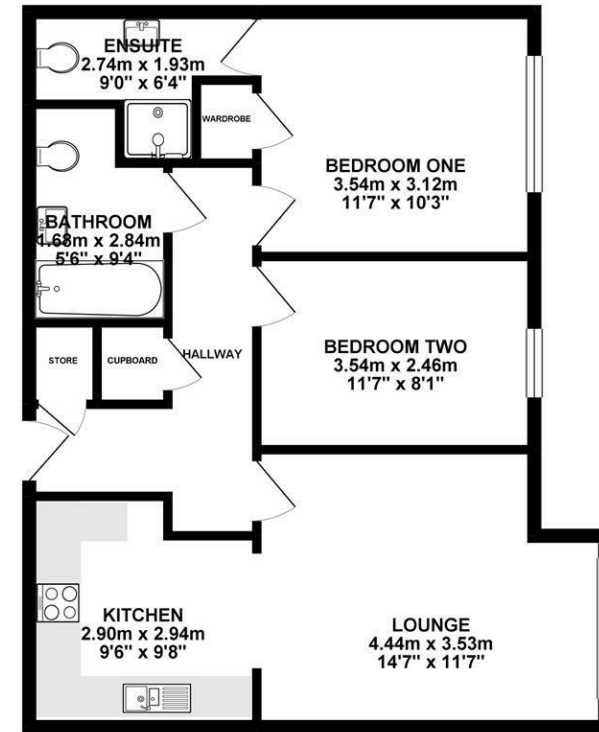
Available fully furnished, this property will make the ideal home for either a professional couple or sharers like.

Available 9th November 2020 | £725pcm | First Floor Apartment | 654 Sq. ft (60.7 m²) | Furnished | Secure Underground Parking | Spacious Lounge | Modern Fitted Kitchen | Two Double Bedrooms | En Suite &



Separate Family Bathroom | Lift Access | Central Gosforth Location | Secure Telephone Entry | DG & Elec Heating | EPC: C

GROUND FLOOR 60.76 sq. m.
(654.03 sq. ft.)



TOTAL FLOOR AREA : 60.76 sq. m. (654.03 sq. ft.) approx.

Whilst every attempt has been made to ensure the accuracy of the floorplan contained herein, measurements of doors, windows, rooms and any other items are approximate and no responsibility is taken for any error, omission or mis-statement. This plan is for illustrative purposes only and should be used in such by any prospective purchaser. The services, systems and appliances shown have not been tested and no guarantee as to their operability or efficiency can be given.
Made with Hexpov ©2019



£725 PCM

Misrepresentation Act 1967. These particulars and the descriptions and measurements herein do not constitute representation and whilst every effort has been made to ensure accuracy, this cannot be guaranteed.

