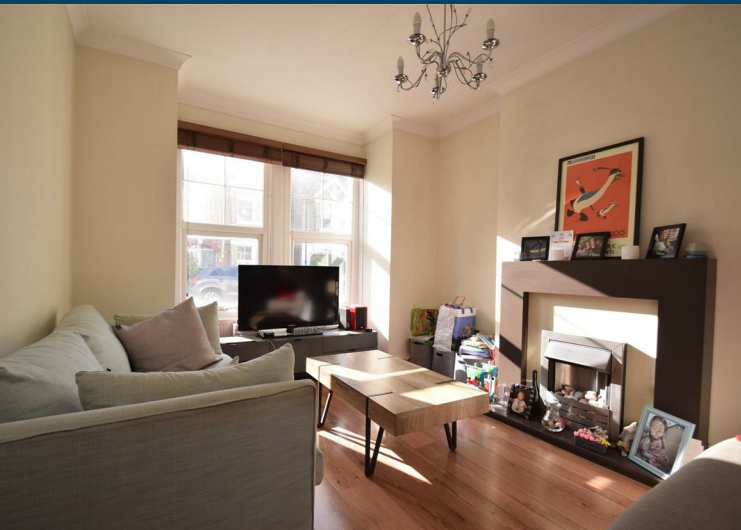
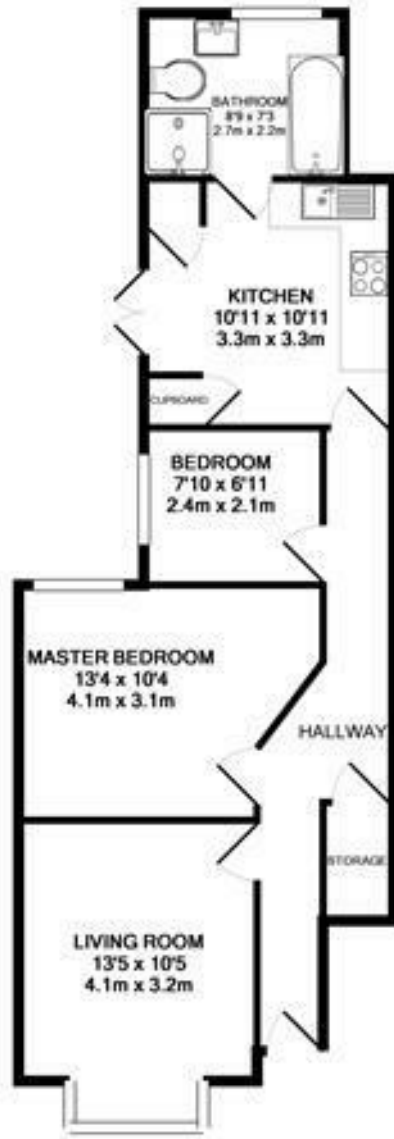


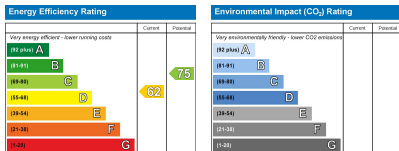
**Kenley Road
St Margarets
TW1 1JT**

£1,550





TOTAL APPROX. FLOOR AREA 601 SQ. FT. (55.8 SQ.M.)
Made with Metropix ©2017



- Ground floor Edwardian maisonette
- Beautifully presented
- Shared rear garden
- Sought after St Margarets Village location
- Stunning kitchen and luxury bathroom
- EPC - D

A superb example of a ground floor two bedroom Edwardian maisonette. The property is beautifully presented and is located in the highly sought after St Margaret's village, within a few minutes walk to St Margarets mainline station, Moor Mead Park and all local amenities. The property offers a stunning reception room with attractive fire place, one good sized double bedroom and one single bedroom/study/nursery, gorgeous kitchen with a full range of quality appliances and a luxury bathroom with separate shower. Externally is a shared rear garden.

Chase Buchanan are bonded members of ARLA propertymark.

For more information or to book a viewing, please contact:

020 8744 2888

stmargarets@chasebuchanan.london



124 St Margarets Road, St Margarets, TW1 2AA

Our community, your home

Care has been taken in the preparation of these particulars, however, their accuracy is not guaranteed and they do not form part of any contract. Measurements stated must be considered maximum.