



**Churchill Road,**  
Walsall, Staffordshire, WS2 0AW

£229,950



A RARE OPPORTUNITY HAS ARISEN TO PURCHASE A DETACHED THREE BEDROOM DORMA BUNGALOW IN AN EXTREMELY POPULAR LOCATION THE HOUSE ITSELF BOASTS THREE DOUBLE BEDROOMS, TWO RECEPTION ROOMS , TWO BATHROOMS, LARGE REAR GARDEN AND OFF ROAD PARKING FOR SEVERAL CARS . BEING NICELY SET BACK FROM THE ROAD GIVING PRIVACY BUT ACCESS TO AL,L THE LOCAL SHOPS , BUS ROUTES AND ACCESS TO THE CITY CENTRE IF NEEDED.

INTERNAL INSPECTION IS HIGHLY RECOMMENDED TO APPRECIATE THE LIVING SPACE OFFERED

THIS WONT BE AROUND FOR LONG !

**Entrance Hall**



Stairs to first floor under stairs cupboard and wall mounted radiator

**Lounge**

16'9" x 10'5" (5.13 x 3.2)



Upvc double glazed window to front elevation, wall mounted central heating radiator and feature fire place with gas fire and surround .

**Dining Room**

14'1" x 9'6" (4.3 x 2.9)



Upvc double glazed window to front elevation and wall mounted central heating radiator

**Bedroom Three**

9'10" x 13'4" (3.02 x 4.08)



Upvc double glazed window to rear and wall mounted central heating radiator

**Bathroom**

8'2" x 5'10" (2.5 x 1.8)



Three piece suite comprising of panelled bath with shower attachment, pedestal wash hand basin, low level wc,, upvc double glazed window side, wall mounted central heating radiator and tiled splashbacks.

## Kitchen

11'5" x 11'1" (3.5 x 3.4)



Fitted kitchen with a range of matching wall and base units incorporating work surfaces over, upvc double glazed door and window to rear elevation leading onto the rear garden, tiled splashbacks and wood panelled flooring.

## Landing

Doors to all rooms on the first floor

## Bedroom One

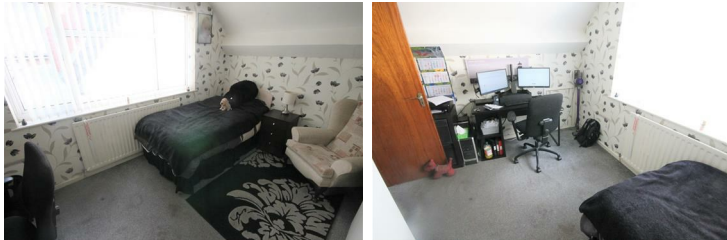
13'1" x 9'10" (4 x 3)



Upvc double glazed window to side and wall mounted central heating radiator

## Bedroom Two

8'6" x 10'9" (2.6 x 3.3)



Upvc double window to side elevation and wall mounted central heating radiator

## Shower Room

8'2" x 5'10" (2.5 x 1.8)



Refitted shower room with double shower, low level wc and pedestal wash hand basin window to rear, tiled splash backs and radiator

## Front Garden

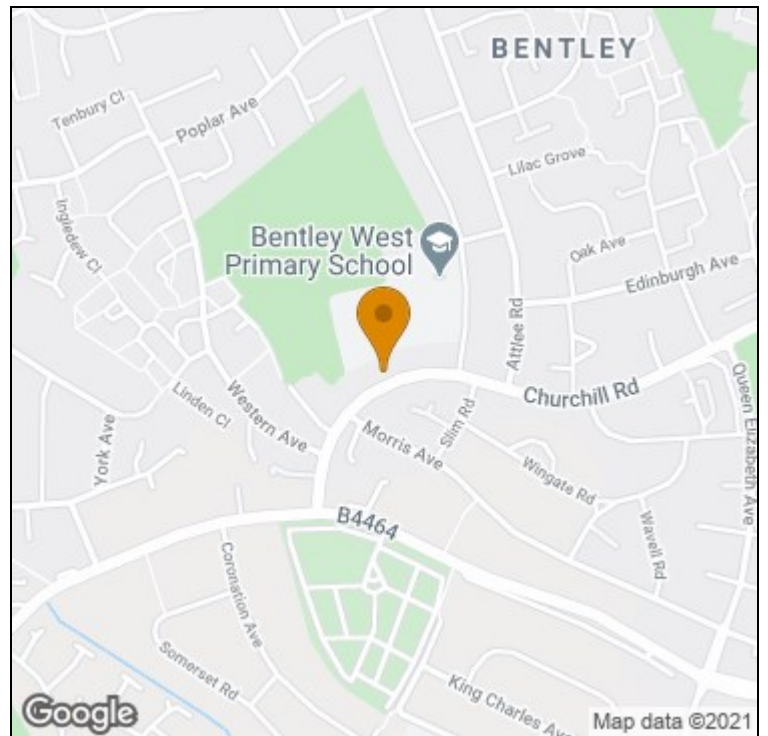
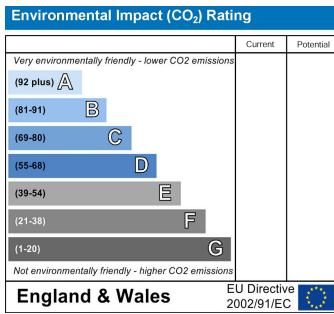
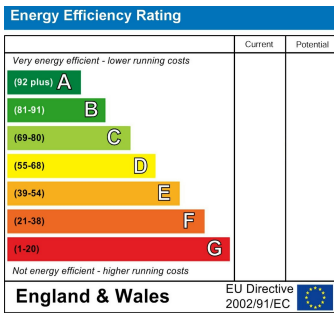


Driveway for several cars leading to garage and access to front door with laid to lawn in front of elevation

## Rear Garden



Fully enclosed and mature large rear garden mainly laid to lawn with various flower and shrub borders with pathway running through the middle



t: 01922711444 e: [bloxwich@goodchilds-uk.com](mailto:bloxwich@goodchilds-uk.com)

[www.goodchilds-uk.com](http://www.goodchilds-uk.com)