



Litchfield Street, Covent Garden
£575 pw

> 1 Bedroom > 1 Bathroom > Unfurnished

TAVISTOCKBOW
RESIDENTIAL



- > One bedroom
- > Large ensuite bathroom
- > Third floor (no lift)
- > Beautifully refurbished
- > Roof terrace
- > Unfurnished
- > Wood floors throughout
- > Open plan kitchen
- > Available mid November
- > Close to Leicester Square tube



A beautiful, recently refurbished, third floor one bedroom apartment in a central location in the Sevendials area of Covent Garden. The apartment has many great features including original fireplaces, wood paneling and roof terrace. Available mid November on an

unfurnished basis.

WHAT WE LOVE:

Beautifully refurbished
Great location in Sevendials
Moments from The Ivy
Roof terrace
A short walk to Soho with all its fantastic restaurants.

WHAT YOU NEED TO KNOW:

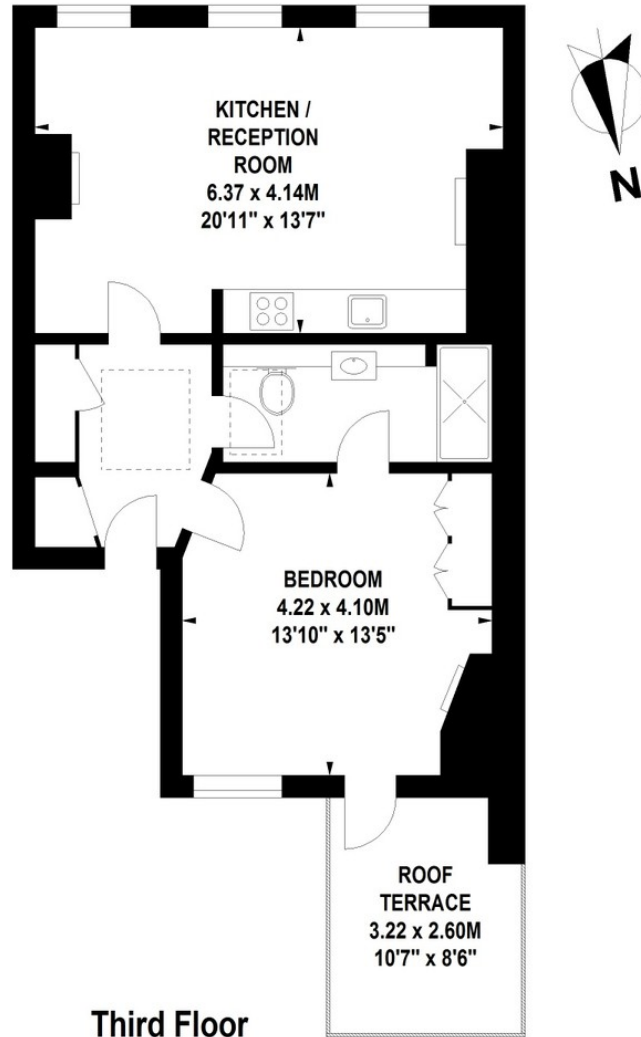
Third floor (walk up)
Open plan kitchen
Bathroom is off the bedroom
Wooden floors throughout
Available immediately.





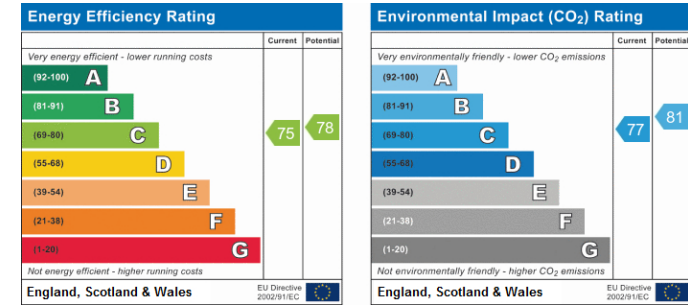
Litchfield Street, WC2

Approximate Gross Internal Area 57 sq m / 614 sq ft



Floor Plan produced for Tavistock Bow by Mays Floorplans © . Tel 020 3397 4594
Illustration for identification purposes only, not to scale
All measurements are maximum, and include wardrobes and window bays where applicable

EPC






About Us

Tavistock Bow is an independent residential agency based in Covent Garden. We are niche, boutique, creative, knowledgeable, professional and approachable. We love what we do and that's why we do it.

Contact Us

- a.** 31 Long Acre, London, WC2E 9LA
- t.** 020 7477 2177
- e.** hello@tavistockbow.com
- w.** tavistockbow.com

-  /tavistockbow
-  /tavistockbow
-  @tavistockbow