



Forty Green, Beaconsfield

£2,350 pcm

FABULOUS THREE BEDROOM APARTMENT located in semi rural location on the outskirts of Beaconsfield, This beautifully presented property occupies the entire top floor of Gomms Wood House with views over countryside and large tranquil grounds, all within easy walking distance to the new town shops and station. The property also offers three modern bathrooms, modern kitchen breakfast room, stunning spacious lounge and dining room. There is a single garage and parking space. AVAILALBLE NOW. EPC rating D. Unfurnished. Council Tax Band F

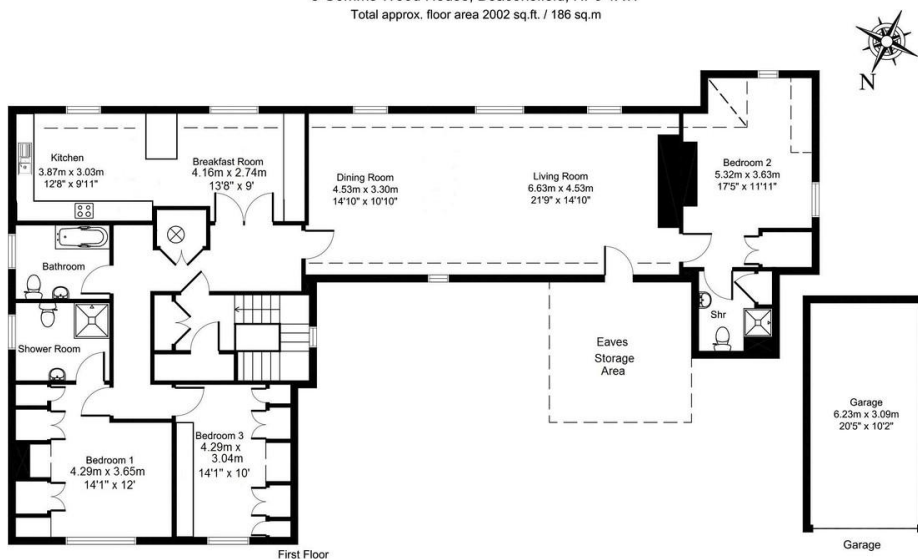
Ashington Page

www.AshingtonPage.co.uk

LETTINGS & PROPERTY MANAGEMENT



5 Gomms Wood House, Beaconsfield, HP9 1XW
Total approx. floor area 2002 sq.ft. / 186 sq.m



All measurements of walls, doors, windows, fittings and appliances, including their size and location, are shown as standard sizes and therefore cannot be regarded as a representation by the seller.

Features –

- Spacious Penthouse Apartment
- Garage and Parking
- Delightful Grounds
- Ample Storage
- Quiet Location
- Large Modern Kitchen Breakfast Room
- Three bathrooms
- EPC D, Council Tax F

For an appointment to view this property, please contact
Ashington Page Lettings on **01494 685 518**

Email Lettings@ashingtonpage.co.uk

4 Burkes Parade, Beaconsfield, Buckinghamshire, HP9 1NN

Agents Note

Whilst every care has been taken to prepare these sales particulars, they are for guidance purposes only. All measurements are approximate are for general guidance purposes only and whilst every care has been taken to ensure their accuracy, they should not be relied upon and potential buyers are advised to recheck the measurements

Ashington Page

www.AshingtonPage.co.uk

LETTINGS & PROPERTY MANAGEMENT