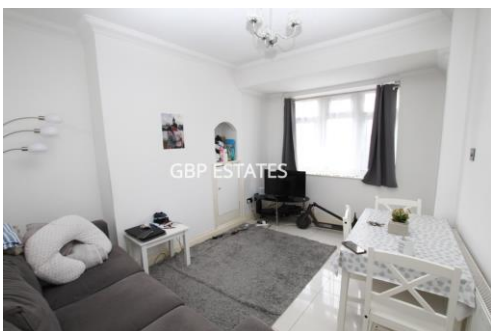




Albert Road, Romford £250,000 - £260,000



Guide Price £250,000 - £260,000. Modern and spacious is this two bedroom ground floor flat. Comprises two double bedrooms, modern kitchen with appliances, modern bathroom and cozy courtyard. Off street parking. Viewing highly recommended. Idea for commuters, walking distance to Romford Station and Town Centre. Opportunity to buy the 50% freehold share

- TWO GOOD SIZE BEDROOMS
- EASY ACCESS FOR ROMFORD TOWN CENTRE AND STATION
- MODERN KITCHEN AND BATHROOM
- WELL PRESENTED
- GROUND FLOOR MAISONETTE
- SMALL COURTYARD AREA
- PARKING

ACCOMMODATION

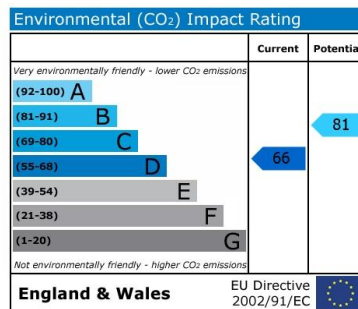
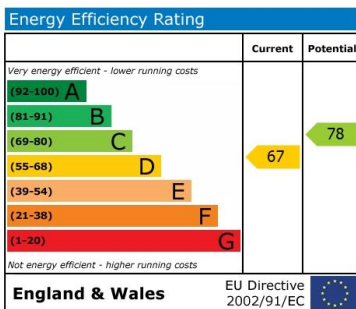
BEDROOM 10' 3" x 8' 6" (3.12m x 2.59m)

BEDROOM 7' 0" x 10' 0" (2.13m x 3.05m)

BATHROOM

KITCHEN 10' 4" x 8' 0" (3.15m x 2.44m)

LOUNGE 12' 19" x 10' 7" (4.14m x 3.23m)



For more photos and floorplan, please visit www.gbpestates.co.uk

DISCLAIMER: These particulars, whilst believed to be accurate are set out as a general outline only for guidance and do not constitute any part of an offer or contract. Intending purchasers should not rely on them as statements or representation of fact, but must satisfy themselves by inspection or otherwise as to their accuracy. We have not carried out a detailed survey nor tested the services, appliances and specific fittings. Room sizes should not be relied upon for carpets and furnishings. The measurements given are approximate. No person in this firm's employment has the authority to make or give any representation or warranty in respect of the property.