



FORD & PARTNERS

— ESTATE AGENTS —



Melissa Court, 4 Princes Gate, High Wycombe, Buckinghamshire, HP13 7AX

Guide price - £210,000



Melissa Court, 4 Princes Gate, High Wycombe, Buckinghamshire, HP13 7AX

Guide price £210,000

A two bedroom first floor apartment situated in the Melissa Court development located within walking distance to the train station and town centre.

Description

The accommodation comprises of two good sized bedrooms, one family bathroom, a separate kitchen and sitting room. The property also has the added benefit for allocated parking.

Situation

Lease Length - Approx. 106 years remaining

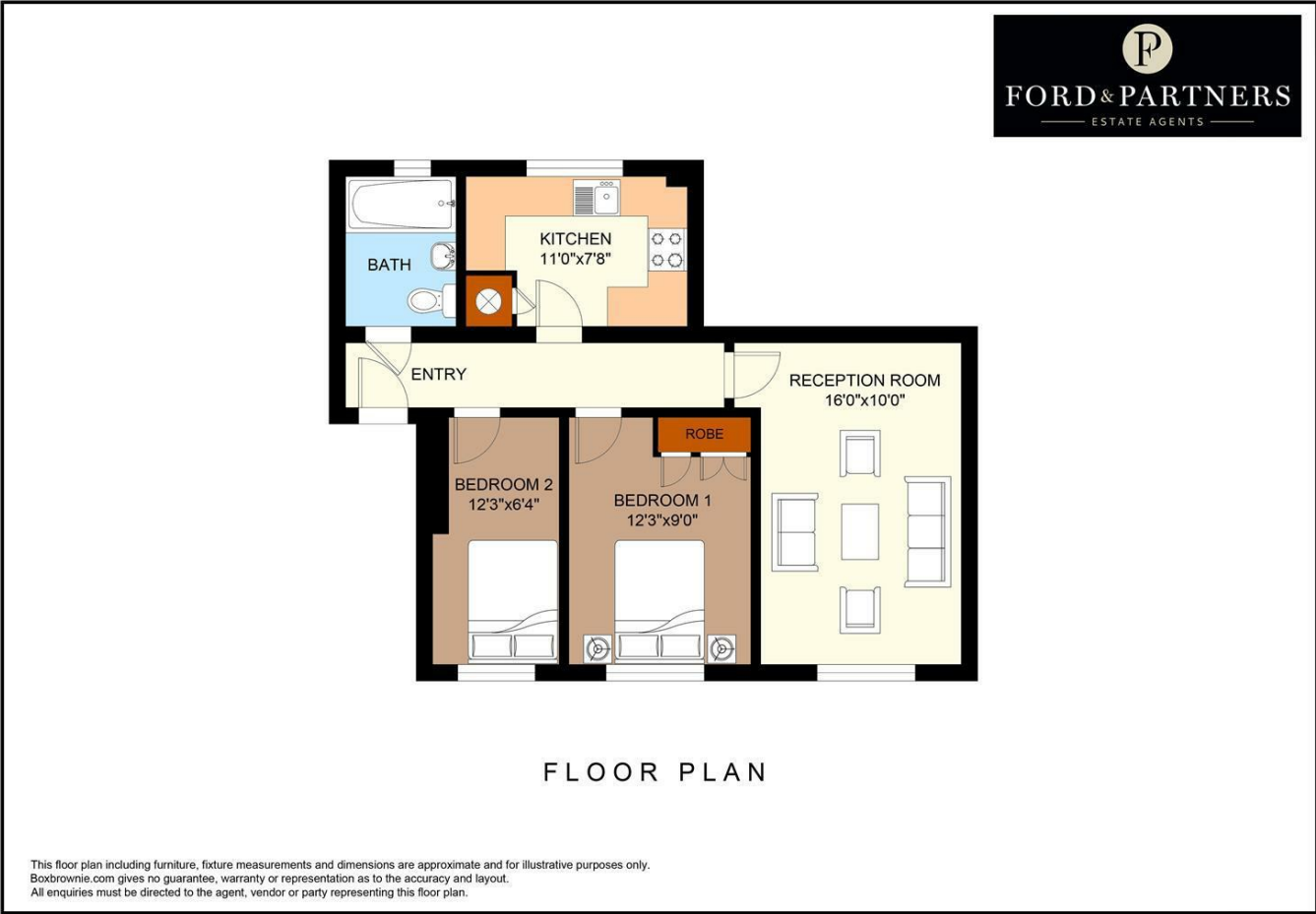
Ground Rent - £150 p/a

Service Charge - £850 p/a

Potential Rental - £950 pcm



Floor Plans



Area Map



Energy Performance Graph

