

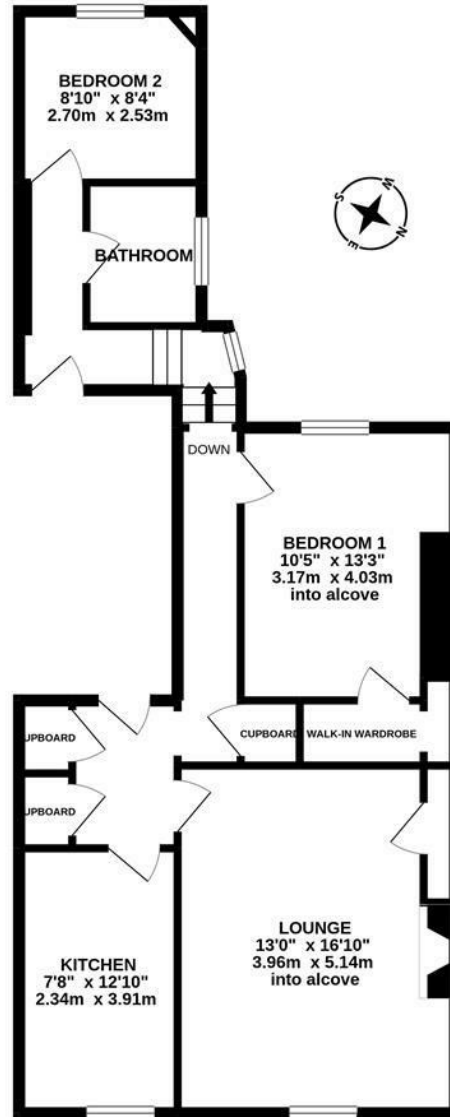


Two Bedrooms with 16ft Lounge & No Onward Chain! Two bedroom second floor apartment ideally located at Victoria Square, Jesmond within a stone's throw from the universities, Newcastle's hospitals, the shops, restaurants and cafés of Jesmond and indeed Newcastle City Centre itself.

Originally constructed circa 1840, this proud, tree-lined, Grade II listed terrace is reminiscent of a Dickensian Novel. Boasting over 750 Sq ft, the accommodation briefly comprises: Communal entrance hall and stairs to all floors; entrance hallway with three storage cupboards; 16ft lounge with alcove storage; kitchen with fitted Newcastle Furniture Company framed oak units; bathroom with three piece suite; two bedrooms, bedroom one measuring 13ft and with walk in wardrobe. Offered to the market with no onward chain, viewing is essential.

2nd Floor Flat | 753 Sq Ft (69.9m²) | Grade II Listed Terrace | Two Bedrooms | Kitchen | Bathroom | Recently Redecorated | Great Location | Shared Courtyard | EPC Rating: C

2ND FLOOR
753 sq.ft. (69.9 sq.m.) approx.



TOTAL FLOOR AREA : 753 sq.ft. (69.9 sq.m.) approx.

Whilst every attempt has been made to ensure the accuracy of the floorplan contained here, measurements of doors, windows, rooms and any other items are approximate and no responsibility is taken for any error, omission or mis-statement. This plan is for illustrative purposes only and should be used as such by any prospective purchaser. The services, systems and appliances shown have not been tested and no guarantee as to their operability or efficiency can be given.
Made with Metreplex. ©2020

Offers Over £160,000



IMPORTANT NOTE: These particulars and the descriptions and measurements herein do not constitute representation and whilst every effort has been made to ensure accuracy, this cannot be guaranteed.

