



Valleyfield Road

Streatham, SW16 2HX

Asking Price £1,075,000

Galloways are delighted to offer this fantastic sized double fronted five-bedroom house to the market. The property boasts 2535sq ft of floor space and still has plenty of scope to extend. Situated within walking distance of the popular Streatham Common and located within the catchment area for both Bishop Thomas Grant and Julians Primary School. Located within 15 minutes walk of Streatham station.

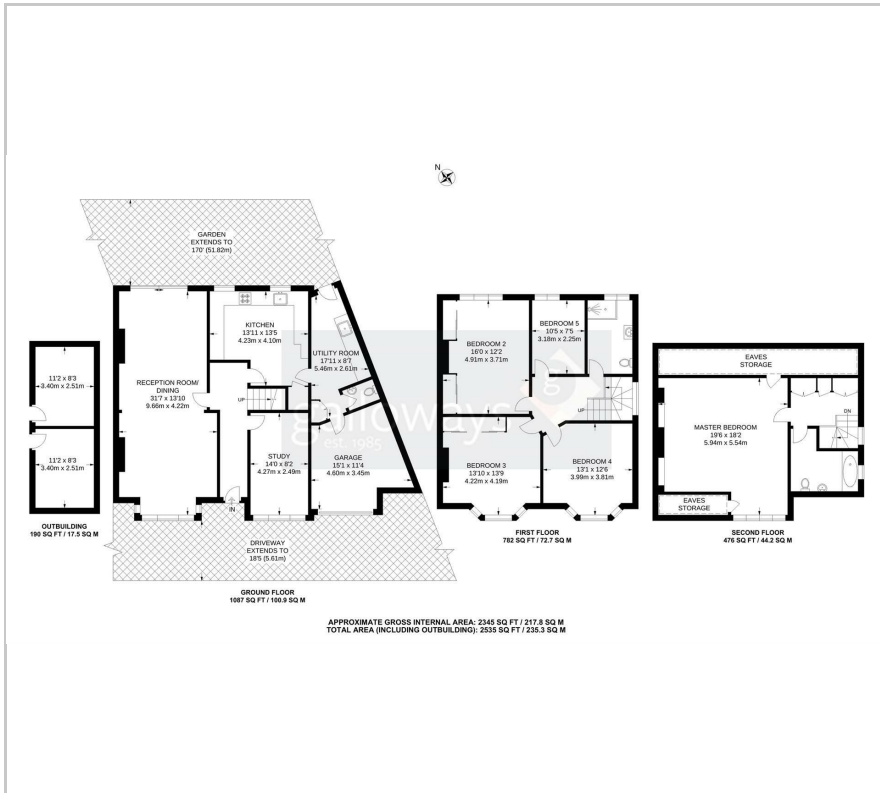
- FIVE DOUBLE BEDROOMS
- DOUBLE FRONTED SEMI-DETACHED HOUSE
- OFF-STREET PARKING
- ATTACHED GARAGE
- POTENTIAL TO EXTEND (SUBJECT TO PLANNING AND CONSENT)
- BEAUTIFUL 170FT REAR GARDEN
- CONTEMPORARY FITTED KITCHEN/BREAKFAST ROOM
- UTILITY ROOM
- TWO BATHROOMS PLUS GROUND FLOOR WC
- STUDY

Viewing

Please contact our West Norwood Office on if you wish to arrange a viewing appointment for this property or require further information.



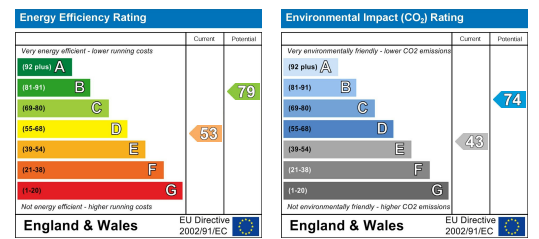
Floor Plan



Area Map



Energy Efficiency Graph



These particulars, whilst believed to be accurate are set out as a general outline only for guidance and do not constitute any part of an offer or contract. Intending purchasers should not rely on them as statements of representation of fact, but must satisfy themselves by inspection or otherwise as to their accuracy. No person in this firm's employment has the authority to make or give any representation or warranty in respect of the property.