



**52 MILL STREET, ST14 5JX**  
**£750 PER CALENDAR MONTH**



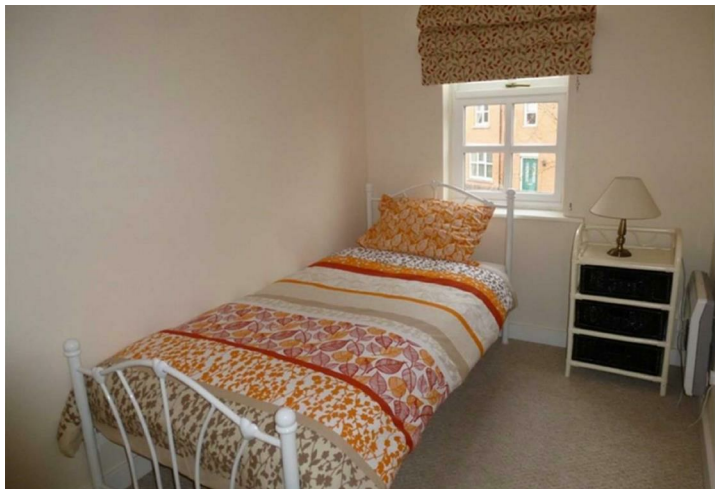


## DESCRIPTION

An immaculate three bedroom end of terrace property situated in the desirable village of Rocester being within close proximity of Ashbourne and Uttoxeter and providing easy access to the motorway network, Alton Towers and JCB. The property has been refurbished in recent years and in brief comprises: lounge, modern fitted kitchen, three bedrooms and a family bathroom. New double glazing throughout. Externally there are gardens to both the front and rear of the property with the added benefit of two allocated parking spaces. Available 31st October, FULLY FURNISHED.

## KEY FEATURES





**DIMENSIONS**



ASHWORTH HOLME

16-18 CROSS STREET, SALE, CHESHIRE M33 7AE  
T 0161 973 6680 E INFO@ASHWORTHHOLME.CO.UK  
WWW.ASHWORTHHOLME.CO.UK

Energy Efficiency Rating		
	Current	Potential
Very energy efficient - lower running costs		
(92 plus) A		
(81-91) B		
(69-80) C		
(55-68) D		
(39-54) E		
(21-38) F		
(1-20) G	1	1
Not energy efficient - higher running costs		
England & Wales		EU Directive 2002/91/EC

Environmental Impact (CO <sub>2</sub> ) Rating		
	Current	Potential
Very environmentally friendly - lower CO <sub>2</sub> emissions		
(92 plus) A		
(81-91) B		
(69-80) C		
(55-68) D		
(39-54) E		
(21-38) F		
(1-20) G	1	1
Not environmentally friendly - higher CO <sub>2</sub> emissions		
England & Wales		EU Directive 2002/91/EC

