



Arborfield Close, Streatham Hill, SW2

£350,000

2 bedroom flat - purpose built for sale

Property Details

Set within a quiet modern build development, this secure two double bedroom flat offers an exciting opportunity to stamp your mark on a leafy and residential pocket of Streatham Hill. The flat boasts a large open reception room that opens onto the ample kitchen. Large windows allow a flow of natural light and air into the property and the flat comes with an allocated parking space. The master bedroom offers good built in storage and plenty of space. The second bedroom is also of good size and both have an airy and light atmosphere providing peaceful spaces to unwind. The flat has a fully equipped modern bathroom and everything is set off a hallway on to which the front door opens. Overall a lovely flat with huge potential. Here there is an opportunity to take a decent property and make it truly your own in an increasingly more popular part of London, within walking distance to Streatham Hill, Brixton and Tulse Hill stations. This quiet new build offers convenient transport links and easy access to both Brockwell Park and Tooting Bec Common. Streatham High Road boasts local amenities including M&S and Brixton is only a leisurely stroll or short bus ride down Brixton Hill.

Features

- Two double bedrooms
- Secure modern development
- Private parking
- Bright and airy atmosphere throughout
- Good transport links
- Easy access to the amenities on Streatham High Road
- A short walk to Brockwell Park and Tooting Common
- Chain-free

Council tax band C EPC rating C (71)



Arborfield Close, Streatham Hill, SW2



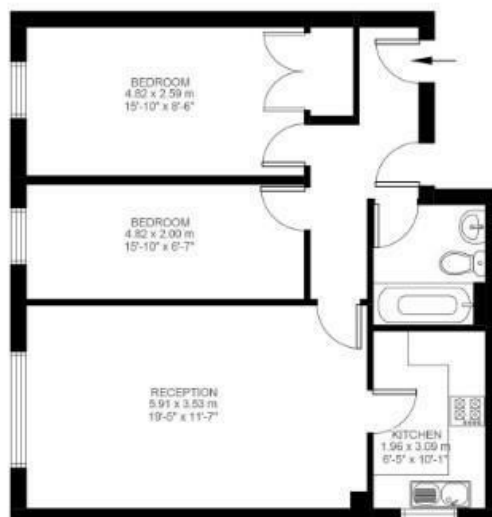
Arborfield Close

2 Bedroom Flat

Approx internal area:

682 sqft 63 sqm

While we do try our very best, floor plans are produced as a guide only and we take no responsibility for the precise accuracy with which any property is represented



Second Floor



Arborfield Close, Streatham Hill, SW2

