



Rosamond House, Westminster
London SW1P

GARTONJONES.COM



Rosamond House, Westminster London, SW1P

£625 Per Week

A spacious 1 double bedroom apartment to rent of approx. 692sq.ft (64.3sq.m) on the 2nd floor (with lift) of this modern popular development within a stone's throw of the River Thames and Houses of Parliament. The apartment is offered furnished and further benefits from an open plan reception room with full width floor to ceiling windows accessing a balcony, there is a smart kitchen with Siemens integrated appliances, wood flooring, comfort cooling, a luxury bathroom suite and excellent storage including a utility cupboard housing a washer dryer, two large separate cupboards and fitted wardrobes to the bedroom. You will have a 24 hour concierge service, a gym and also access to a roof garden with spectacular views of the London skyline and taking in iconic landmarks. You will be within easy reach of local amenities including shops and restaurants and the transport links of Victoria, St James's Park and Westminster are all within walking distance.

- 692sq.ft (64.3sq.m)
- 2nd Floor (With Lift)
- 1 Double Bedroom Apartment
- Open Plan Reception Room
- Kitchen with Siemens Integrated Appliances
- Luxury Bathroom Suite
- 24 Hour Concierge & Residents Gym
- Winter Balcony & Access to Roof Garden with Spectacular Views
- Close to Local Amenities Including Shops, Restaurants & Transport Links
- Walking Distance to Victoria, St James's Park and Westminster Station

GARTON JONES.COM

49 Marsham Street Lettings:

London

SW1P 3DP

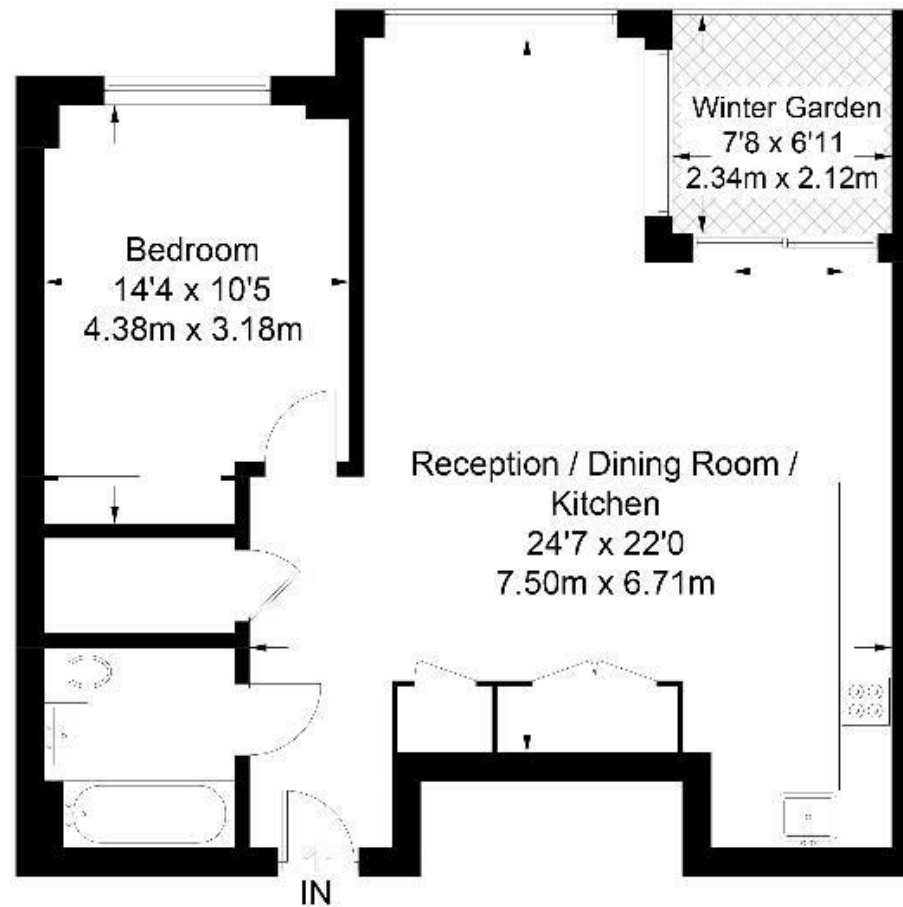
+44 (0) 20 7340 0480

westminster@gartonjones.com

www.gartonjones.com



Approximate Gross Internal Area = 692 sq ft / 64.3 sq m
(Excluding Winter Garden)



Second Floor

Not to scale, for guidance only and must not be relied upon as a statement of fact.
All measurements and areas are approximate only and have been prepared in
accordance with the current edition of the RICS Code of Measuring Practice.

