

Ascend

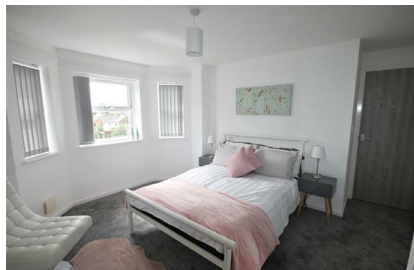
Built on higher standards



Walmsley Court 40 Wellington Road Manchester M30 0NP

- Two double bedrooms
- Available furnished OR unfurnished
- Stunning new build development
- Bike Shed
- Walking distance to Train and Metrolink
- 1st floor location
- Parking space available at £25pm
- Appliances included
- Great communal garden
- Pets not allowed at the development

£800 PCM



Two bedroom, 1st floor apartment

An impressive converted development featuring 9 show stopping apartments close to Monton village. Walmsley Court is home to an array of 1-3 bed pads, from private garden delights, to a luxury penthouse. Whether you're looking for furnished or unfurnished, these super stylish homes are available to rent right now!

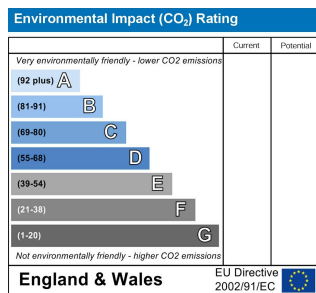
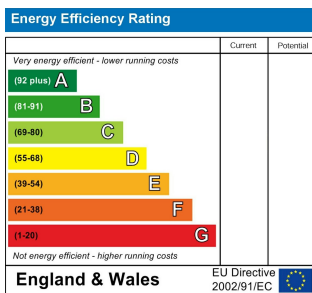
This nifty regeneration is now a collection of stunning homes for the modern renter. Just a 5 minutes' walk to the train station, and 8 minutes to the Metrolink, it's simply ideal for commuters and those that love a well-balanced city and sub-urban lifestyle. Monton village is also within a 15 minutes walk where you can explore the great bars, shops and restaurants on offer.

Externally, the set-back development offers a relaxing communal garden with seating as well as secure cycle storage. There's also limited car park spaces available at just £25 per month.

Step inside your 2-bed, first floor apartment and enjoy a spacious, characteristic home that has been designed to ensure the highest standards of living. A tasteful kitchen with modern units and integrated appliances shares its open plan layout with a contemporary living room, all based with a stylish wooden floor. Included are dishwasher, oven, hob, fridge/freezer and a washer/dryer which is housed in a separate utility cupboard. There are also fitted blinds to the bedrooms and living space. This first floor apartment also benefits from large front facing bay windows.

You'll love the double bedrooms too, offering well planned layouts with plush grey carpet, lots of natural daylight and fitted sliding wardrobes with mirrored doors – great for amplifying the room size and an essential for getting ready! The bathroom is a stunning 4-piece suite featuring a walk-in shower and separate bath unit. All of which are housed in a modern, premium tiled space.

This unique development is sure to impress! Call our Monton office! Images are for marketing purposes only.



Ascend
Built on higher standards

0161 707 7584

192 Monton Road, Monton, Manchester, M30 9PY

monton.sales@ascendproperties.com,
monton.lettings@ascendproperties.com
www.ascendproperties.com



These particulars, whilst believed to be accurate are set out as a general outline only for guidance and do not constitute any part of an offer or contract. Intending purchasers should not rely on them as statements of representation of fact, but must satisfy themselves by inspection or otherwise as to their accuracy. No person in this firm's employment has the authority to make or give any representation or warranty in respect of the property