



1 DALMOAK ROAD, GREENOCK, PA15 3AE





Description

Occupying a sought after corner location this extended and internally redesigned three bedroom SEMI DETACHED VILLA offers a unique family home which backs onto the countryside. There is a monoblock parking area to the side. The front garden is bound by a brick wall with paved patio. There is a paved rear garden and decked area.

Specification includes: double glazing and gas central heating. Views extend beyond surrounding properties over Greenock towards the River Clyde with the hills beyond. Apartments comprise: Entrance Porch by UPVC double glazed door with tiled floor and inbuilt cupboard. The airy Lounge has a front facing floor length window formation and there is useful inbuilt cupboard. There is a downstairs WC compartment with front window, plus two piece suite comprising: pedestal wash hand basin and wc. Additional features include: wall and floor tiling.

The Dining Area is on semi open plan with the lounge via an archway and also on open plan with the quality fitted kitchen offering a contemporary living space ideal for families. There are patio doors allowing for direct access from the dining room to the garden. The quality Kitchen features oak style units with glazed display cases, slate effect work surfaces and splashback tiling. Appliances include: stainless steel chimney extractor hood, five ring gas hob and electric oven, There is Utility Cupboard with plumbing for a washing machine.

Stairs lead to the Upper Landing with side window. There are two double Bedrooms and 3rd single Bedroom all with fitted mirrored wardrobes. The Bathroom with front window is a spacious apartment with quality four piece suite comprising: semi pedestal wash hand basin, wc and bath with double sized shower area. Additional features include: wall and floor tiling.

Viewing is highly recommended for this rare opportunity to acquire a unique extended home. EPC =

Measurements

Entrance Porch

WC Compartment

Lounge

13'8 x 13'7 (4.17m x 4.14m)

Dining Room

9'11 x 9'6 (3.02m x 2.90m)

Kitchen

9'11 x 8'3 (3.02m x 2.51m)

Upper Landing

Bedroom1

8'9 x 11'5 (2.67m x 3.48m)

Bedroom 2

8'7 x 9'11 (2.62m x 3.02m)

Bedroom 3

6'6 x 10'0 (1.98m x 3.05m)

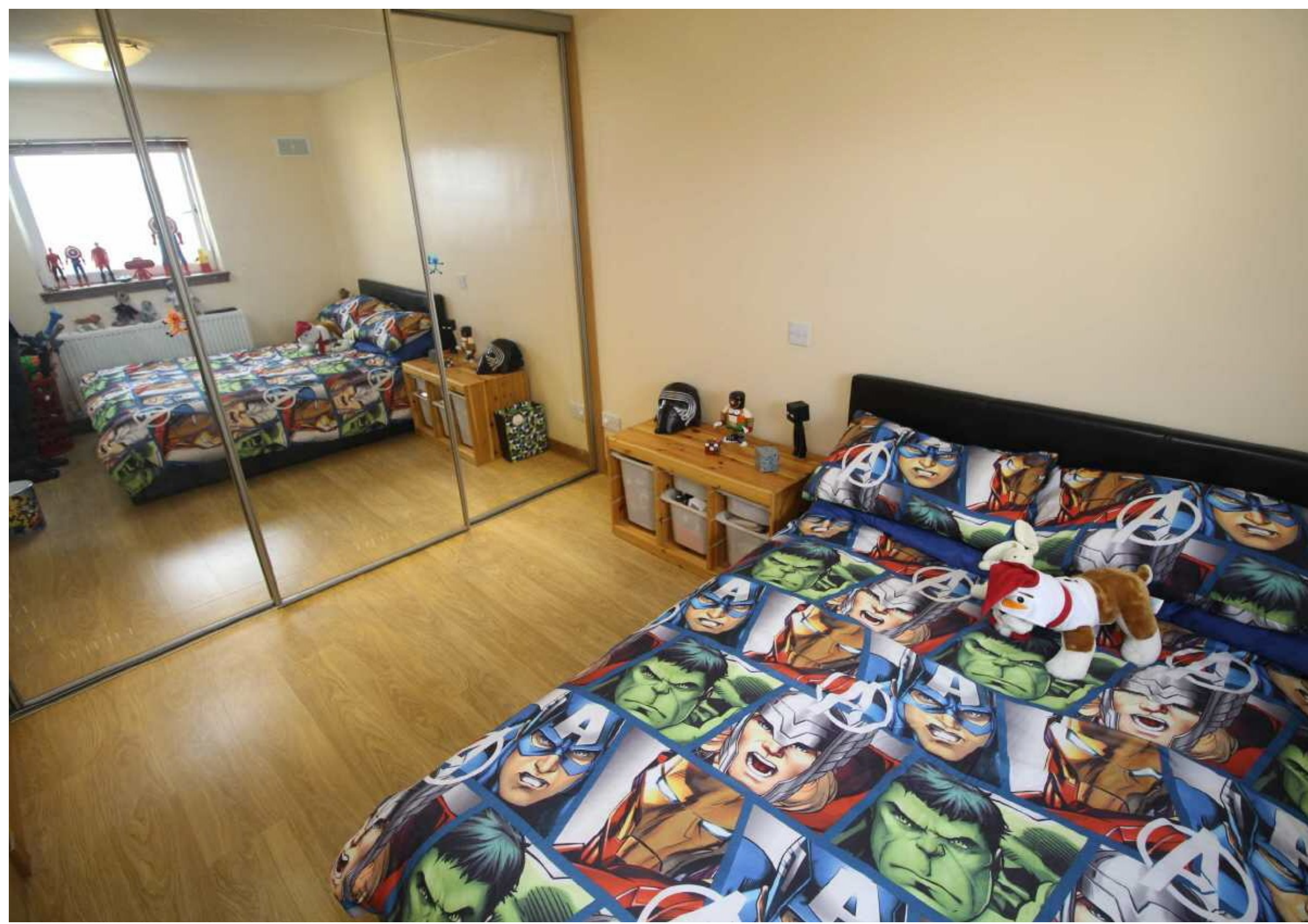
Bathroom



Floorplans are indicative only - not to scale
Produced by Plush Plans Ltd











The
next
step....



To view call our office on

01475 888400

Mon/Fri - 9.30am - 5pm

Tue/Wed/Thur - 9am - 5pm

House to sell?

Arrange a free appraisal of your current home.

Require a solicitor?

Ask for a free legal quotation from Neill Clerk & Murray, Solicitors.
www.neillclerkmurray.co.uk

**60 West Blackhall Street
Greenock**

PA15 1UY

t:01475 888400

f:01475 888500

e: sales@neillclerk.co.uk

w: www.neillclerk.co.uk

Agents Notes:

These sales particulars are set out as a general outline only, issued in good faith, but do not constitute representations of fact and do not form part of any offer or contract. Any services, equipment, appliances, fittings or central heating systems have not been tested and no warranty is given or implied that these are in working order. All measurements are approximate and for guidance only.

Neither Neill Clerk Estate Agents nor any of its employees or agents has any authority to make or give any representation or warranty whatever in relation to this property.

rightmove 
Zoopla.co.uk

 **neillclerk**
ESTATE AGENTS