



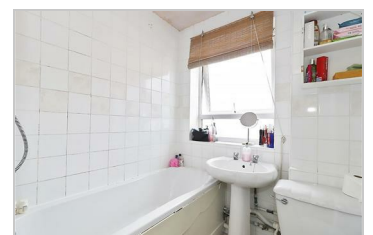
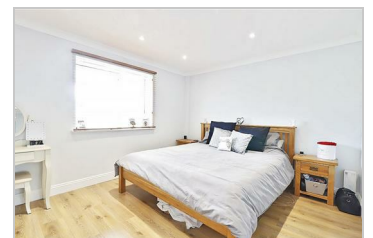
Trent Road, Chelmsford, CM1 2LQ

Offers In Excess Of £150,000

Sold.co.uk are delighted to offer to the market this centrally located 2 bedroom top floor flat located in a popular location close to all local amenities including local shops, schools and local transport links..

Briefly the well-proportioned accommodation comprises entrance hall with access to the lounge, fully fitted kitchen, 2 good sized double bedrooms and the family bathroom... This property also benefits from loft space, gas central heating and double glazing throughout. Externally there is a storage unit.

This property would be an ideal family home or investment property. In our opinion it should be viewed to appreciate the opportunity and space on offer.



SOLD.co.uk
1st Floor, 37-39 Maddox St
London
W1S 2PP

Tel: 0203 651 8305 | Email: sales@sold.co.uk

Energy Efficiency Rating		Environmental Impact (CO ₂) Rating	
Very energy efficient - lower running costs	Current	Current	Target
95-100 A	71	Very low environmental impact - lower CO ₂ emissions	67
85-94 B	81	Low environmental impact - lower CO ₂ emissions	79
75-84 C		Medium environmental impact - lower CO ₂ emissions	
65-74 D		High environmental impact - lower CO ₂ emissions	
55-64 E		Very high environmental impact - lower CO ₂ emissions	
45-54 F			
35-44 G			