



- Secure First Floor Apartment
- One Double Bedroom
- Open Plan Living Room/Kitchen
- Bath/Shower
- Gas Central Heating
- Close To Great Transport Links
- UPVC Double Glazing
- Natural Wood Floors
- Available Now

****AVAILABLE NOW**** A charming split-level one double bedroom apartment set on the first floor of an imposing period building ideally located just a short walk to Bowes Park National Rail and Bounds Green tube stations with local shops close by. Also within an easy walk are the wonderful green open spaces of Alexandra Park with its famous Palace. This attractive property is neutrally presented and boasts UPVC double glazing throughout, Spacious open plan living room/kitchen and a bath/shower.
****FURNISHED****

Elvendon Road, London, N13 4SJ

£975 pcm

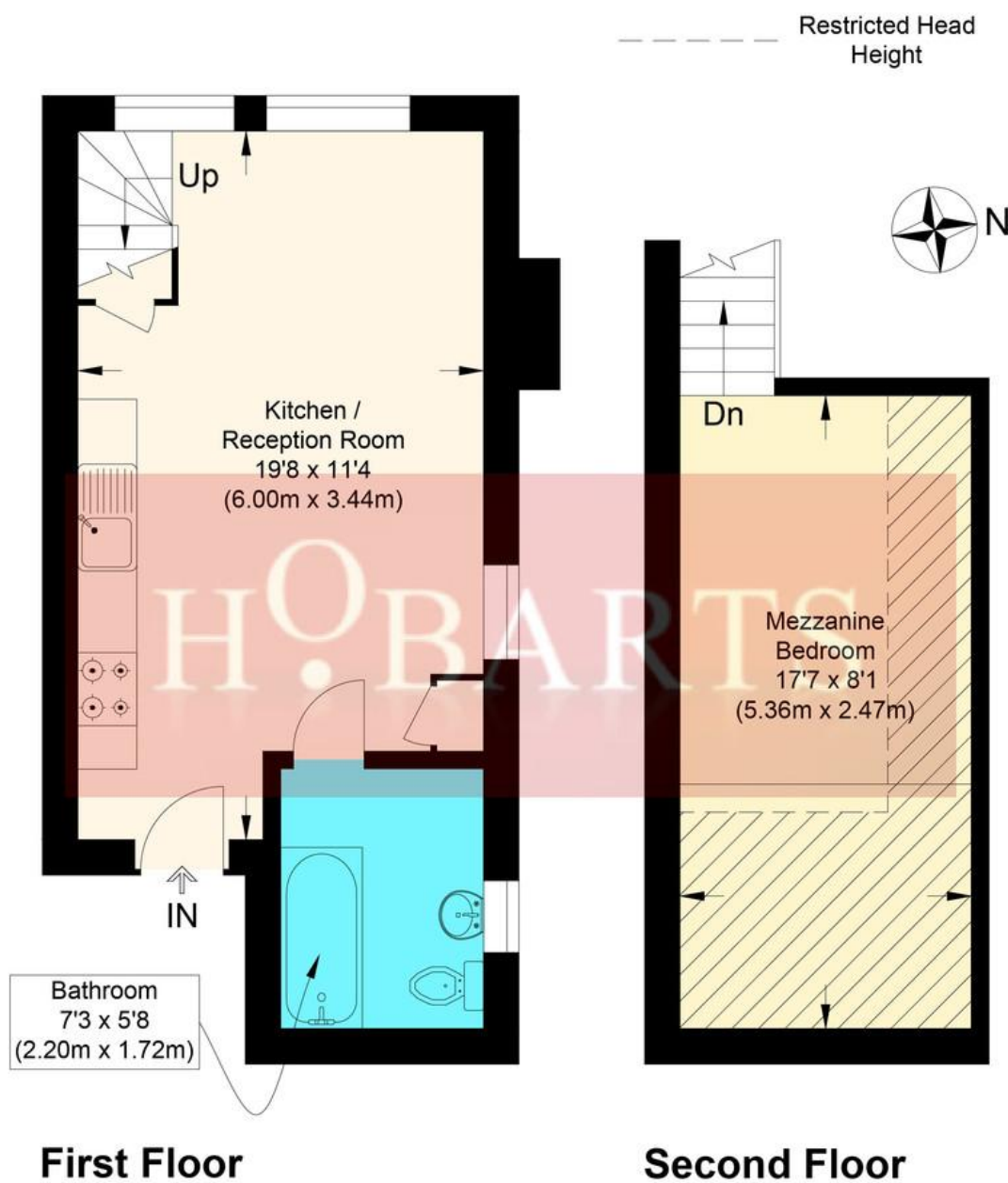
HOBARTS ESTATE AGENTS

3 Crescent Road, Alexandra Park, London, N22 7RP

rent@hobartsproperty.co.uk

www.hobarts.co.uk

0208 889 4322



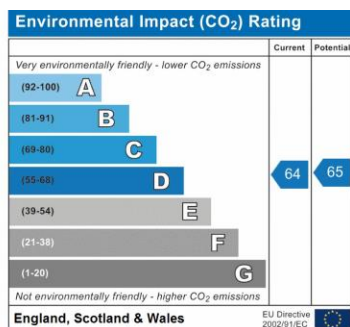
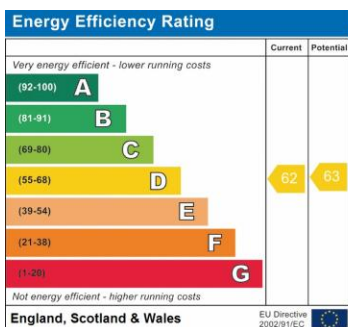
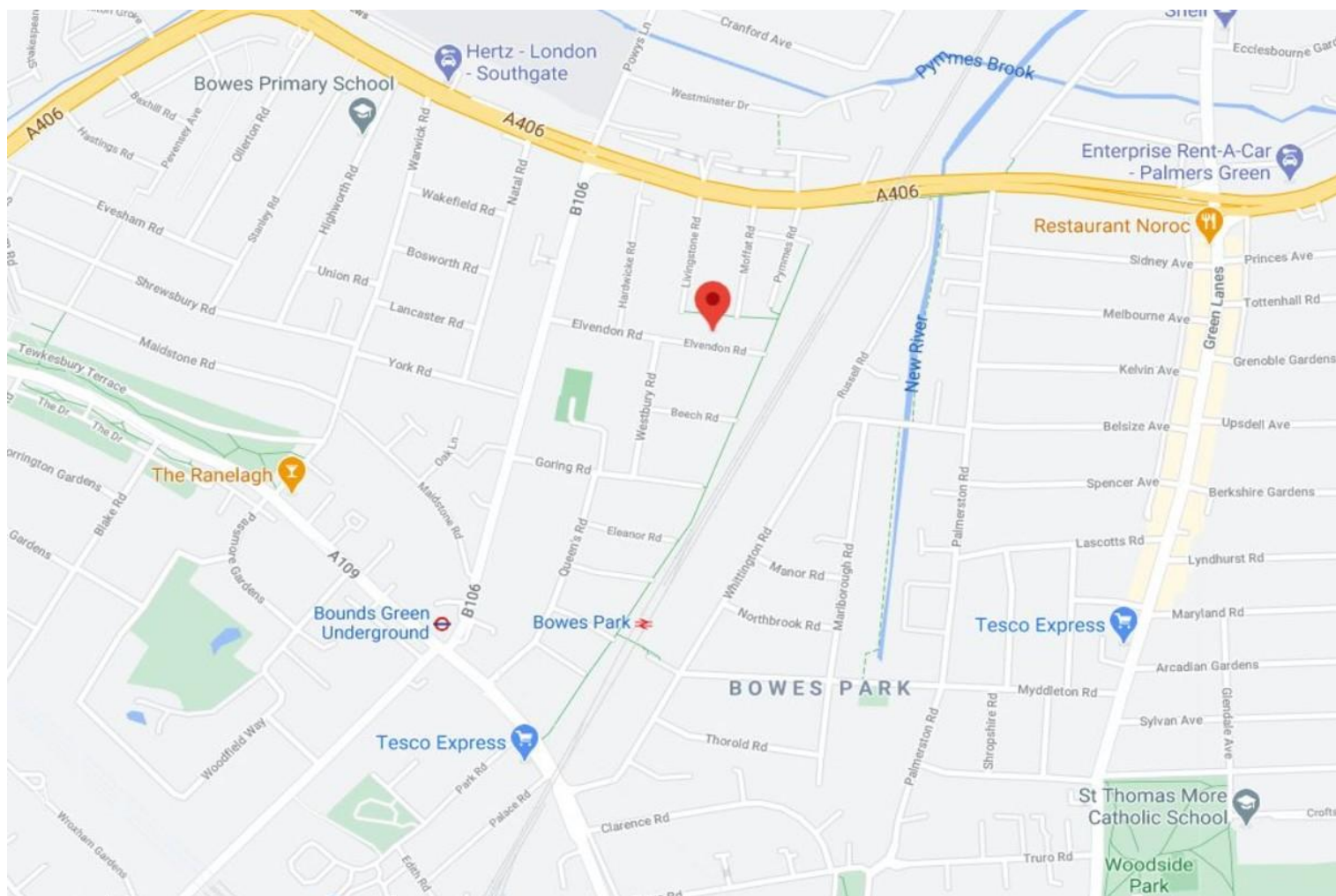
Elvendon Road

Approximate Gross Internal Floor Area : 23.40 sq m / 251.87 sq ft

Mezzanine Floor Area : 14.30 sq m / 153.92 sq ft

Illustration for identification purposes only, measurements are approximate, not to scale.

Produced By www.myphotogenie.co.uk



Local Authority:
Enfield London Borough Council

Viewings:
Strictly by appointment via
HOBARTS ESTATE AGENTS

Council Tax Band:
Band A

Contact:
3 Crescent Road
Alexandra Park
N22 7RP

0208 889 4322
rent@hobartsproperty.co.uk
www.hobarts.co.uk

rightmove

PrimeLocation.com

homes24.co.uk

Zoopla.co.uk

propertyfinder.com



These property details, including measurements, floor plans and items depicted in photographs etc. are intended only as a brief guide to prospective purchasers and are not intended to be relied upon for any purpose whatsoever. Any interested party should satisfy themselves by inspection or otherwise as to the correctness of each statement contained in these details.