



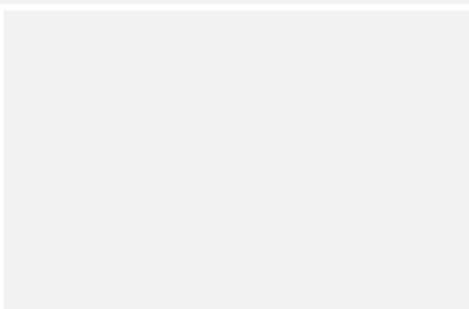
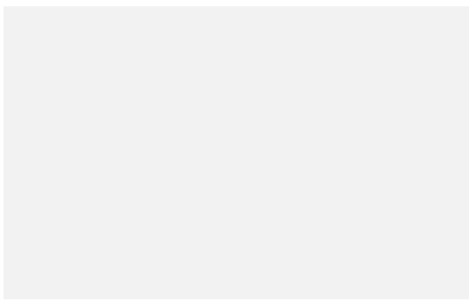
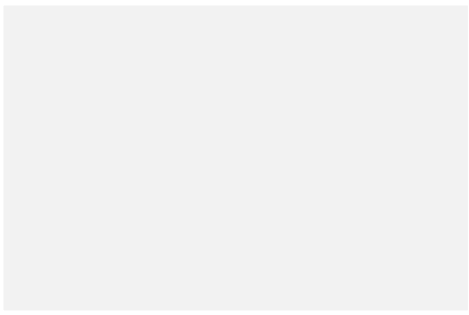
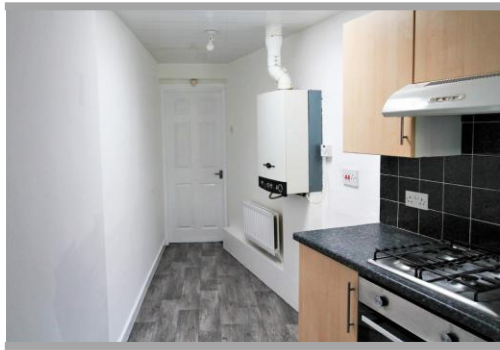
Renwick Road | Blyth | NE24 2NX

**For Sale**

**£55,000**

- Two Bedrooms
- End Terraced House
- Gas Central Heating
- Double Glazing
- Vacant Possession
- Viewings Recommended

**Energy Efficiency Rating**



## Property Description

ENTRANCE HALL Staircase to the first floor.

LOUNGE Window, radiator.

KITCHEN Fitted wall and base units with work surfaces, sink unit, integrated electric oven and gas hob with an extractor hood, part tiled walls, boiler, window.

FIRST FLOOR LANDING Doors leading to:

BEDROOM ONE Window, radiator.

BEDROOM TWO Window, radiator.

BATHROOM White three piece suite comprising of a panelled bath, pedestal wash hand basin, low level WC, part tiled walls.

PRIVATE REAR YARD Paved with gated access.

## Viewing Arrangements

Strictly by appointment

## Contact Details

[www.safeandsecureproperties.co.uk](http://www.safeandsecureproperties.co.uk)  
24-25 Westbourne Terrace  
Houghton le Spring  
DH4 4QT

See full details at: [www.safeandsecureproperties.co.uk](http://www.safeandsecureproperties.co.uk)

# EPC Rating

%epcGraph\_c\_1\_500%

## **Floor Plan (if required)**

Awaiting  
Image

See larger images at: [www.safeandsecureproperties.co.uk](http://www.safeandsecureproperties.co.uk)

Contact Lisa or Debbie on **0191 385 4477**

[lisa@safeandsecureproperties.co.uk](mailto:lisa@safeandsecureproperties.co.uk)

[debbie@safeandsecureproperties.co.uk](mailto:debbie@safeandsecureproperties.co.uk)

Agents Note: Whilst every care has been taken to prepare these sales particulars, they are for guidance purposes only. All measurements are approximate are for general guidance purposes only and whilst every care has been taken to ensure their accuracy, they should not be relied upon and potential buyers are advised to recheck the measurements.