

REAL  
ESTATE



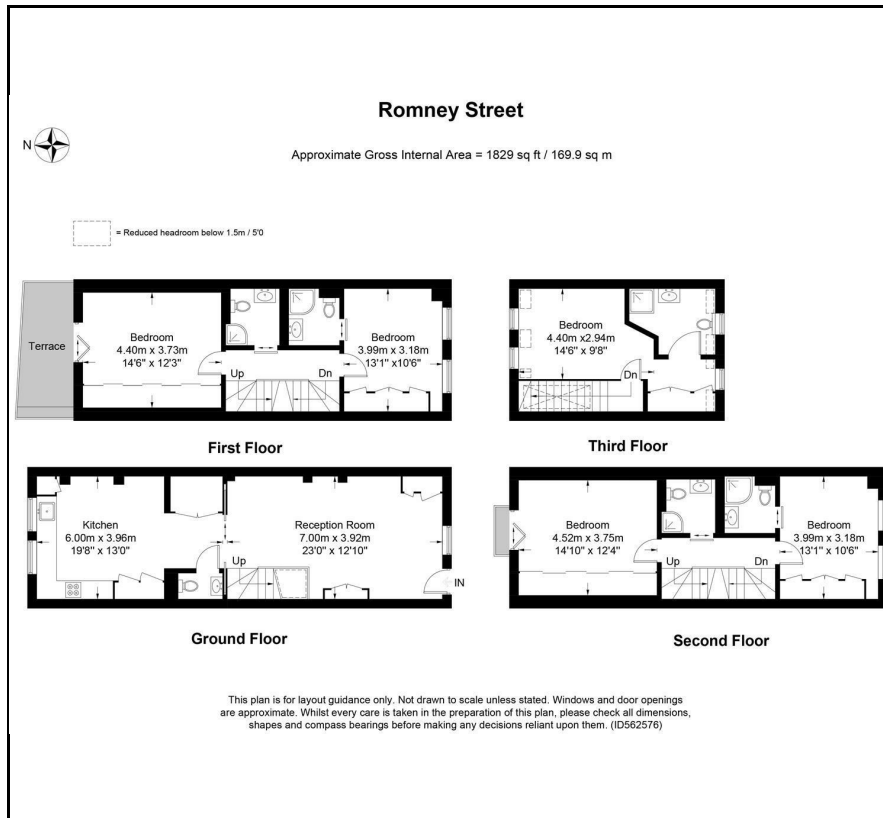
## 52 Romney Street, , London SW1P 3RE

This 5-bathroom townhouse is situated on a quiet street at the heart of Westminster with spectacular views on St. John's Church in Smith's Square. The accommodation has just been renovated to the highest standards and comprises: an en-suite master bedroom with built-in storage unit, 4 additional bedrooms (two of them en-suite), and a living room with a fully-fitted modern kitchen accessing a private outside terrace.

The townhouse is perfect for families looking to settle in a quiet and tranquil environment with excellent connectivity and access to London's most renowned parks, landmarks and neighbourhoods including Tate Britain, Westminster Abbey, the Houses of Parliament, Buckingham Palace, St. James's Park and Hyde Park. The nearest underground stations include Westminster, St. James's Park and Victoria.

Asking Price £3,700,000

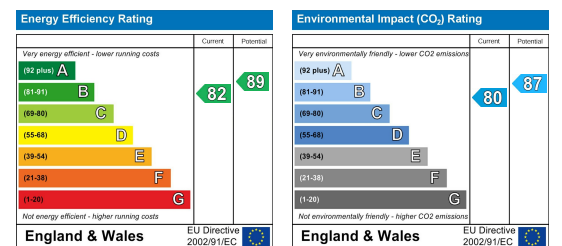
## Floor Plan



## Area Map



## Energy Efficiency Graph



## Viewing

Please contact our AZ Real Estate Office on 0203 871 4077 if you wish to arrange a viewing appointment for this property or require further information.



These particulars, whilst believed to be accurate are set out as a general outline only for guidance and do not constitute any part of an offer or contract. Intending purchasers should not rely on them as statements of representation of fact, but must satisfy themselves by inspection or otherwise as to their accuracy. No person in this firm's employment has the authority to make or give any representation or warranty in respect of the property.

91 Wimpole Street, London, W1J 0EF  
T: 0203 871 4077 | broker@azrealestate.eu