



jordanfishwick

LEIGH
Mather House



Mather House, Leigh
WN7 2PW
 Price £229,950



The Property

Online Video Tour.....<https://youtu.be/TvMTJvvLO6M>

Last Few Remaining....A Grade II Listed cotton spinning mill built in 1882 on the north bank of the Bridgewater Canal, Mather Lane Mill was originally designed by Bradshaw and Gas. Its square plan, flat roof and internal engine house were modern features of their time; these alongside the mill's classical elevations have been beautifully preserved as part of its restoration by JP McGuire Developments.

What some of the new residents are loving about Mather House, 'Great Concierge reception with soft sofas, large communal kitchen and entertaining room available for hire

and the on-site Gym which comes free for all residents. Not forgetting the gated parking, high tech video intercoms and secure coded floor secure access.

Prices start from £169,950 to £229,950 for two bedrooms of

Directions

A Grade II Listed cotton spinning mill built in 1882 on the north bank of the Bridgewater Canal, Mather Lane Mill was originally designed by Bradshaw and Gas. Located 13 miles from Manchester City centre and 22 miles from Liverpool



- Penthouse Apt
- Dual Aspect Stunning Views
- 1250 sq.ft Of Outside Space
- Large Roof Terrace
- Luxury Appliances
- Parking
- Gym & Communal Lobby

Postcode - WN7 2PW

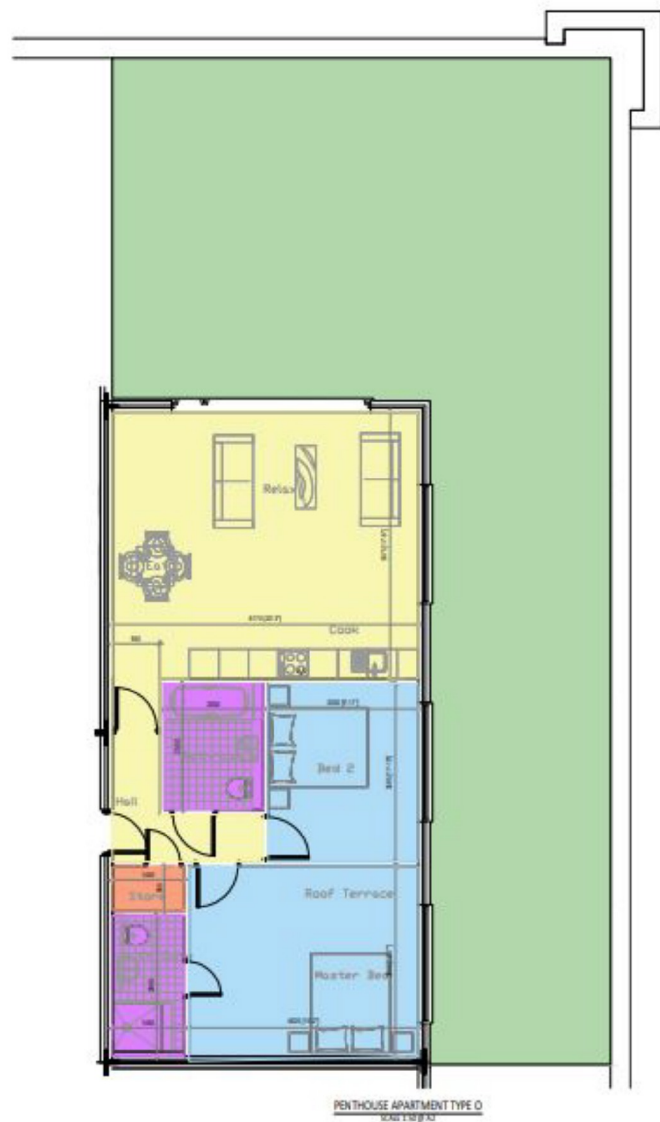
EPC Rating -

Floor Area - 860 sq ft

Local Authority - Wigan Council

Council Tax - Band TBC





PENTHOUSE APARTMENT TYPE D

BATHROOM = 5.1m² / 54.81SQ.FT
 EN SUITE = 4.2m² / 45.29SQ.FT
 STORE = 1.2m² / 12.99SQ.FT
 RELAX / COOK = 38.6m² / 415.48SQ.FT
 MASTER BEDROOM = 17.9m² / 192.69SQ.FT
 BEDROOM 2 = 10.9m² / 116.79SQ.FT
 ROOF TERRACE = 117m² / 1259.92SQ.FT

TOTAL SQ.FT = 294.8m² / 3186.49SQ.FT



These particulars are believed to be accurate but they are not guaranteed and do not form a contract. Neither Jordan Fishwick nor the vendor or lessor accept any responsibility in respect of these particulars, which are not intended to be statements or representations of fact and any intending purchaser or lessee must satisfy himself by inspection or otherwise as to the correctness of each of the statements contained in these particulars. Any floorplans on this brochure are for illustrative purposes only and are not necessarily to scale.

Offices also at:
 Chorlton | Didsbury | Disley | Glossop | Hale | Macclesfield | Manchester | Sale | Wilmslow | Withington

68 The Arches, Whitworth Street West, Manchester, M1

0161 833 9499

manchester@jordanfishwick.co.uk
 www.jordanfishwick.co.uk