



Stephenson Close, Bow, E3

BUTLER & STAG



Spanning over 775 Sq. ft and being situated on the top floor of this striking modern development is this spacious two bedroom apartment.



Leasehold

- Allocated Parking Space
- Top Floor
- Duel Aspect Apartment
- 775 Sq. Ft
- Over Sized Balcony
- Bromley By Bow Tube Station Close By
- Two Bedrooms
- Chain Free

The property boasts a contemporary finish and a wealth of natural light aided by dual aspect windows and south facing aspect.

Comprising a generous sized living/entertaining space which is semi open plan to a sleek modern fitted kitchen and French door/s leading to a oversized private balcony, two double bedrooms and stylish bathroom.

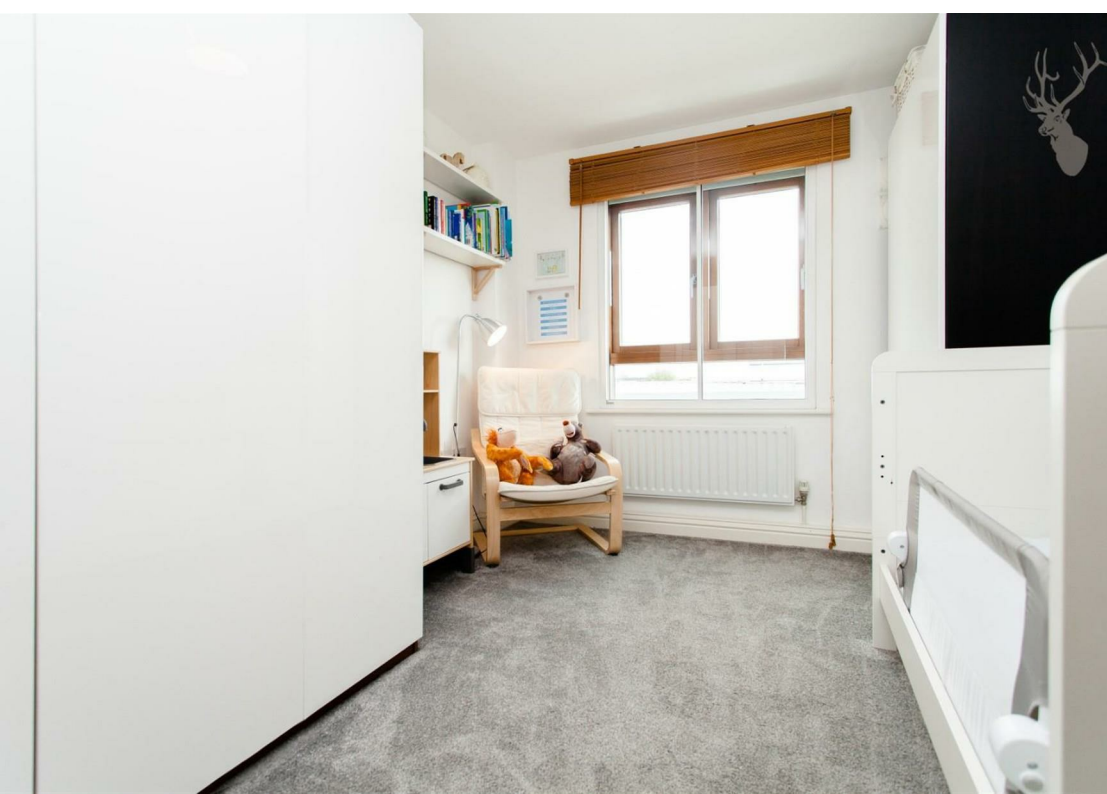
Stephenson Close is well located for Bromley By Bow (District and Hammersmith & City) and Bow Church DLR meaning access into the City, Canary Wharf and West End is straightforward.

3D Virtual Tour - This property has a fully immersive walk through.

Butler & Stag is delighted to offer Virtual Viewings to all of our residential clients. This innovative 3D property technology allows prospective buyers or tenants to immerse themselves with a virtual walk through of each of our properties 24 hours a day, 7 days a week, whilst in the comfort of their home, work or wherever they may be.

Like what you see? Please contact us for more information and to arrange a physical viewing

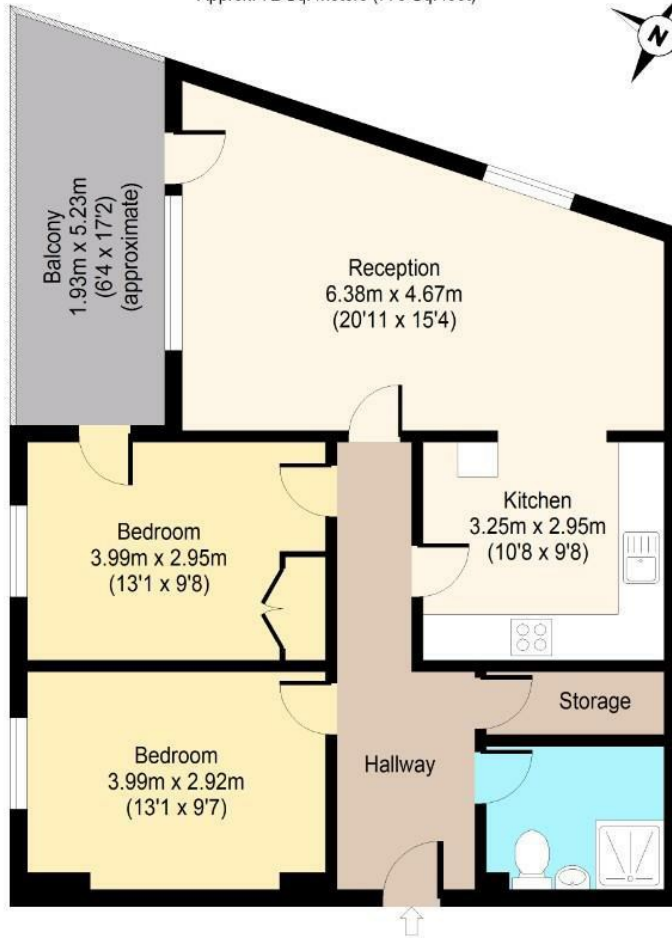




Stephenson Close, E3

Fifth Floor

Approx. 72 Sq. meters (775 Sq. feet)



Total area (Including Balcony): approx. 82 Sq. meters (883 Sq. feet)

Total area (Excluding Balcony): approx. 72 Sq. meters (775 Sq. feet)

For illustration purposes only - not to scale

IMPORTANT NOTICE - These particulars have been prepared in good faith and they are not intended to constitute part of an offer or contract. We have not performed a structural survey on this property and the services, appliances and specific fittings have not been tested. All photographs, measurements, floor plans and distances referred to are given as a guide and should not be relied upon.

BUTLER & STAG

☎ 01992 667666

🏠 4 Forest Drive, Theydon Bois, Essex, CM16 7EY

✉ theydon@butlerandstag.com

www.butlerandstag.uk