



SPENCER & SENER
Integrity ♦ Honesty ♦ Trust



Asking Price Of £750,000

34 Park Road
New Barnet
Barnet
EN4 9QF

EPC Rating '45'

Council Tax Band

- Four Bedrooms
- Semi Detached Family Home
- Front Reception Room
- Kitchen/Breakfast Room
- Conservatory
- Current EPC Rating E
- Two Bathrooms
- 150 Foot Approximately Rear Garden

Park Road, New Barnet, Barnet, EN4

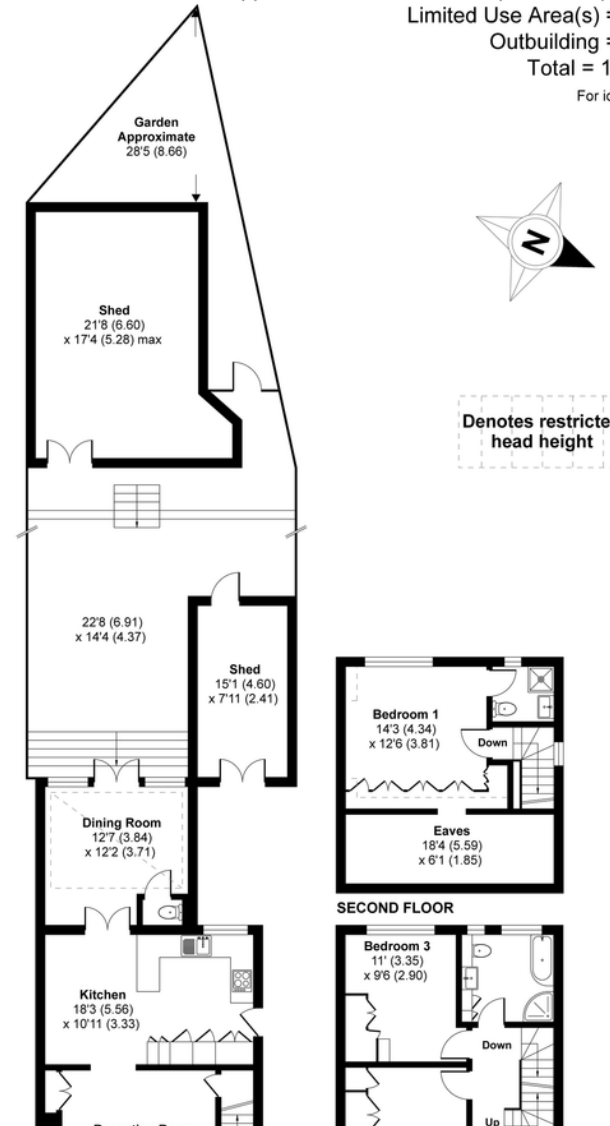
Approximate Area = 1374 sq ft / 128 sq m (includes garage)

Limited Use Area(s) = 140 sq ft / 13 sq m

Outbuilding = 443 sq ft / 41 sq m

Total = 1957 sq ft / 182 sq m

For identification only - Not to scale



Agents Note: Whilst every care has been taken to prepare these particulars, they are for guidance purposes only. All measurements are approximate and for general guidance purposes only and whilst every care has been taken to ensure their accuracy, they should not be relied upon and potential buyers/tenants are advised to recheck the measurements