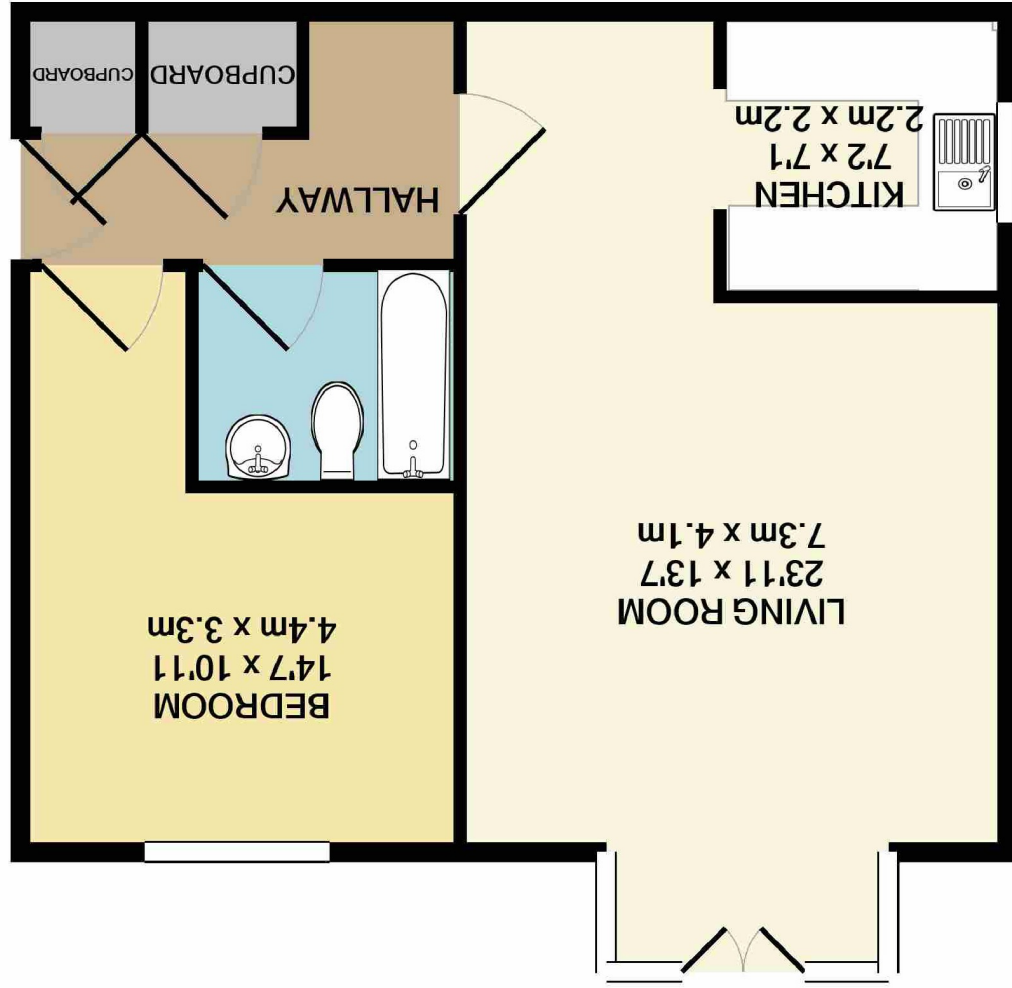


These particulars are believed to be accurate but they are not guaranteed and do not form a contract. Neither Jordan Fishwick nor the vendor or lessor accept any responsibility in respect of these particulars, which are not intended to be statements or representations of fact and any intending purchaser or lessee must satisfy himself by inspection or otherwise as to the correctness of each of the statements contained in these particulars. Any floorplans on this brochure are for illustrative purposes only and are not necessarily to scale.

TOTAL APPROX. FLOOR AREA 534 SQ.FT. (49.6 SQ.M.)  
Measurements are approximate. Not to scale. Illustrative purposes only  
Made with Metropix ©2020





Upper Park Road, Victoria  
Park M14 5SL  
Guide price £130,000



### The Property

A well presented top floor apartment, situated in the leafy suburb of Victoria Park close to the City centre, universities and the MRI, a double bedroom apartment suitable for a number of buyers including the first time buyer or buy to let landlord. In brief the property comprises of entrance hall way with two built in storage cupboards, large living room with Juliette balcony, separate fitted kitchen, double bedroom and bathroom. The property also benefits from gas central heating, double glazing, private residents parking, lift access and great views. Viewings are highly recommended to appreciate the lovely internal aspects of this flat.

### Directions

Postcode M14 5SL

- A double bed top floor apartment
- Large living/dining room
- Gas central heating and double glazing
- Lift access & parking
- Large communal gardens
- Close to universities and MRI

**Postcode** - M14 5SL

**EPC Rating** - E

**Floor Area** - 534 sq ft

**Local Authority** - Manchester City Council

**Council Tax** - Band A

