



Chiswick High Road, London, W4 5RG

£599,999

**WHITMAN & CO.**

SALES · LETTINGS · COMMERCIAL

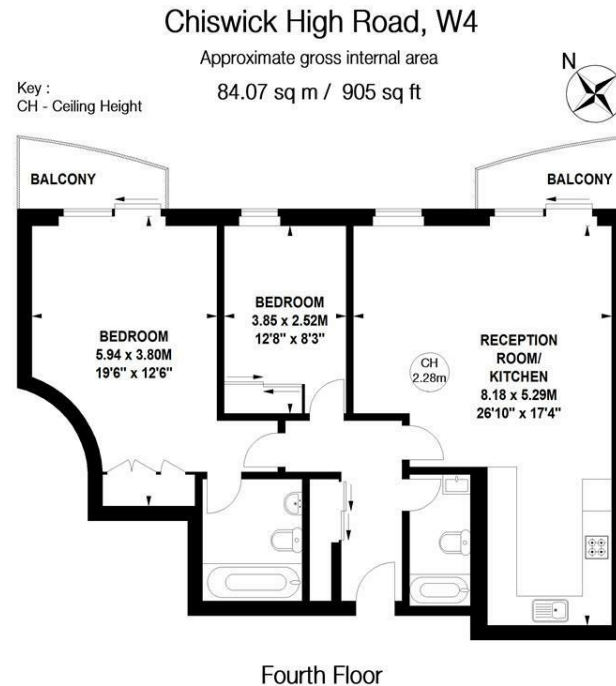


- Spacious two bedroom apartment
- Overlooking Gunnersbury Triangle Nature Reserve
- Close to Chiswick High Road and Gunnersbury Station
- Balconies off principle rooms
- Secure allocated underground car parking
- No chain

Tenure - Leasehold  
 Lease length - 129 years remaining  
 Ground Rent - £150 pa  
 Service Charge - £2920 pa  
 Local Authority - Hounslow  
 Council Tax - Band F

## THE PROPERTY

A spacious two-bedroom executive apartment with balconies off principle rooms overlooking Gunnersbury Triangle Nature Park and with the added benefit of secure allocated underground parking. Accommodation comprises; master bedroom with luxury ensuite and balcony, second double bedroom, luxury bathroom, 17' reception room with balcony, fully integrated kitchen, automatic lift, video entry phone, secure allocated underground parking. Ideally situated within close proximity of tube, rail, road and bus routes as well as the extensive facilities on Chiswick High Road. No chain.



Not to scale, for guidance only and must not be relied upon as a statement of fact.  
 All measurements and areas are approximate only

## SITUATION



5-7 Turnham Green Terrace, Chiswick, London, W4 1RG

Tel 020 8747 8800

E-mail [sales@whitmanandco.com](mailto:sales@whitmanandco.com)

Website [www.whitmanandco.com](http://www.whitmanandco.com)