

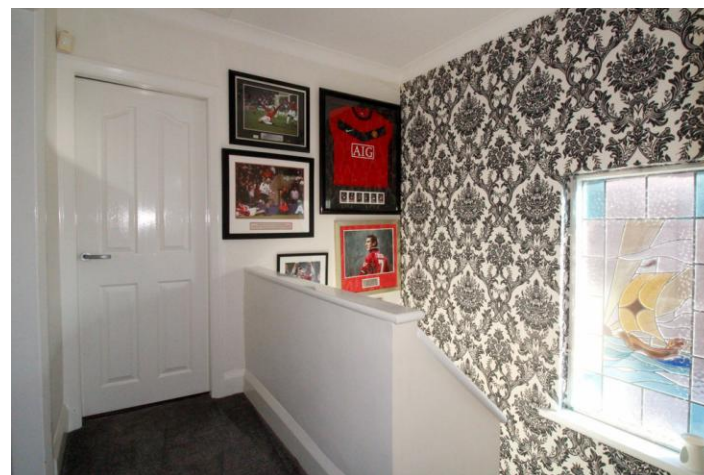


- Three Bedroom Semi Detached Home with Annex
- Bay Fronted Lounge, Open Plan Dining Kitchen
- Utility Room, Three Good Sized Bedrooms
- Separate Annex with Bedroom Area, Lounge and Shower Room

Devonshire Road, Bispham, Blackpool, FY2

£239,950

A REMARKABLE SEMI DETACHED HOME WITH A DIFFERENCE - MODERN OPEN PLAN LIVING AT ITS FINEST WITH A STYLISH KITCHEN OPENING ONTO A DINING AREA WITH BI FOLDING DOORS - BAY FRONTED LOUNGE - THREE BEDROOMS - MODERN FOUR PIECE BATHROOM - ANNEX TO REAR CREATING SEPERATE LIVING WITH LOUNGE / BEDROOM AREA & SHOWER ROOM



Property Description

PORCH

Tiled flooring, door into

ENTRANCE HALL

Laminate flooring, radiator, window to front and stairs to first floor.

GROUND FLOOR WC

A two piece suite comprising of low flush WC and pedestal wash hand basin. Splash back tiling, laminate flooring and double glazed window to side.

LOUNGE

15' 8" x 12' 11" (4.79m x 3.95m) Double glazed bay window to front, fitted carpet, radiator and living flame gas fire on marble effect hearth and back with matching surround.

KITCHEN DINING ROOM

20' 2" x 17' 10" (6.16m x 5.45m) A range of modern high gloss wall and base units with complimentary work surfaces over, space for double 'Range' Style cooker with extractor above, space for American style fridge freezer, inset sink unit with mixer tap and drainer, integrated dishwasher and kick board heater all fitted to breakfast island with dropped lighting. Two vertical radiators, laminate flooring and Bi Folding doors onto the rear garden. Door into

UTILITY ROOM

7' 3" x 5' 4" (2.23m x 1.65m) Work surfaces, plumbing for washing machine and drainer, Laminate flooring.

LANDING

Double glazed window to side, fitted carpet and access to all rooms.

BEDROOM ONE

15' 7" x 11' 9" (4.75m x 3.59m) Double glazed bay window to front, fitted carpet and radiator.



BEDROOM TWO

15' 1" x 11' 7" (4.60m x 3.55m) Double glazed window to rear, fitted carpet, radiator and fitted wardrobes.

BEDROOM THREE

9' 11" x 7' 10" (3.04m x 2.39m) Double glazed bay window to front, fitted carpet and radiator.

BATHROOM

A four piece modern bathroom suite comprising of low flush WC, pedestal wash hand basin, panelled bath with centre taps with mixer shower and tiled step in shower cubicle with water fall style shower. Double glazed opaque window to rear, tiled flooring and tiled walls.



EXTERIOR FRONT

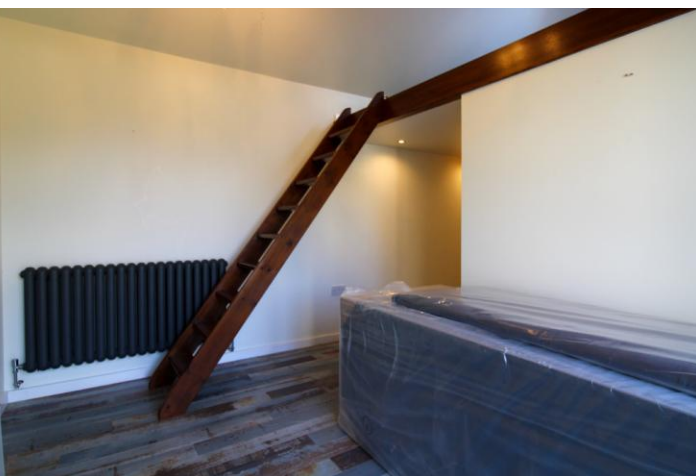
Ample parking via driveway, raised borders with lawn and shrub borders.

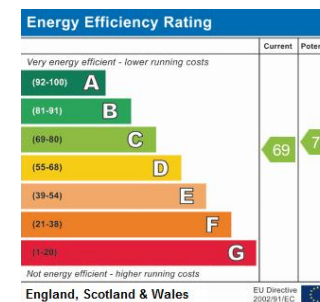
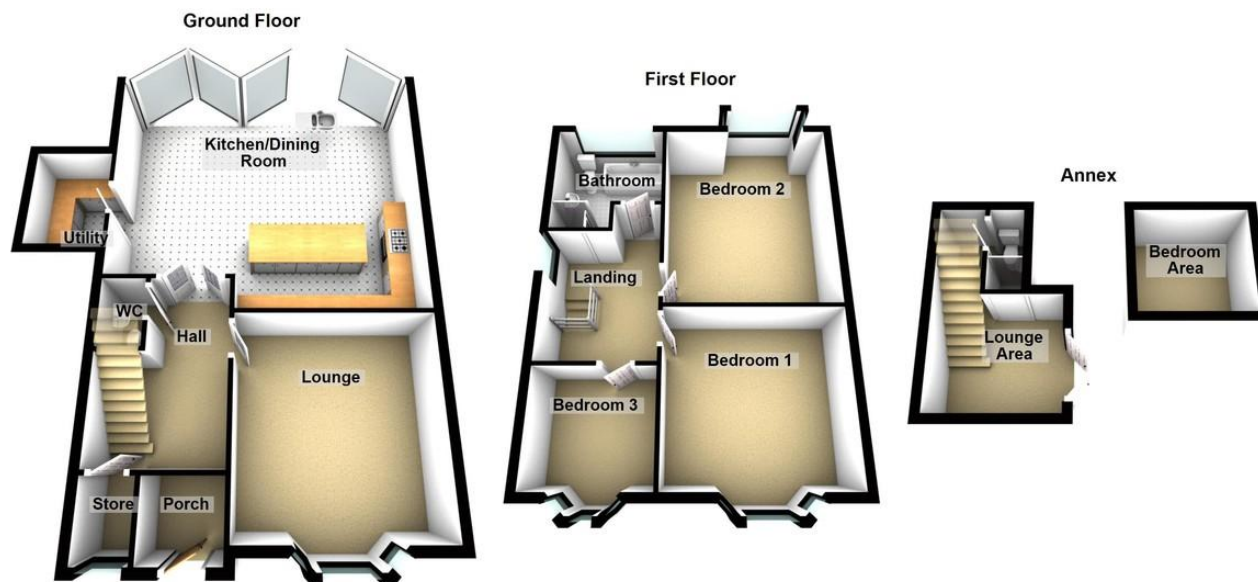
EXTERIOR REAR

Enclosed rear garden with lawn area and paved patio area with flower and shrub borders.

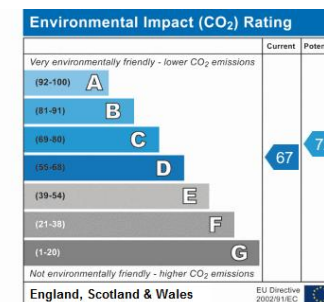
ANNEX

13' 10" x 10' 10" (4.22m at longest x 3.31m at widest) A 'L' shaped lounge with lino flooring and radiator with built in wardrobe space and access to a three piece shower room with WC, pedestal wash hand basin and shower cubicle. A Mezzanine style bedroom area is on offer and access via open staircase in the lounge.





Address:
Devonshire Road, Bispham, FY2



1B Lancaster House, Amy
Johnson Way, Blackpool,
Lancashire, FY4 2RP

www.romanjamesestates.co.uk
01253 978888
info@romanjamesestates.co.uk

Agents Note: Whilst every care has been taken to prepare these sales particulars, they are for guidance purposes only. All measurements are approximate are for general guidance purposes only and whilst every care has been taken to ensure their accuracy, they should not be relied upon and potential buyers are advised to recheck the measurements