



LOTUS RESIDENTIAL
SALES, LETTINGS AND PROPERTY MANAGEMENT



Leicester Street, North Evington,
Off Green Lane Road,
Leicester, LE5 3RF

Asking Price Of £250,000

Property Features

- 3 BEDROOM MID-TERRACE
- NORTH EVINGTON, OFF GREEN LANE RD LE5
- PLANNING PERMISSION AND CERTIFICATION
- CLOSE TO LOCAL AMENITIES
- OWNER OCCUPIED FAMILY HOME
- FITTED KITCHEN WITH DISHWASHER
- LARGE GARDEN

Full Description

FULL DESCRIPTION

Lotus Residential are delighted to bring to the market this well presented three bedroomed mid-terrace family home offering planning consent and certification for a further 10m extension. Conveniently located in the heart of the much sought after North Evington, just off Green Lane Road, placed ideally for local amenities. The property benefits from a fairly new combiner's boiler, newly refitted kitchen, two reception rooms, large garden, which adds to the generous sized bedrooms and ensuite loft room.

LIVING ROOM

12' 7" x 11' 0" (3.84m x 3.37m)

UPVC double glazed bay window to front, single radiator with thermostatic valve wall mounted, laminate flooring, open plan to:

DINING ROOM

12' 5" x 11' 0" (3.8m x 3.37m)

UPVC double glazed window to rear aspect, single radiator double radiator with thermostatic valve wall mounted, wooden laminate flooring, door to:

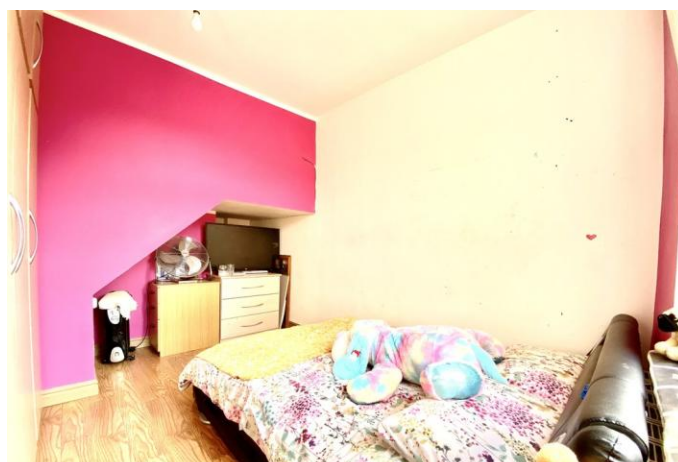
Stairs to first floor landing with under-stairs storage cupboard, hardwood courtesy door to:

KITCHEN

12' 5" x 5' 9" (3.8m x 1.77m)

Fitted with a matching range of base and eye level units with worktop space over, stainless steel sink with draining board, stainless steel mixer tap and tiled splashbacks, integrated dishwasher, space for fridge/freezer with built-in cooker, built-in, eye level, built-in oven, built-in four ring hob, uPVC double glazed window to side aspect, uPVC double glazed side door to side.

FIRST FLOOR





Ground Floor

Approx. 38.4 sq. metres (413.0 sq. feet)



First Floor

Approx. 35.7 sq. metres (384.1 sq. feet)



Second Floor

Approx. 24.6 sq. metres (264.8 sq. feet)



Total area: approx. 98.7 sq. metres (1061.9 sq. feet)

1-3 Upper King Street
Leicester
Leicestershire
LE1 6XF

www.lotusresidentialuk.com
info@lotusresidentialuk.com
0116 216 9112

Agents Note: Whilst every care has been taken to prepare these sales particulars, they are for guidance purposes only. All measurements are approximate are for general guidance purposes only and whilst every care has been taken to ensure their accuracy, they should not be relied upon and potential buyers are advised to recheck the measurements