



Westminster Bridge Road, Waterloo se1

Modern 2 bedroom apartment with balcony & parking

£545 Per week | Unfurnished



LORNHAM
London

This two double bedroom apartment with over 1,000 sqft in this highly regarded portered development is located close to Waterloo and the South Bank. Situated on the 2nd floor the open plan reception/living area opening out onto a balcony offers views over the internal communal garden.

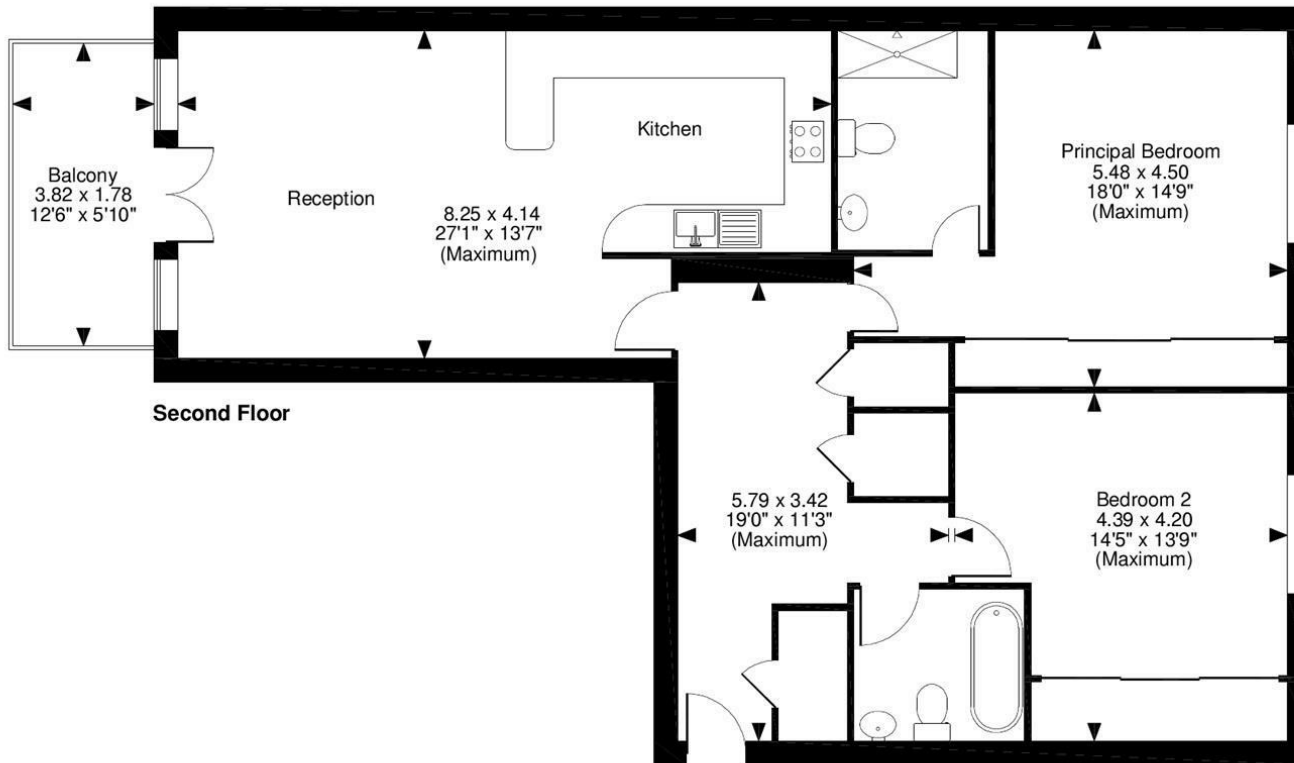
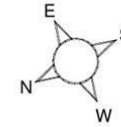
Westminster Square is a sought after modern development featuring 24hr portage, CCTV, secure underground parking and is situated 2mins from Lambeth North tube station.

- *2 Bedroom Apartment*
- *Available Immediately*
- *Porter*
- *Underground Parking*





Walpole House, SE1
Approximate Gross Internal Area
1025 Sq Ft/95 Sq M
Balcony external area = 73 Sq Ft/7 Sq M



FOR ILLUSTRATIVE PURPOSES ONLY - NOT TO SCALE

The position & size of doors, windows, appliances and other features are approximate only.
© ehouse. Unauthorised reproduction prohibited. Drawing ref. dig/8438694/TML

Energy Efficiency Rating		
	Current	Potential
Very energy efficient - lower running costs		
(92 plus) A		
(81-91) B		
(69-80) C	70	73
(55-68) D		
(39-54) E		
(21-38) F		
(1-20) G		
Not energy efficient - higher running costs		
England & Wales	EU Directive 2002/91/EC	



LORNHAM
London

For more information please contact
Dominic Wertheimer

Lornham
7 New Quebec Street
London W1H 7RH

020 7724 4777
dwertheimer@lornham.com

www.lornham.com