

The Grange

2 bedroom apartments.



Retaining all their Victorian splendour these elegant and spacious, apartments are the perfect place to enjoy life. With a contemporary interior and premium specification throughout, each of these luxury apartments are truly unique and have been crafted with meticulous attention to detail.



Simply Enchanting.

**Welcome to The Grange,
a carefully considered
collection of stylish and
spacious 2 bedroom
apartments housed in the
exquisite historic building,
Copsewood Grange.**

Built in 1872 by James Hart, a ribbon manufacturer, this Victorian splendour was later sold to Peel Conner Telephone (which became the General Electric Company, GEC) in the 1920s.

In addition to its rich industrial heritage Copsewood Grange also has connections with the movie industry. In 1968 a famous scene in *The Italian Job* starring Michael Caine was filmed here.

An interior that's equally as impressive.

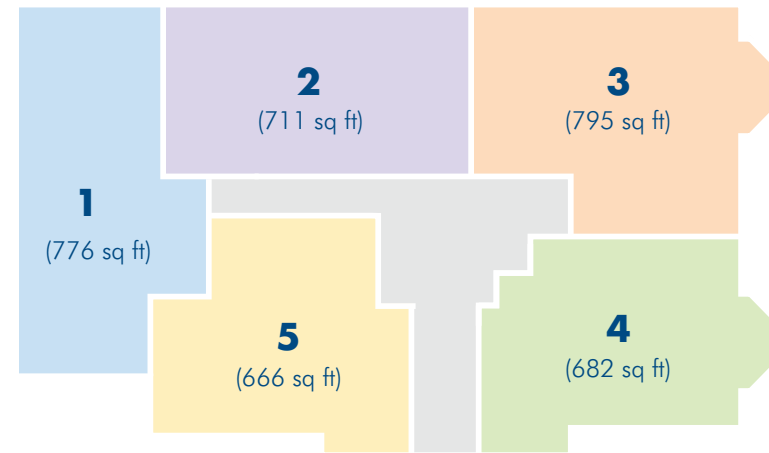
We're delighted to give you the exclusive opportunity to call this striking building, your home.

Renovated to an impressive standard and retaining its original exterior detailing, the historic charm of the building remains intact.

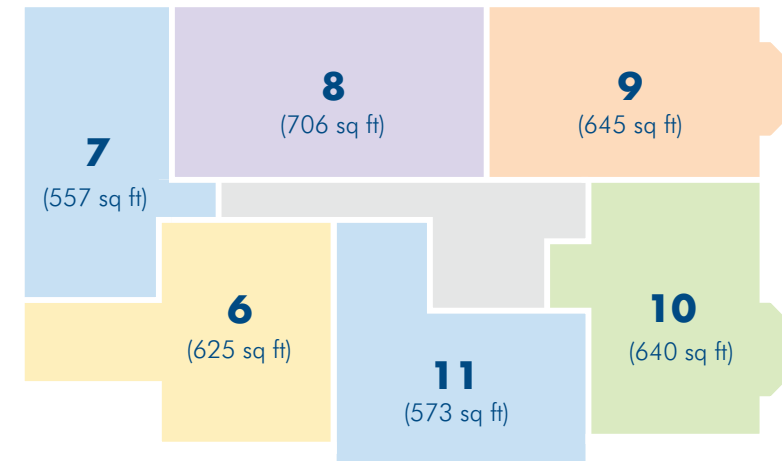
Internally, each apartment has been designed to the highest of standards, with generously spaced living areas completed with a premium specification. From the luxury Amtico flooring, elegant kitchens with integrated NEFF appliances to the fittings from leading partners such as Porcelanosa and Villeroy and Boch, luxury is standard at The Grange.

Accommodating wonderful views, dreamy bedrooms and impeccable bathrooms these sought after apartments boast all the impressive quality features you'd expect from a brand new Morris home.

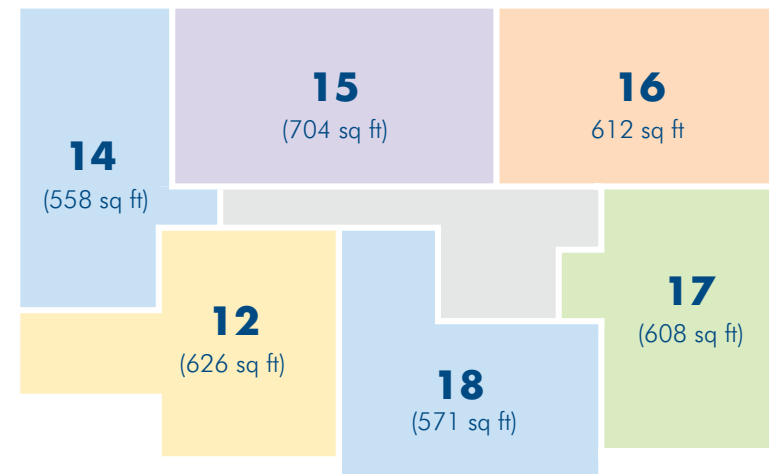




Ground Floor

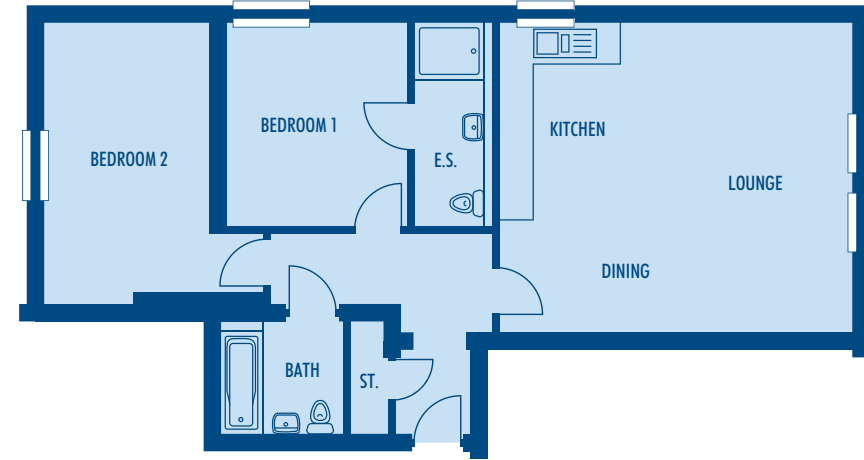


First Floor



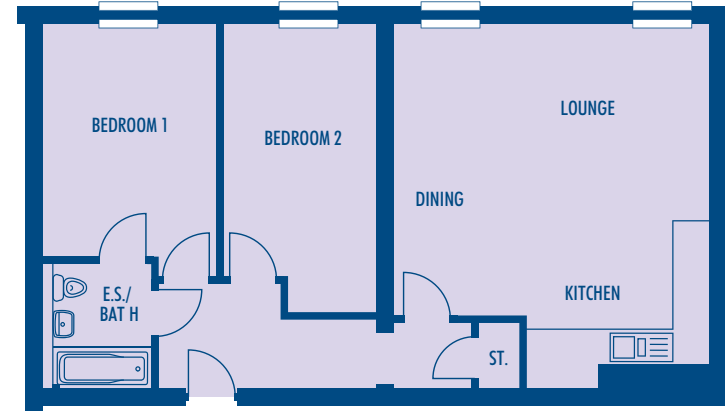
Second Floor





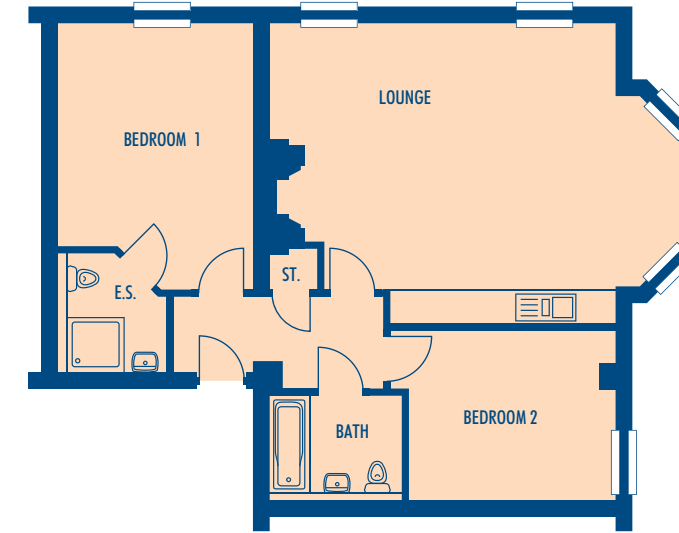
Apartment 1

Room	Size
Lounge/Kitchen/ Dining	5750 x 5015*mm 18'10" x 16'5"*
Bedroom 1	3090 x 3250mm 10'2" x 10'8"
Ensuite	1325 x 3250mm 4'4" x 10'8"
Bedroom 2	2790 x 4550*mm 9'2" x 14'11"*
Bathroom	2000 x 1750mm 6'7" x 5'9"



Apartment 2

Room	Size
Lounge/Kitchen/ Dining	5900* x 5300*mm 19'4"* x 17'5"*
Bedroom 1	3700 x 2900*mm 12'2" x 9'6"*
Ensuite/Bathroom	2075 x 1650mm 6'10" x 5'5"
Bedroom 2	4000 x 2575mm 13'1" x 8'5"



Apartment 3

Room	Size
Lounge/Kitchen/ Dining	5100* x 6675mm 16'9"* x 21'11"
Bedroom 1	4450* x 3450*mm 14'7"* x 11'4"*
Ensuite	1950* x 1920*mm 6'5"* x 6'4"*
Bedroom 2	3000* x 3800mm 9'10"* x 12'6"
Bathroom	1700 x 2300mm 5'7" x 7'7"



Apartment 4

Room	Size
Lounge/Kitchen/ Dining	6600 x 4000*mm 21'8" x 13'1"*
Bedroom 1	4440* x 3000*mm 14'5"* x 13'1"*
Ensuite	1775 x 1700mm 5'10" x 5'7"
Bedroom 2	3525 x 2950mm 11'7" x 9'8"
Bathroom	1875 x 2300mm 6'2" x 7'7"

*Denotes maximum room dimensions. Room sizes are approximate. Kitchen and bathroom layouts are indicative. These plans are correct at time of going to press, but may be subject to change during construction. Please ensure that you check for specific plot details.





Apartment 5

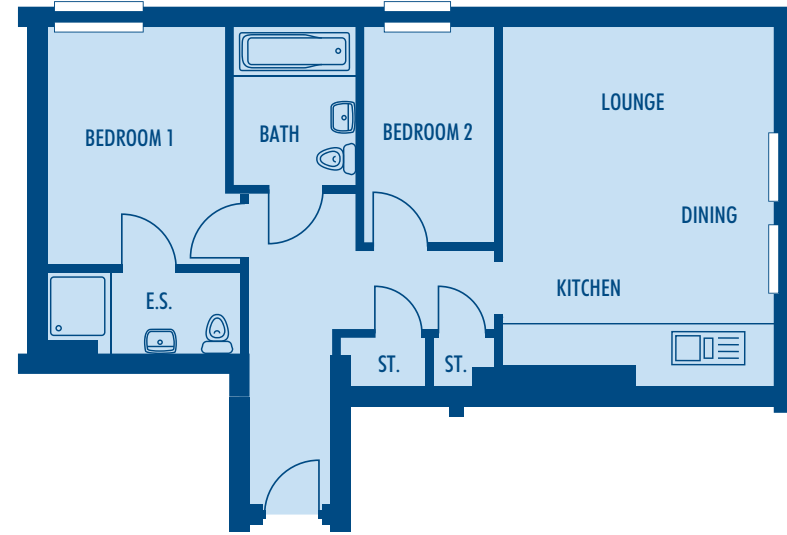
Room	Size
Lounge/Kitchen/ Dining	7500* x 4635*mm 24'7"* x 15'2"*
Bedroom 1	4715* x 2945*mm 15'6"* x 9'8"*
Ensuite	1750* x 1800*mm 5'9"* x 5'11"*
Bedroom 2	4000* x 2400*mm 13'1" x 7'10"*
Bathroom	1900 x 1800mm 6'3" x 5'11"



*Denotes maximum room dimensions. Room sizes are approximate. Kitchen and bathroom layouts are indicative. These plans are correct at time of going to press, but may be subject to change during construction. Please ensure that you check for specific plot details.



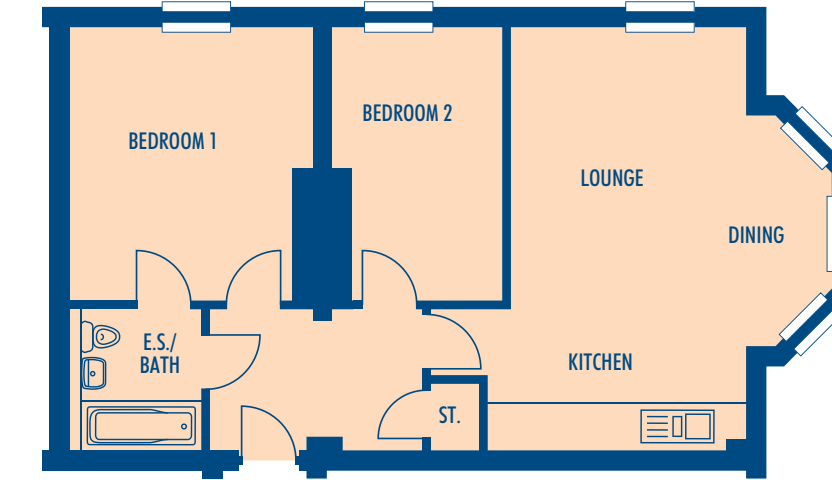
Apartment 6		
Room	Size	
Lounge/Kitchen/ Dining	5650 x 3700mm	18'6" x 12'2"
Bedroom 1	2525 x 4540mm	8'3" x 14'11"
Ensuite	2600 x 1300mm	8'6" x 4'3"
Bedroom 2	3575 x 2050mm	11'9" x 6'9"
Bathroom	1700 x 2050mm	5'7" x 6'9"



Apartment 7		
Room	Size	
Lounge/Kitchen/ Dining	3710 x 4970*mm	12'2" x 16'4"*
Bedroom 1	2565 x 3195mm	8'5" x 10'6"
Ensuite	2880 x 1200*mm	9'5" x 3'11"*
Bedroom 2	1900 x 2875mm	6'3" x 9'5"
Bathroom	1750 x 2075mm	5'9" x 6'10"



Apartment 8		
Room	Size	
Lounge/Kitchen/ Dining	5900 x 5300mm	19'4" x 17'5"
Bedroom 1	3700 x 2900*mm	12'2" x 9'6"*
Bath/Ensuite	2075 x 1650mm	6'10" x 5'5"
Bedroom 2	4000 x 2600mm	13'1" x 8'9"



Apartment 9		
Room	Size	
Lounge/Kitchen/ Dining	5900 x 4400*mm	19'4" x 14'5"*
Bedroom 1	3760 x 3400*mm	12'0" x 11'3"*
Bath/Ensuite	2000 x 1825mm	6'7" x 6'0"
Bedroom 2	3770 x 2500mm	12'4" x 8'2"

*Denotes maximum room dimensions. Room sizes are approximate. Kitchen and bathroom layouts are indicative. These plans are correct at time of going to press, but may be subject to change during construction. Please ensure that you check for specific plot details.





Apartment 10

Room	Size
Lounge/Kitchen/ Dining	4510 x 4375*mm 14'10" x 14'4"*
Bedroom 1	3900 x 4040*mm 12'10" x 13'3"*
Ensuite	1150 x 2200mm 3'9" x 7'3"
Bedroom 2	3200 x 2500mm 10'6" x 8'2"
Bathroom	2230 x 1900mm 7'4" x 6'3"



Apartment 11

Room	Size
Lounge/Kitchen/ Dining	4930 x 3210mm 16'2" x 10'6"
Bedroom 1	3770 x 2895mm 12'4" x 9'6"
Ensuite	1870 x 1840mm 6'2" x 6'0"
Bedroom 2	3050 x 2650mm 10'0" x 8'8"
Bathroom	2375 x 1650mm 7'10" x 5'5"

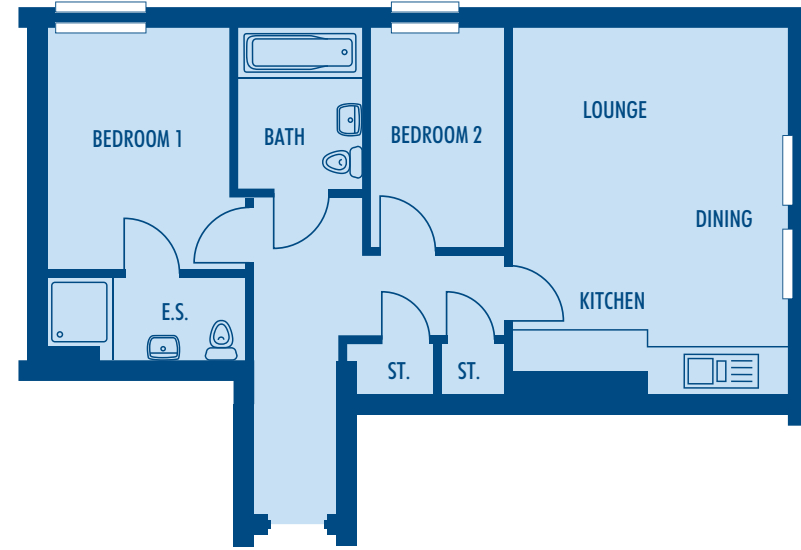


*Denotes maximum room dimensions. Room sizes are approximate. Kitchen and bathroom layouts are indicative. These plans are correct at time of going to press, but may be subject to change during construction. Please ensure that you check for specific plot details.



Apartment 12

Room	Size
Lounge/Kitchen/ Dining	5680 x 3680mm 18'8" x 12'1"
Bedroom 1	2355 x 4570mm 7'9" x 15'0"
Ensuite	2570 x 1310mm 8'5" x 4'4"
Bedroom 2	3575 x 2060mm 11'9" x 6'9"
Bathroom	1880 x 2050mm 6'2" x 6'9"



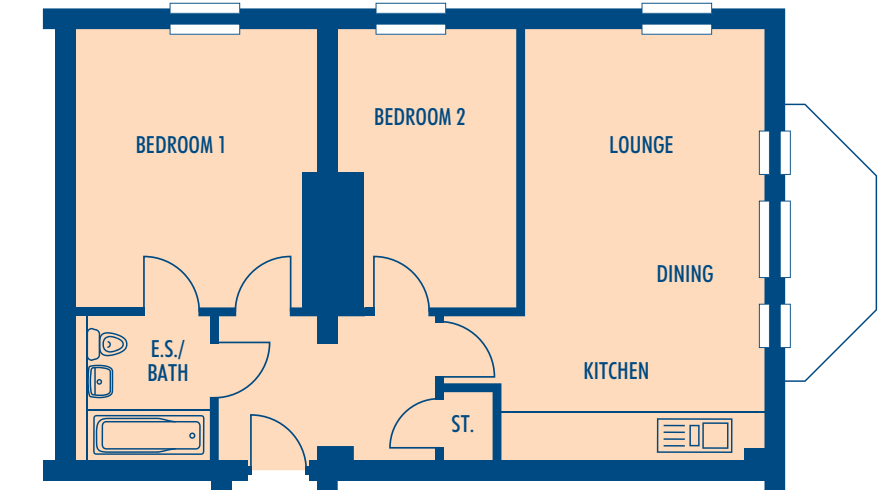
Apartment 14

Room	Size
Lounge/Kitchen/ Dining	3710 x 4970mm 12'2" x 16'4"
Bedroom 1	2600 x 3170mm 8'6" x 10'5"
Ensuite	2870 x 1200mm 9'5" x 3'11"
Bedroom 2	1890 x 2875mm 6'2" x 9'5"
Bathroom	1760 x 2070mm 5'9" x 6'9"



Apartment 15

Room	Size
Lounge/Kitchen/ Dining	5815 x 5300mm 19'1" x 17'5"
Bedroom 1	3715 x 2880*mm 12'2" x 9'5"*
Bath/Ensuite	2175 x 1800mm 7'2" x 6'2"
Bedroom 2	4635 x 2570mm 15'2" x 8'5"



Apartment 16

Room	Size
Lounge/Kitchen/ Dining	5900 x 3725mm 19'4" x 12'3"
Bedroom 1	3700 x 3425mm 12'2" x 11'3"
Bath/Ensuite	2005 x 1825mm 6'7" x 6'0"
Bedroom 2	3800 x 2515mm 12'6" x 8'3"

*Denotes maximum room dimensions. Room sizes are approximate. Kitchen and bathroom layouts are indicative. These plans are correct at time of going to press, but may be subject to change during construction. Please ensure that you check for specific plot details.





Apartment 17

Room	Size	
Lounge/Kitchen/ Dining	4910 x 3210mm	16'1" x 10'6"
Bedroom 1	2515 x 3630mm	8'3" x 11'11"
Ensuite	1150 x 2205mm	3'9" x 7'3"
Bedroom 2	3205 x 2500mm	10'6" x 8'2"
Bathroom	2235 x 2005mm	7'4" x 6'7"



Apartment 18

Room	Size	
Lounge/Kitchen/ Dining	4950 x 3210mm	16'3" x 10'6"
Bedroom 1	3755 x 2765mm	12'4" x 9'1"
Ensuite	1870 x 1690mm	6'2" x 5'7"
Bedroom 2	3070 x 2650mm	10'1" x 8'8"
Bathroom	2375 x 1650mm	7'10" x 5'5"



07483 175 386 | morrishomes.co.uk

