

NEW
INSTRUCTION



£92,500

***NO CHAIN* *THREE BEDROOMS* *GUEST TOILET & MAIN BATHROOM* *FIRST TIME BUYERS/INVESTORS/LANDLORDS*
GARDEN & PARKING *CLOSE TO LOCAL AMENITIES***

Townend Estate Agents off for sale this THREE BEDROOM semi-detached property. Located in a popular residential area, close to a range of local schools and amenities. Ideal for investors, first time buyers and landlords alike. With landlords expecting a rental income of between £550-600pcm, don't miss this opportunity to purchase this one! Benefiting from gas central heating, UPVC double glazing, garden and parking to the front.

The property comprises briefly: Entrance, Lounge, Kitchen, Cloaks W/C. Upstairs are THREE bedrooms and the house bathroom. Externally is a good sized, enclosed garden to the rear, garden shed as well as off street parking to the front.

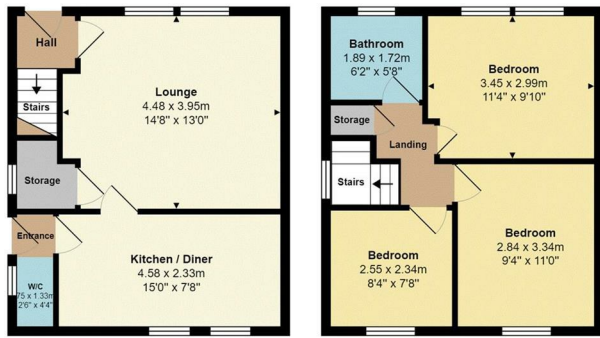
Ask us about...

AUCTION

CONVEYANCING

MORTGAGES

SURVEYS



Ground Floor
Approx. Area: 34.9 m² ... 375 ft²

First Floor
Approx. Area: 34.9 m² ... 375 ft²

Approx. Total Area: 69.8 m² ... 751 ft²

Whilst every effort is taken to ensure accuracy of the floor plans, measurements are approximate and for illustration purposes only.



These particulars do not form part of any contract and no statements are made without any responsibility on the part of their clients. Applicants must investigate for themselves that statements are correct and no agent whether the partner or employee has the authority to make any representation or warranty whatsoever in respect of this property.
IMPORTANT NOTICE: WHILST WE ENDEAVOUR TO MAKE OUR SALES DETAILS ACCURATE AND RELIABLE, THEY SHOULD NOT BE RELIED ON AS STATEMENTS OR REPRESENTATIONS OF FACT AND DO NOT IN ANY WAY CONSTITUTE A CONTRACT.
 PROSPECTIVE PURCHASERS SHOULD SATISFY THEMSELVES THAT DIMENSIONS ARE CORRECT AND THAT MAINS SERVICES ARE OPERATIONAL.

Energy Efficiency Rating		Environmental Impact (CO ₂) Rating	
Current	Potential	Current	Potential
England & Wales <small>EU Directive 2002/91/EC</small>		England & Wales <small>EU Directive 2002/91/EC</small>	