



**Guide price £950,000**

## Epsom

\*\*\* LAUNCH DAY SATURDAY 17th OCTOBER, CALL NOW FOR MORE DETAILS \*\*\* Windsor Gardens is an exciting new gated development of just four homes that is located within a stones throw of the High Street and Epsom railway station which is just 0.4 of a mile away. With incredible attention to detail and truly impressive open plan ground floor, the property enjoys accommodation totalling over 1945 Sq Ft.

Having been created to encompass a contemporary design along with comfortable accommodation and a truly practical position, the level of finish is meticulous and the layout is highlighted by stylish design touches and huge amounts of natural light throughout the entire house and the added benefit of a directly South facing garden.

In our view this fine property provides the ultimate layout for a contemporary and practical town

### Epsom Office

2 West Street  
Epsom, Surrey  
KT18 7RG

T: 01372 745 850

### Ewell Office

220 Chessington Road  
West Ewell, Surrey  
KT19 9XA

T: 020 8394 1234

### Stoneleigh Office

62 Stoneleigh Broadway  
Stoneleigh, Surrey  
KT17 2HS

T: 020 8393 9411

### Banstead Office

141 High Street  
Banstead, Surrey  
SM7 2NS

T: 01737 333699

### Lettings & Management

163 High Street  
Epsom, Surrey  
KT19 8EW

T: 01372 726 666

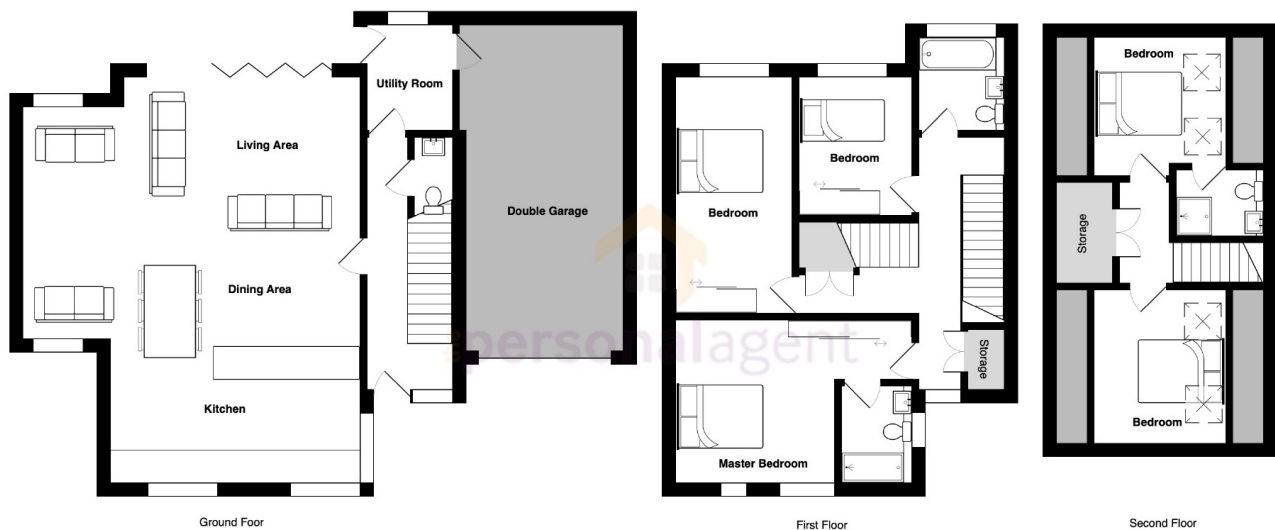


## ENERGY EFFICIENCY RATING & ENVIRONMENTAL IMPACT RATING

### FREE VALUATION

Due to our successful sales team we require properties for waiting buyers. For a personal approach to selling your home please do not hesitate to contact us.

### FLOOR PLANS



Windsor Gardens, Epsom  
Total Area: 180.8 m<sup>2</sup> ... 1946 ft<sup>2</sup>  
FOR ILLUSTRATIVE PURPOSES ONLY.

Whilst every attempt has been made to ensure the accuracy of the floor plan shown, all measurements, positioning, fixtures, features, fittings and any other data shown are an approximate interpretation for illustrative purposes only and are not to scale.

No responsibility is taken for any error, omission, miss-statement or use of data shown.

The above statement applies to both 'Still Moving London LTD' and the Company or individual displaying this floor plan.

Unauthorised reproduction prohibited.

© Still Moving London LTD ([www.stillmoving.london](http://www.stillmoving.london))





Site Plan

















