



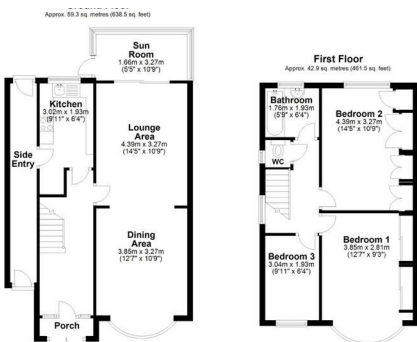
27 New Coventry Road

Sheldon, Birmingham, B26 3BA

£950



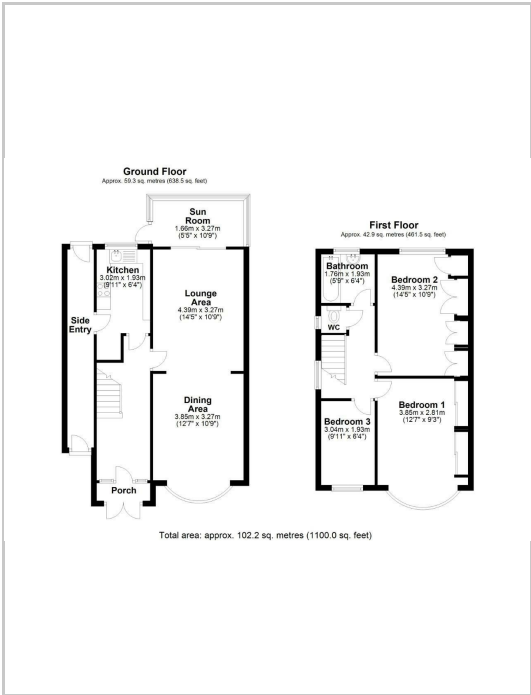
Senate Property Services are pleased to offer this fully refurbished three bedroom semi detached property with rear garage. Located close to local amenities and with M42 motorway link close by. Benefiting from double glazing, gas central heating and comprising of enclosed entrance porch, entrance hallway with staircase to first floor, through lounge/diner with access into rear sun room, sun room with access to rear garden, refitted kitchen with appliances and access to enclosed side entry, side entry with access to front of property and access to rear garden, maintenance free rear garden with access into rear garage and gated access to rear of property, three bedrooms to first floor, refitted bathroom with shower bath and separate toilet.



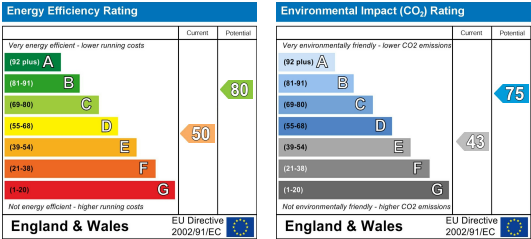
Area Map



Floor Plan



Energy Efficiency Graph



These particulars, whilst believed to be accurate are set out as a general outline only for guidance and do not constitute any part of an offer or contract. Intending purchasers should not rely on them as statements of representation of fact, but must satisfy themselves by inspection or otherwise as to their accuracy. No person in this firms employment has the authority to make or give any representation or warranty in respect of the property.