



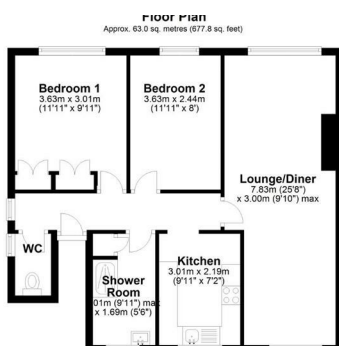
12 Featherstone Close

Shirley, Solihull, B90 3RL

£725



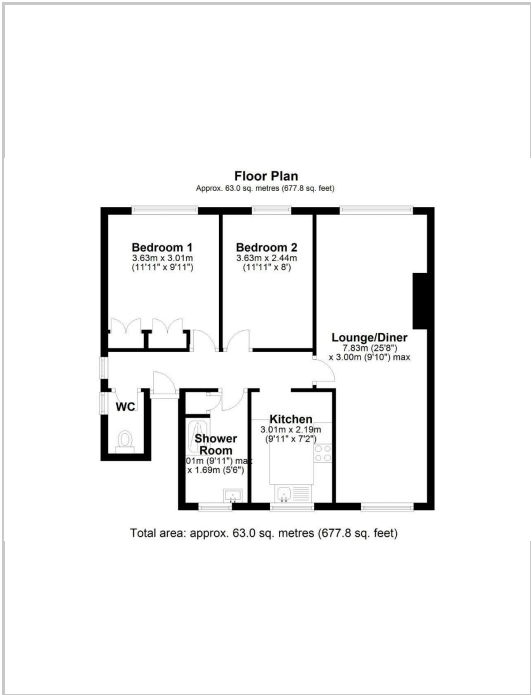
Senate Property Services are pleased to offer this two bedroom first floor maisonette with rear garden. Located within a Cul-de-Sac close to local amenities and with M42 motorway link close. Benefiting from double glazing, gas central heating and comprising of canopy porch, entrance hallway with staircase to first floor, lounge/diner with feature fireplace, fitted kitchen, fitted shower room with separate toilet.



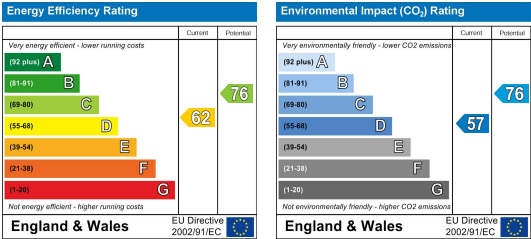
Area Map



Floor Plan



Energy Efficiency Graph



These particulars, whilst believed to be accurate are set out as a general outline only for guidance and do not constitute any part of an offer or contract. Intending purchasers should not rely on them as statements of representation of fact, but must satisfy themselves by inspection or otherwise as to their accuracy. No person in this firms employment has the authority to make or give any representation or warranty in respect of the property.