



Heathfield Gardens, London, W4 4JU

Offers In Excess Of £1,750,000

WHITMAN & CO.

SALES · LETTINGS · COMMERCIAL

- Two off-street parking spaces
- Garden office
- Stunning kitchen/family room

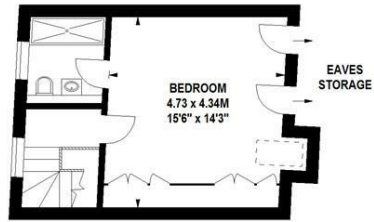
- Landscaped open aspect garden
- Wide tree-lined residential street
- Fantastic proportions

Tenure - Freehold
Local Authority - Hounslow
Council Tax - Band H

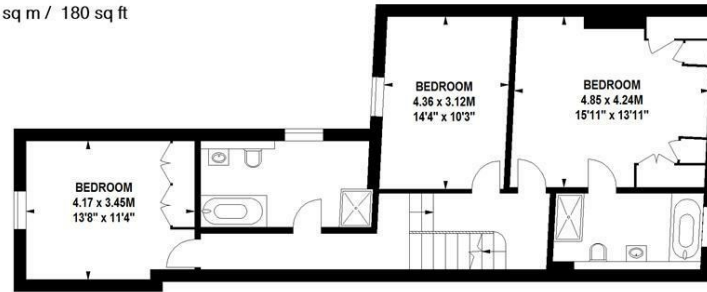
THE PROPERTY

An exceptional 2449sqft semi-detached period family home with fantastic proportions located on this wide tree-lined street running south off Turnham Green. Presented in excellent order throughout the accommodation comprises wide entrance hall, 23' reception room with bay window, fabulous kitchen/dining/family room leading onto the garden, large open aspect garden with bespoke garden studio and storage, utility room, cloakroom, master bedroom with luxury ensuite bathroom, three further double bedrooms (one ensuite), generous family bathroom with separate walk-in shower, extensive built-in storage throughout and two off-street parking spaces. The house is very well located for Chiswick High Road's extensive facilities. Transport links include Chiswick Park and Gunnersbury Stations, local bus routes and easy access to the A4/M4 for routes in and out of London.

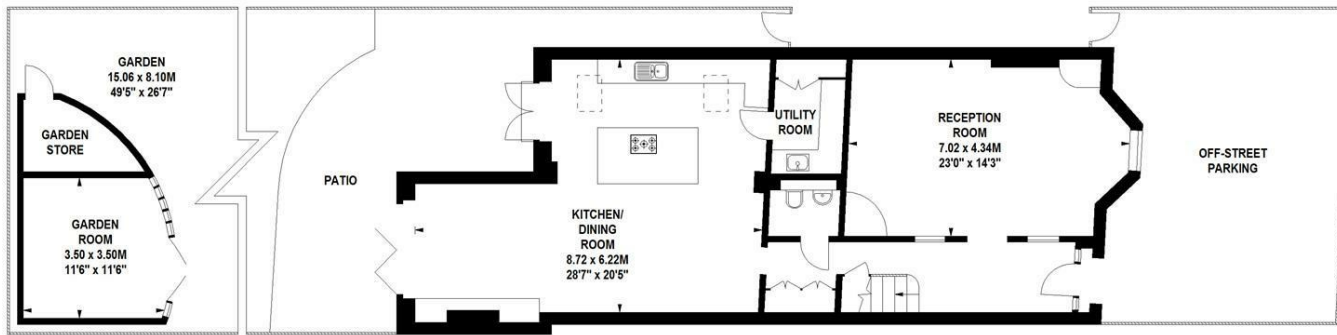
Heathfield Gardens, W4
Approximate gross internal area
227.51 sq m / 2449 sq ft
(Including Garden Room & Garden Store)
Garden Room & Garden Store
16.72 sq m / 180 sq ft



First Floor



Second Floor



Ground Floor

Not to scale, for guidance only and must not be relied upon as a statement of fact.
All measurements and areas are approximate only

SITUATION



5-7 Turnham Green Terrace, Chiswick, London, W4 1RG

Tel 020 8747 8300

E-mail sales@whitmanandco.com

Website www.whitmanandco.com



MISREPRESENTATION ACT 1967

Whitman & Co. for themselves and for the vendors give notice that these particulars do not constitute any part of, an offer of contract. All statements contained in these particulars are made without responsibility on the part of Whitman & Co. or the vendor. None of the statements contained in these particulars is to be relied upon as statements or representations of facts. Any intending purchaser must satisfy himself by inspection or otherwise as to the correctness of each of the statements contained in these particulars. The vendor does not make or give, and neither Whitman & Co. or any person in their employment has any authority to make or give, any representation or warranty whatever in relation to the property.