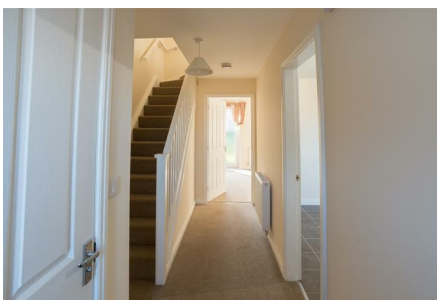


Topaz Crescent, Sutton-In-Ashfield, NG17 1NX



£725 PCM



Belvoir are proud to present a brand new 3 bedroom detached property, with large garden, in Sutton-in-Ashfield.

Downstairs is a large living area with French patio doors opening onto a large, enclosed garden. The well-sized kitchen-diner includes an integrated oven and hob.

Leading upstairs are three bedrooms, two doubles and one single, plus family bathroom complete with three-piece white suite and over bath mixer shower.

There is a driveway with space for 2 cars plus street parking.

This development by Jelson Homes lies off the A38 trunk road with direct access to the M1 motorway, providing access to both North and South.

The town centres of both Sutton and Kirkby in Ashfield are close by, together with the East Midlands designer outlet along the A38 and next to junction 28 of the M1. This property would make a lovely family home to those interested.

Tenants Information

At the beginning of your tenancy there will be the following costs you will need to consider:

Holding deposit: Equal to 1 weeks rent
Dilapidation deposit Equal to 5 weeks rent

The following costs may also be incurred where applicable:

Tenancies with Pets charged at an increased rent of 6%
Late rent is charged @ £ 3% above the bank of England base rate of inflation (inc. VAT)
Key replacement £ 50.00 (inc. VAT)
Changes to contracts £ 50.00 (inc. VAT)
Change of sharer £ 75.00 (inc. VAT)
Permitted occupier £ 75.00 (inc. VAT)
Surrender of Tenancy £418.80 (inc. VAT)

Tenant Protection

We are a member of NALS & Safe Agent, which is a client money protection scheme, and also a member of The Property Ombudsman, which is a redress scheme. You can find out more details on our website or by contacting us directly."

