

TATES

Residential Sales & Lettings



Colet Gardens, St Pauls Court, London W14 9DN £530 Per week

- Four bedrooms
- Gated development
- Private garden
- Close to Barons Court & Hammersmith tube station
- Two bathrooms
- Heating and hot water included
- Communal gardens
- Energy Efficiency Rating Current Band: D

Colet Gardens, W14

Approximate gross internal area
1,080 sq ft / 100.33 sq m

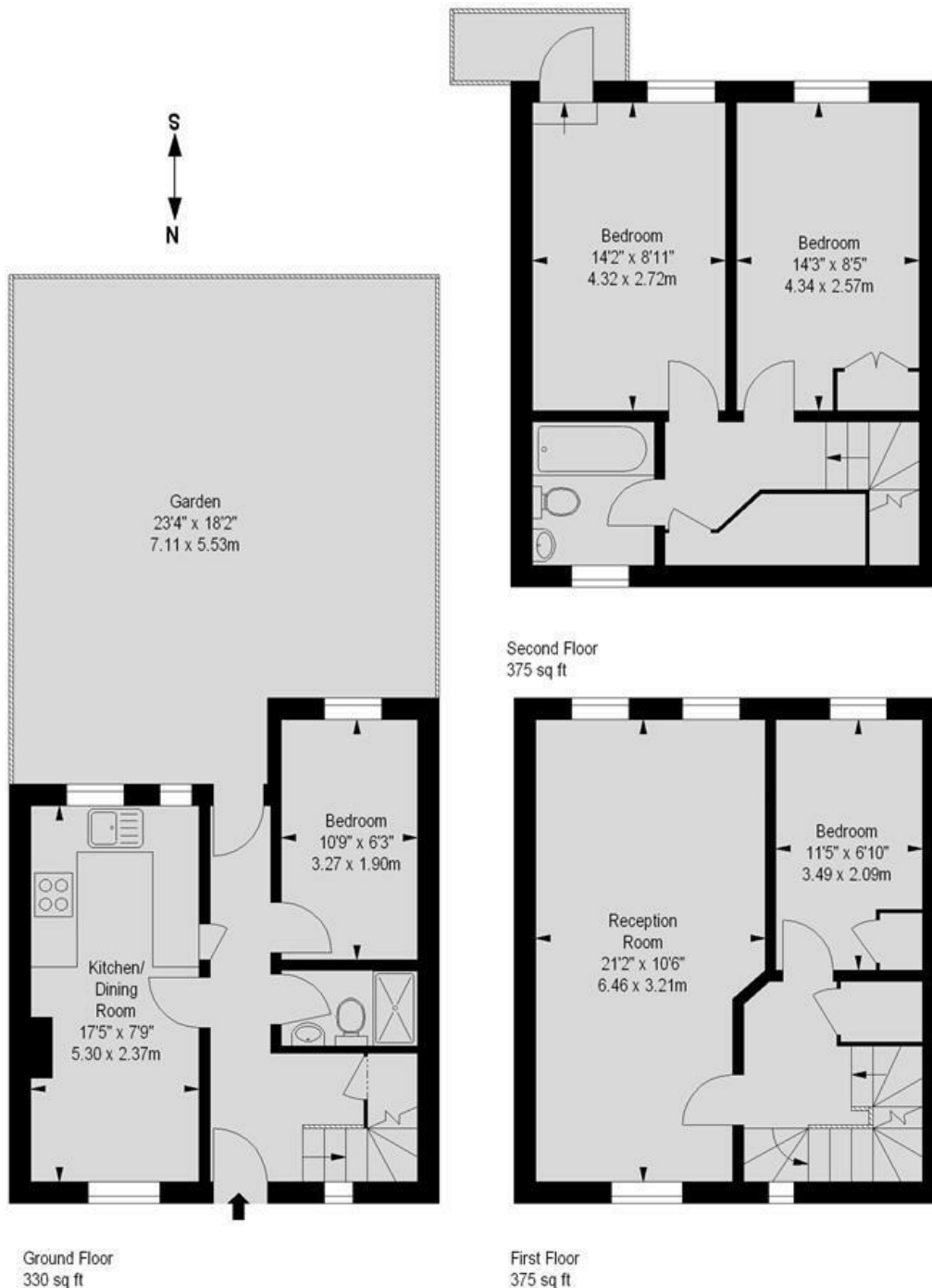


Illustration For Identification Purposes Only. Not To Scale
*Floorplan Drawn According To RICS Guidelines

Whilst these particulars are believed to be correct, no guarantee can be given for the measurements, appliances or services. It is our recommendation that all are tested. These are not intended to form part of any contract. Tate's accept no responsibility for their accuracy.

135 Hammersmith Rd London W14 0QL.
T. 020 7602 6020 F. 020 7602 9522
mail@tatesestates.co.uk
tatesestates.co.uk

Tates (Agents) Ltd. Registered in England and Wales No. 2356337
Registered Office: 4th Floor Imperial House, 15 Kingsway London WC2B 6U

Energy Efficiency Rating		Current	Potential
Very energy efficient - lower running costs			
(92 plus) A			84
(81-91) B			
(69-80) C		65	
(55-68) D			
(39-54) E			
(21-38) F			
(1-20) G			
Not energy efficient - higher running costs			
England & Wales		EU Directive 2002/91/EC	

