



Jordanfishwick

WEST DIDSBURY
Georgia Avenue



**Georgia Avenue, West
Didsbury M20 1LY**
Offers in excess of £200,000



The Property

**** SEE VIDEO TOUR **** A stylish, two DOUBLE BEDROOM, ground floor apartment forming part of a POPULAR purpose built development with a GREAT LOCATION in West Didsbury, which is just a 'short stroll' from the METROLINK and array of bars and restaurants off Burton Road. 716 sq ft. The apartment is thoughtfully laid out with a generous hallway, spacious open plan living kitchen area which extends over 21 ft with a range of fitted kitchen units, two double bedrooms with built-in wardrobes to both and a spacious bathroom with modern four piece white suite. The bedrooms and bathroom are accessed from an inner hallway which also gives access to a large storage cupboard. There is an allocated parking space to the front of the development.

Directions

From our office proceed along Wilmslow Road in a northerly direction passing through the Barlow Moor Road traffic lights. At the next set of traffic lights turn left into Lapwing Lane. Proceed along Lapwing Lane crossing over Palatine Road and enter fashionable West Didsbury. At the junction with the Metropolitan Bar and Restaurant, cross straight over into Cavendish Road and turn left at the mini roundabout into The Boulevard. Georgia Avenue is then on the left hand side.

- Stylish apartment
- Two double bedrooms
- Open plan living space over 21ft
- Spacious bathroom
- Allocated parking
- West Didsbury location
- Close to Burton Rd & Metrolink
- uPVC double glazing
- Ground floor position
- Ready to move into

Postcode - M20 1LY

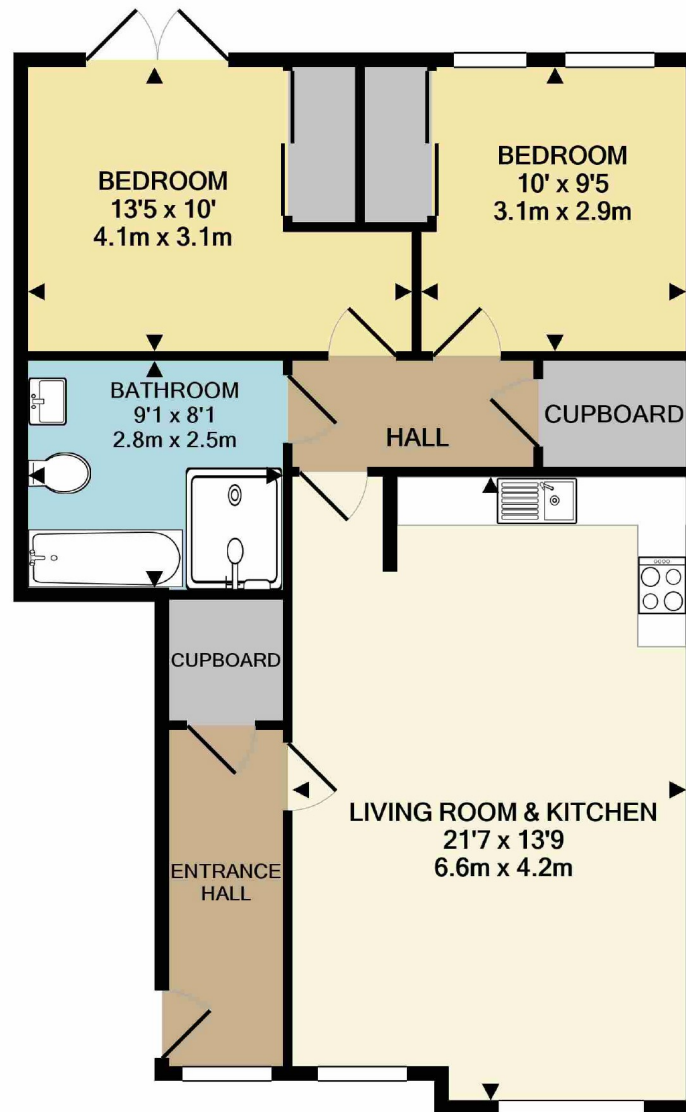
EPC Rating - C

Floor Area - 716 sq ft

Local Authority - Manchester City Council

Council Tax - Band D





TOTAL APPROX. FLOOR AREA 716 SQ.FT. (66.5 SQ.M.)
 Measurements are approximate. Not to scale. Illustrative purposes only
 Made with Metropix ©2020



These particulars are believed to be accurate but they are not guaranteed and do not form a contract. Neither Jordan Fishwick nor the vendor or lessor accept any responsibility in respect of these particulars, which are not intended to be statements or representations of fact and any intending purchaser or lessee must satisfy himself by inspection or otherwise as to the correctness of each of the statements contained in these particulars. Any floorplans on this brochure are for illustrative purposes only and are not necessarily to scale.

Offices also at: Wilmslow, Macclesfield, Hale, Sale, Chorlton, Glossop, Manchester & Salford

757-759 Wilmslow Road, Didsbury Village, Manchester

0161 445 4480

didsbury@jordanfishwick.co.uk
 www.jordanfishwick.co.uk