



# Beautifully refurbished four bedroom town house

Upper Montagu Street, Marylebone, W1  
£2,600 per week | Available Immediately





# Upper Montagu Street Marylebone, W1

*This stunning house offers stylish and spacious accommodation on a quiet road in Marylebone.*

*Arranged over 5 floors the layout offers decent entertaining space along with impressive bedrooms, 2 of which have en suites and dressing areas.*

*Upper Montagu Street is a quiet residential road situated within close proximity of Marylebone station and a short walk to the restaurants and bars in Marylebone as well as being near Regent's Park.*

*Double Reception Room  
Kitchen & open plan Dining Room  
4 Bedrooms (2 en suite) | Patio  
Garden Furnished or Unfurnished  
City of Westminster Council Tax  
band G*



4  
Bed Townhouse



4  
Bathrooms



Available  
Immediately



£2,600  
per week







Upper Montagu Street, W1

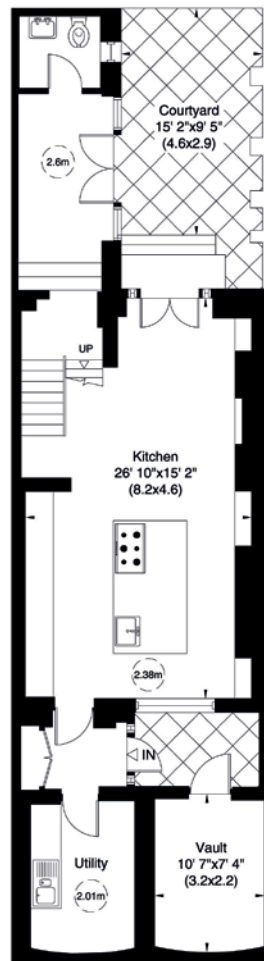
Gross internal area (approx.)

218 Sq m (2350 Sq ft) Including Vault

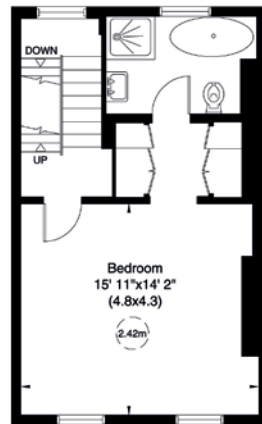
210 Sq m (2258 Sq ft) Excluding Vault & Under 1.5m

For identification only, Not to Scale

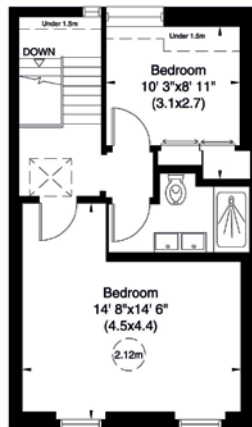
capital 020 8871 7722



Lower Ground Floor



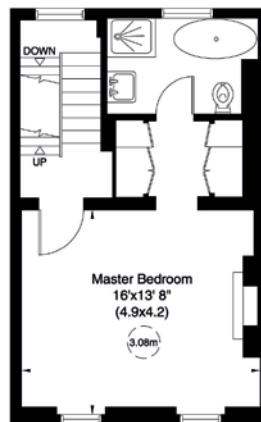
Second Floor



Third Floor

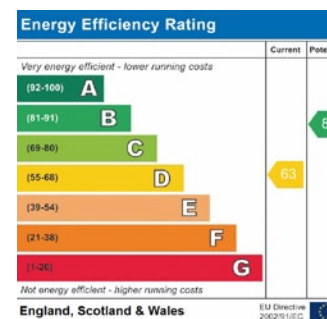


Ground Floor



First Floor

Not to scale, for guidance only and must not be relied upon as a statement of fact. All measurements and areas are approximate only (and have been prepared in accordance with the current edition of the RICS Code of Measuring Practice).



LORNHAM  
London

**Dominic Wertheimer**  
dwertheimer@lornham.com

**Lornham**  
7 New Quebec Street,  
London W1H 7RH  
+44 (0) 20 7724 4777