

moores
estateagents.com



Cross Lane, Burton Lazars

Melton Mowbray, LE14 2UH

Four Bedrooms, Detached House

Guide Price £499,950 | For Sale



Cross Lane, Burton Lazars

Melton Mowbray, LE14 2UH

Four Bedrooms, Detached House

Guide Price £499,950 | For Sale

Features

Detached Property

Four Bedrooms

Two Bathrooms

Flexible Living Accommodation

Recently Refurbished

Open Views To The Rear

Double Garage

Village Location

Recently refurbished four bedroom detached home, located on the edge of this well thought of village with far reaching open views to the rear.

The accommodation briefly comprises of a large entrance hall, ground floor shower room, spacious living room with fireplace, refitted kitchen/dining room with a range of wall and base units, integrated appliances and French doors leading out to the rear garden, plus two ground floor bedrooms. At first floor level, the landing leads to two further double bedrooms and a three piece suite family bathroom.

Outside, the property offers an extended driveway providing off road parking, a good sized garden to the front of the property and a large garden to the rear with outstanding open views over rolling countryside, patio area, garden shed and an electrically operated double garage.

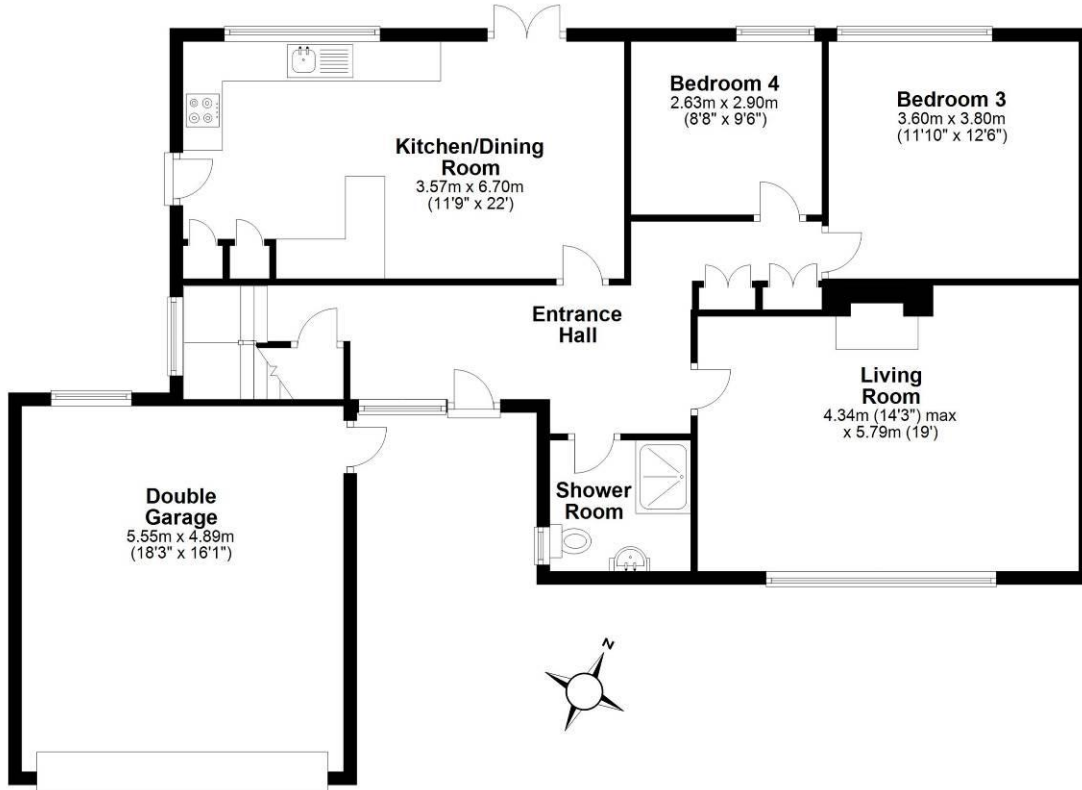
Burton Lazars is surrounded by beautiful rolling countryside whilst being set just over a mile away from Melton Mowbray with its great range of amenities. This home also enjoys good commuter links to Leicester, Market Harborough and Oakham, where you can catch the train to London's Kings Cross as well as links to include the A1.

Viewing is highly recommended.



Ground Floor

Approx. 122.1 sq. metres (1314.6 sq. feet)

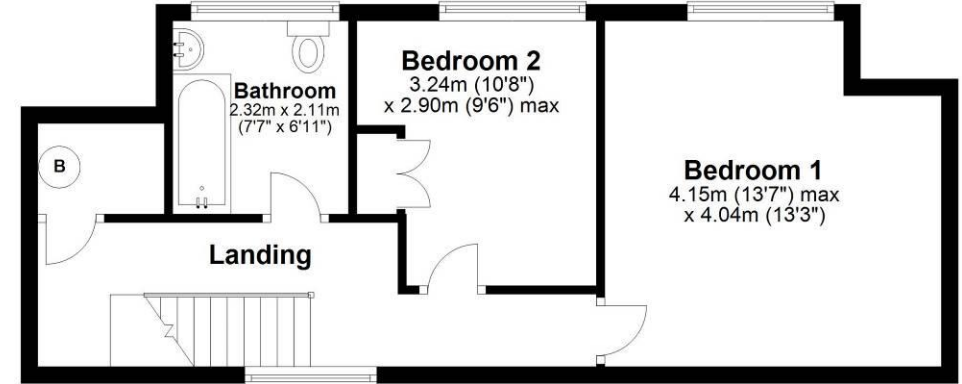


Total area: approx. 164.2 sq. metres (1767.9 sq. feet)

This floor plan is not to scale. They are for guidance only and accuracy is not guaranteed. Plan was produced by ADR Energy Assessors
Plan produced using PlanUp.

First Floor

Approx. 42.1 sq. metres (453.3 sq. feet)



Re-locating buyers with
Douglas & Gordon 
having 14 offices across London

Moore V Ltd trading as Moores Estate Agents gives notice that: 1. These particulars do not constitute an offer or contract or part thereof. 2. All descriptions, photographs and plans are for guidance only and should not be relied upon as statements or representations of fact. All measurements are approximate and not necessarily to scale. Any prospective purchaser must satisfy themselves of the correctness of the information within the particulars by inspection or otherwise. 3. Moore V Ltd trading as Moores Estate Agents does not have any authority to give any representations or warranties whatsoever in relation to this property (including but not limited to planning/building regulations), nor can it enter into any contract on behalf of the Vendor. 4. Moore V Ltd trading as Moores Estate Agents does not accept responsibility for any expenses incurred by prospective purchasers in inspecting properties which have been sold, let or withdrawn. 5. If there is anything of particular importance to you, please contact this office and we will try to have the information checked for you.

25 Burton Street,
Melton Mowbray
01664 491610

36 High Street,
Oakham
01572 757979

2 Orange Street,
Uppingham
01572 821935

1 Sheep Market,
Stamford
01780 484555

London Platfor m,
Peter borough Station
01733 788888

London Platfor m,
Grantham Station
01476 855618

Follow us on...  Facebook  Twitter

